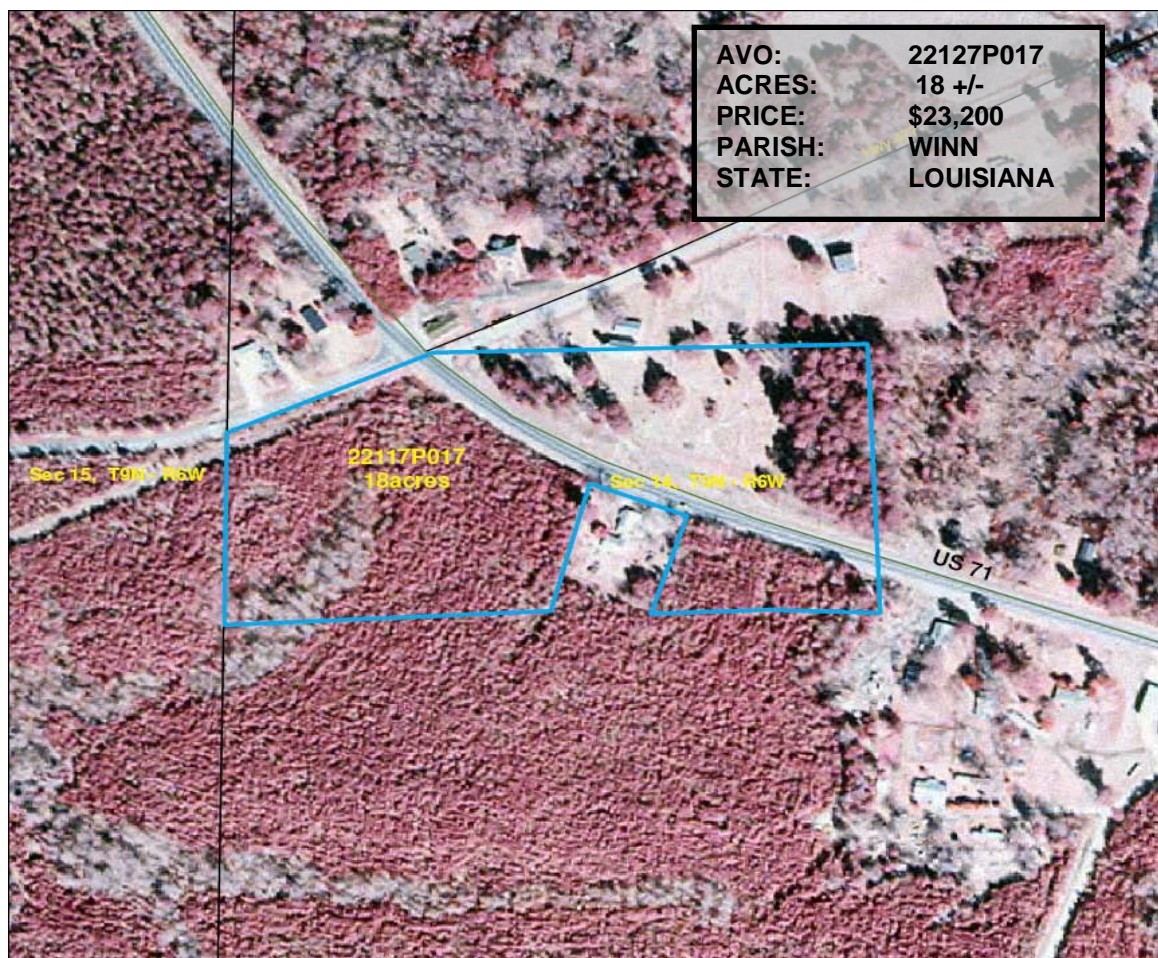


# ROCKLAND R. BURKS INC.



AVO: 22127P017  
ACRES: 18 +/-  
PRICE: \$23,200  
PARISH: WINN  
STATE: LOUISIANA

820 Hwy 2  
Sterlington, LA 71280  
Office: 318-665-0408  
Fax: 318-665-9299  
Cyndi@rrbland.com  
landwatch.com  
landsofamerica.com

0 195 390 780 Feet

Aerial Map

Parcel # 22127P017

Winn Parish, LA - approx 18 acres +/-

Asking \$23,200.00



ROCKLAND R. BURKS, INC.  
P.O. BOX 1212  
STERLINGTON LA 71280  
318.665.0408  
rocky@rrbland.com



## Land Description:

18 acres located in Winn parish at the intersection of Highway 71 and U.S. Highway 477. This tract is 15 miles east of Natchitoches, Louisiana in the town of Saint Maurice. The property is a great commercial location, and is adjacent to other small businesses. This tract would be great for a small business or housing development. Tract does offer convenient access with great road frontage and utilities are available. All minerals are reserved. Please contact for more information or maps on this property.

Call our Associate Broker/Arkansas Land  
Rep. Rocky Burks at:

(318-245-2699)

John Harkey

(318-614-1897)

Or visit [landwatch.com](http://landwatch.com) or

[landsofamerica.com](http://landsofamerica.com) for maps and  
additional information