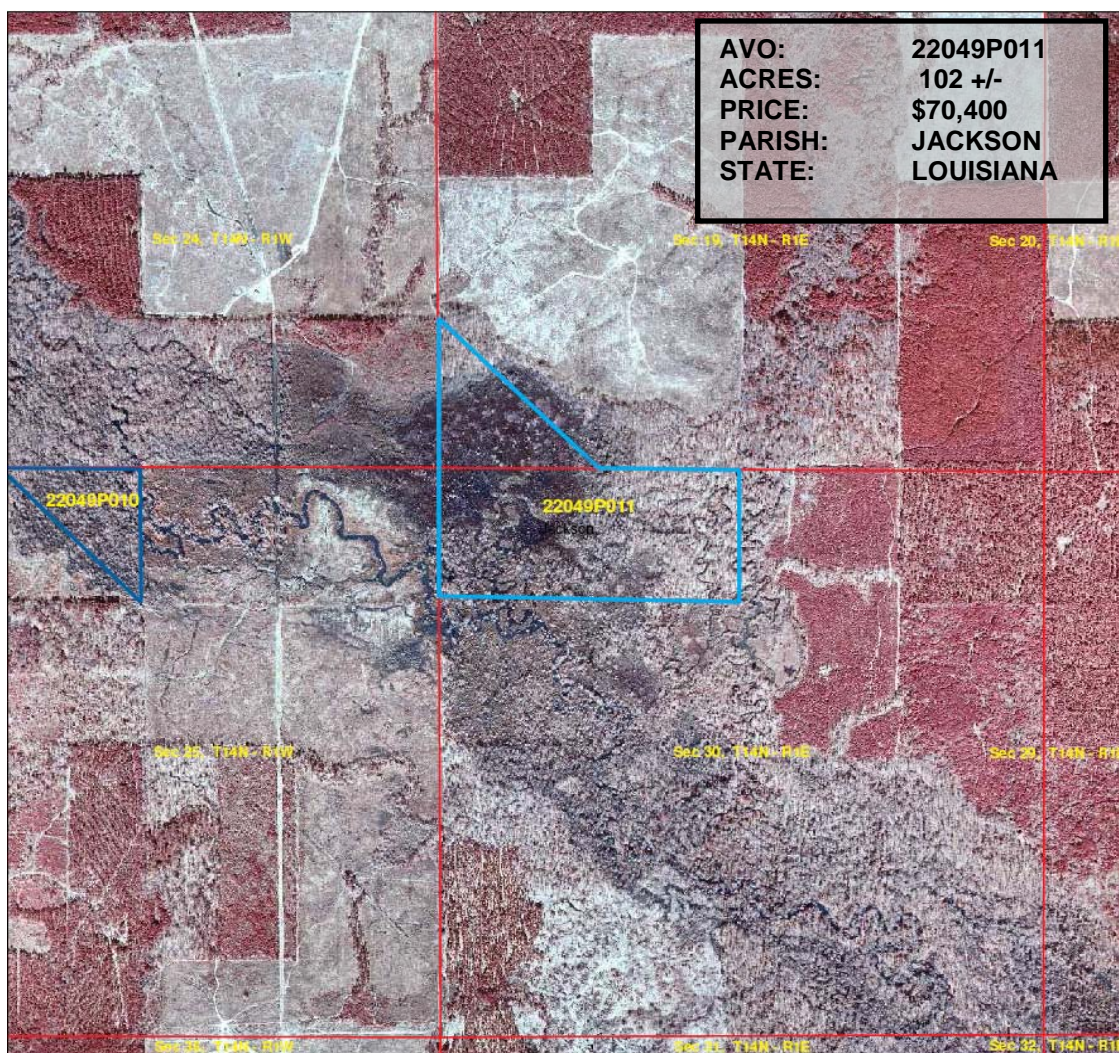


ROCKLAND R. BURKS INC.



Boundary Lines are Approx.

Aerial Map
Parcel # 22049P011
Jackson Parish, LA - approx. 102 acres +/-

0 650 1,300 2,600
Feet



820 Hwy 2
Sterlington, LA 71280
Office: 318-665-0408
Fax: 318-665-9299
Cyndi@rrbland.com
landwatch.com
landsofamerica.com

Land Description:

Great place for the deer and ducks. This 102 acre tract of bottomland is located south of Chatham, Louisiana in Jackson parish and just under 10 miles from the scenic Caney Creek Lake. Some of the timber on this tract was cut in the past, but all the remaining timber will provide seeding for future hardwood regeneration. The abundant underbrush and seasonal flooding makes it a perfect tract for deer and duck hunting. This tract is less than 4 miles from Hwy 499 and approximately 30 minutes South of Chatham. Access is across timber company land. All minerals are reserved. Please call if you would like to see this parcel.

Call our Associate Broker/Arkansas Land
Rep. Rocky Burks at:
(318-245-2699)
John Harkey
(318-614-1897)
Or visit landwatch.com or
landsofamerica.com for maps and
additional information