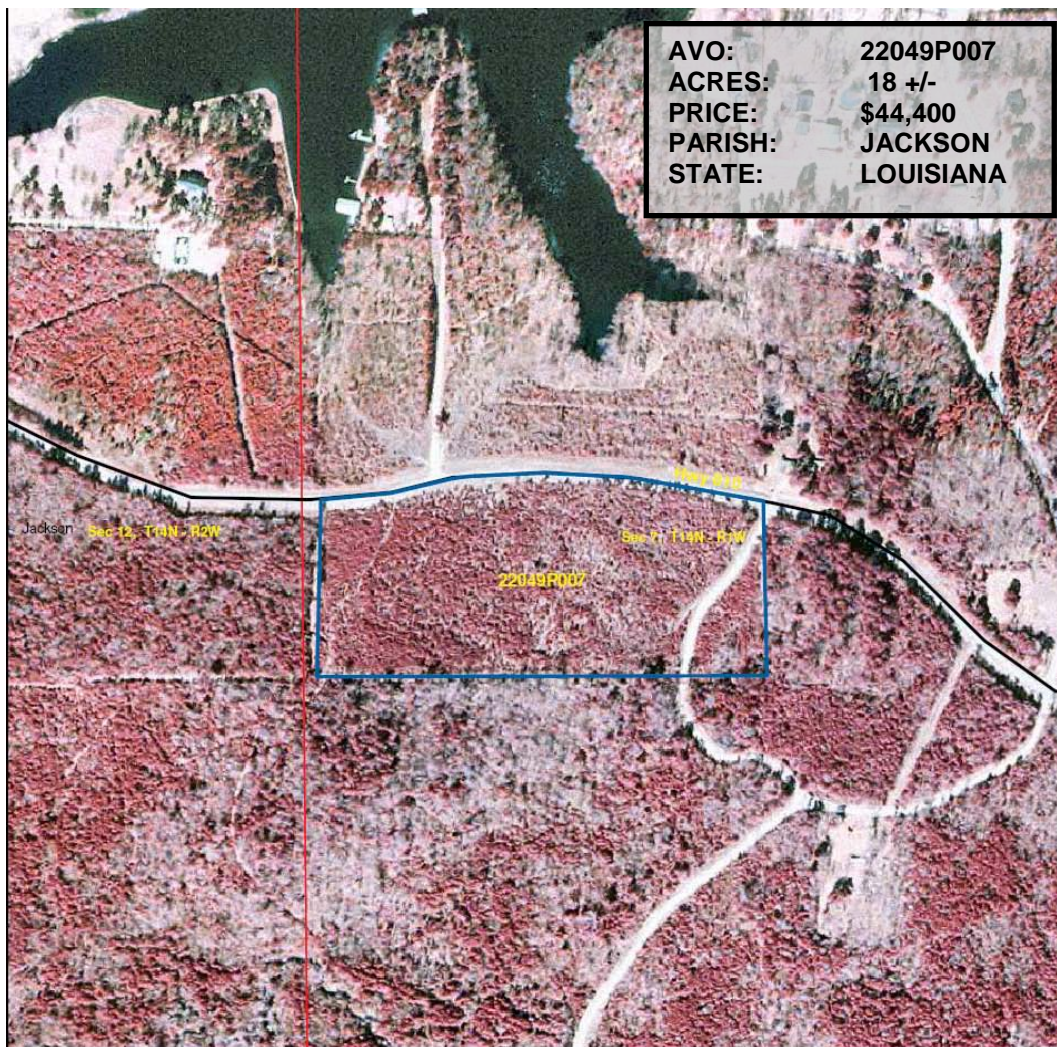


# ROCKLAND R. BURKS INC.



820 Hwy 2  
Sterlington, LA 71280  
Office: 318-665-0408  
Fax: 318-665-9299  
Cyndi@rrbland.com  
landwatch.com  
landsofamerica.com



Boundary Lines are Approx.

Aerial Map  
Parcel # 22049P007  
Jackson Parish, LA - approx. 18 acres +/-

0 200 400 800 Feet



## Land Description:

Just south of Chatham, Louisiana in Jackson Parish. 18 acres of pine timberland consisting of a 6-8 year old pine plantation. This tract borders LA Highway 810 on the southern side of the road for approximately 1/4 of a mile. Access is available with 500 feet of Hwy frontage and utilities available. The property has great residential potential and/or recreational opportunities, in addition to Caney Creek located under a mile away. The two cities of Monroe and Winnfield are under 30 minutes away. Please contact for additional information.

Call our Associate Broker/Arkansas Land  
Rep. Rocky Burks at:  
(318-245-2699)  
**John Harkey**  
(318-614-1897)  
Or visit [landwatch.com](http://landwatch.com) or  
[landsofamerica.com](http://landsofamerica.com) for maps and  
additional information.