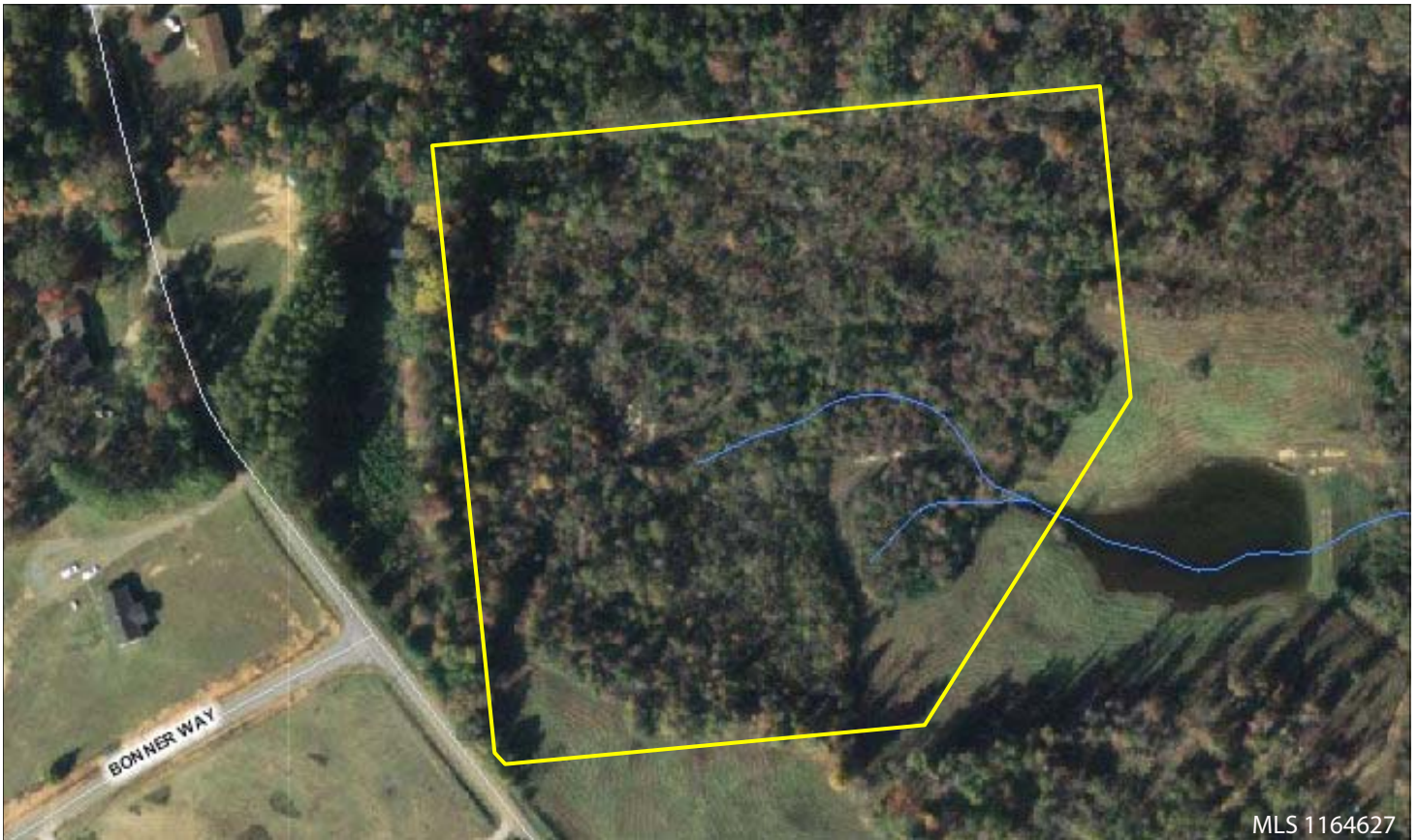


9± ACRES

RESIDENTIAL DEVELOPMENT OPPORTUNITY



Property outline is approximate. Exact boundaries to be determined by Purchaser's survey and Seller's discretion.

Finley Road, Belton, Greenville County, SC

This property features a mix of hardwoods and pines and easy access to Highway 25. This nine-acre tract will be cut from a 10-acre tax parcel and the resultant parcel will not have pond access. Adjacent acreage on Finley Road is available for a total of 103± contiguous acres with an additional 13.8± acres that may be available; see reverse for map.

- Within 30 minutes of downtown Greenville
- Schools are Ellen Woodside, Ralph Chandler, & Woodmont High
- Well and septic necessary; no zoning

\$7,500 per acre

Contact Scott Cornelson or Pat McNamara for more information.

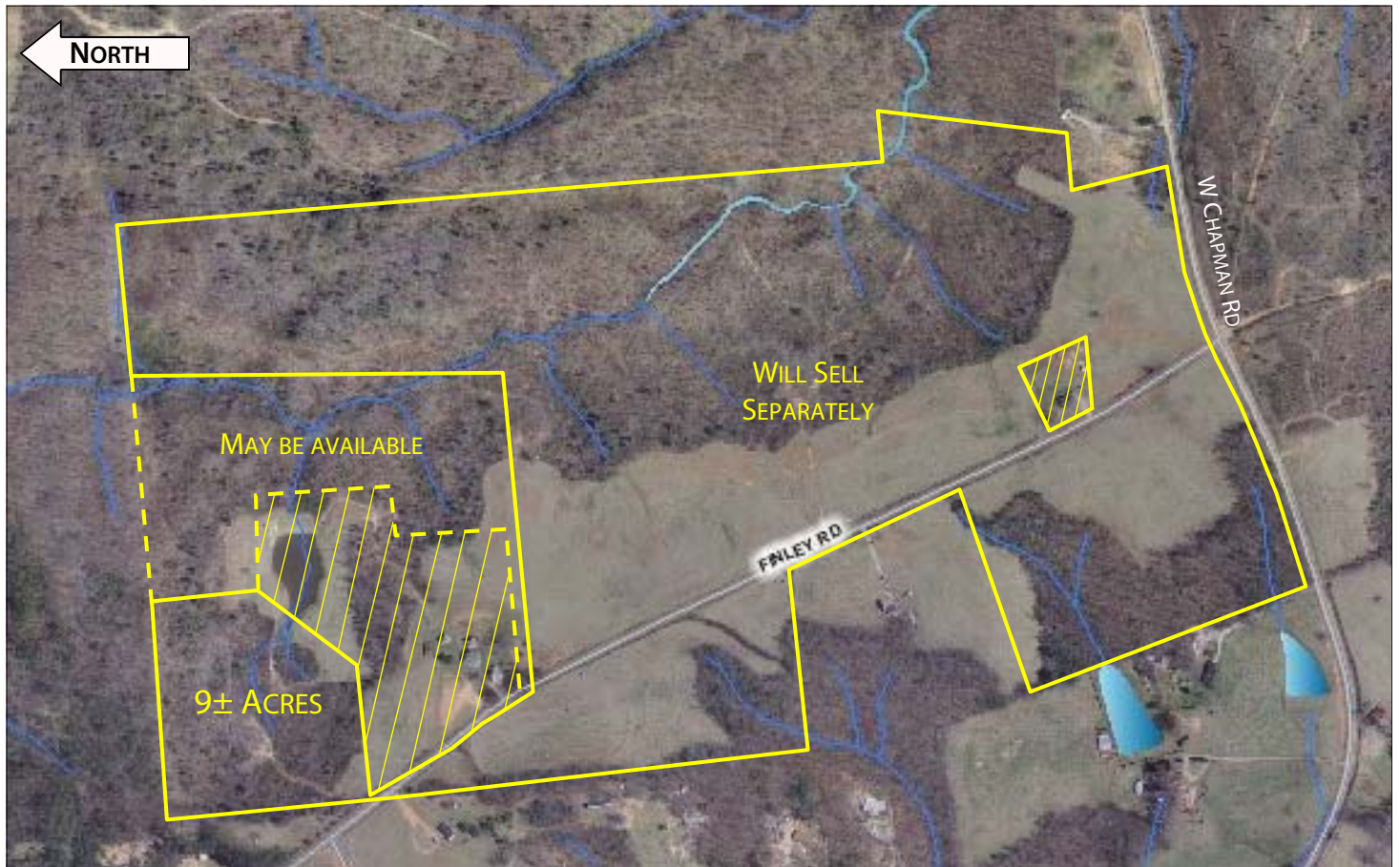
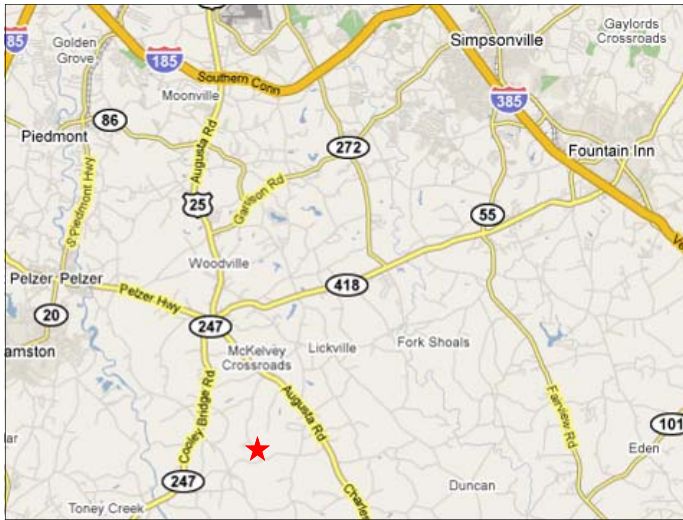
CAROLINA
LAND COMPANY
THE LAND BROKERS

PO BOX 787
GREENVILLE, SC 29602

WWW.CAROLINALANDCOMPANY.COM

PHONE: 864-232-6922
FAX: 864-271-0370

No warranty or representation, expressed or implied, is made regarding the accuracy of the information contained herein, and it is submitted subject to errors, omissions, change of price, withdrawal without notice, and to any other special listing conditions imposed by our principals.



Assemblage of available properties totaling approximately 103 acres. An additional 13.8± acres may also be available. The complete offering features 2,900'+ of Finley Road frontage, open pasture, and Chapman Creek access. Property lines shown are approximate and not intended to represent legal boundaries.