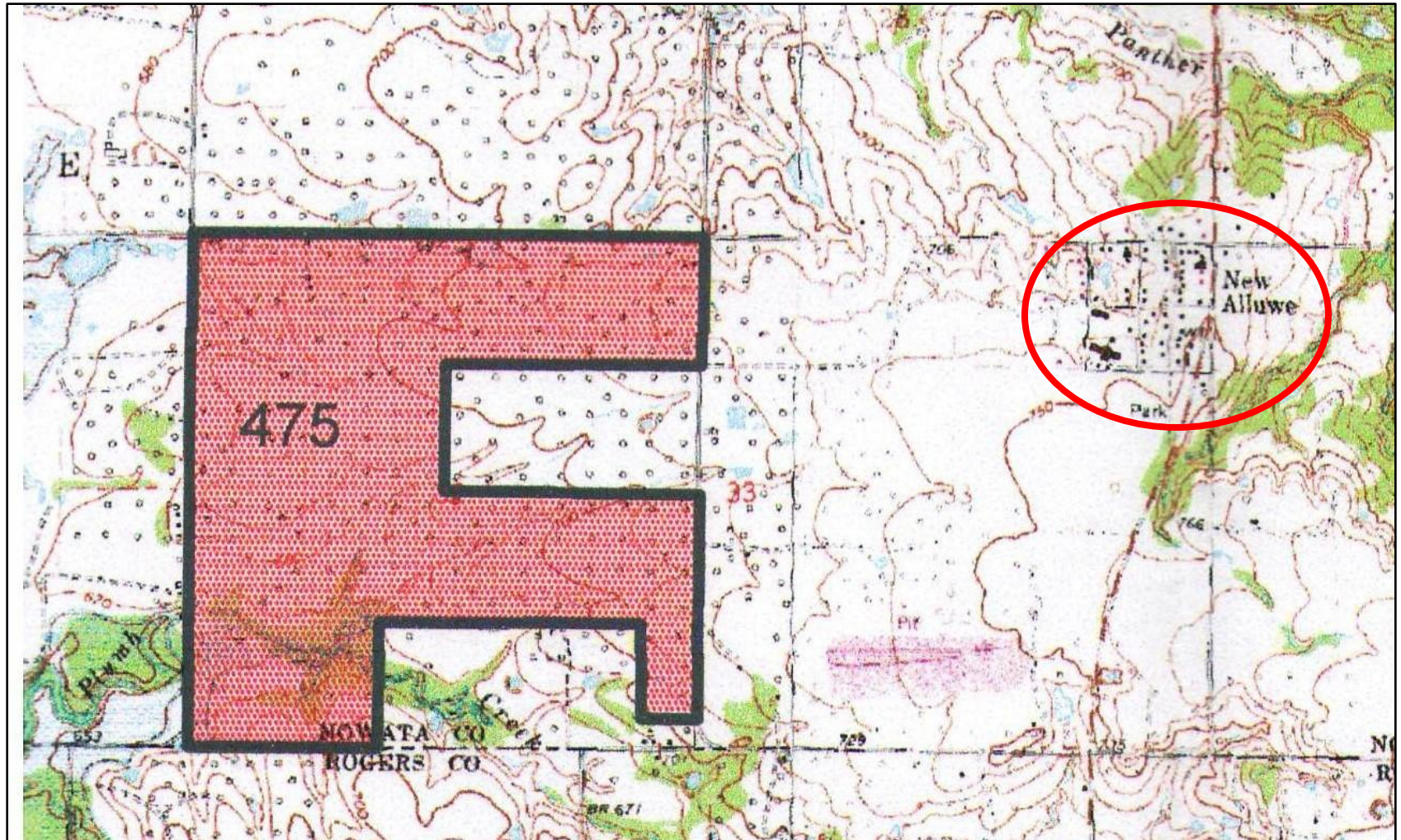


Good fence, grass & water. No minerals sell, surface only. \$1,650 per acre.







475 acres of good grazing & hunting with great access on good roads. The grass is a mix of Native, Fescue & Bermuda and it provides good grazing. Plumb Creek cuts across the Southwest corner of the property. Some trees give cover for wildlife and great hunting.

For Information or Showing:
JC Barr, Broker
jakebarr1954@gmail.com
405-245-7585 cell
405-433-5636 off
Jcbarrauctions.com

