



Coldwell Banker United

4521 Commanders Point Dr

Austin, TX 78734

\$14,950,000

- 30 Acres
- Iconic Gated & Private Estate
- 9,642 sq ft Main Luxury Home
- 4 Bedrooms, 7 Baths in Main Home
- 650 ft of Lake Travis Waterfront
- Private 2-slip Boat Dock
- Incredible Scenic Views of Lake Travis
- Pool and Spa Looking Out to Views
- 2,932 sq ft Guest House
- 2,025 sq ft Equestrian Barn, Full Horse Facilities
- 1,647 sq ft Guest Apartment
- Meticulously Manicured Grounds, Gardens, Koi Pond
- Recreation includes Riding Trails, Tennis & Basketball Courts, more
- Lake Travis ISD



GLOBAL
LUXURYSM

MLS# 1640752 | Travis County

Welcome to Commanders Point Estate, one of the most iconic luxury estates in all of Central Texas. Residing on the shores of Lake Travis, just north of Mansfield Dam Park, the stunning 9,642 sq ft home has echoes of the great country houses of the United Kingdom, and looks over the blue main basin of the lake with views for miles. Entering the 30 acres via a vine covered stone gate, one proceeds through a winding private drive through towering mature oak trees and lush pastures. Approaching the home, one is taken with the extensive stone work and the clean, manicured lawns. Gardens and hidden pathways surround the luxury estate on all sides, with koi ponds, streams, and serene outdoor living being just some of the incredible estate features one stumbles upon. The back exterior of the home boasts a sprawling outdoor living, along with a pool and spa leading up to incredible lake views. The setting lends to amazing potential for entertaining and hosting parties on the terraces against the backdrop of Lake Travis. A boat lift near the west garden leads to a sizable boat dock with 2 slips, and deck for entertaining. The estate has approx. 650 ft. of waterfront, all on deep water Lake Travis.

The sweeping country house luxury estate is an amazing structure, with symmetry and design that is tasteful and refined. The home was engineered with many windows opening up to the lake side of the home, such as arched floor to ceiling windows that grace the main living area. Lake views are available throughout the home. The sizable gourmet kitchen features top line commercial grade appliances, custom cabinetry, center island, and breakfast area cove. Exploring the home is a delight. A beautiful parlor opens to the pool area, while a multi-level library with catwalk is adorned by beamed hardwood ceilings.

The master suite is a lesson in ultimate luxury, with an enormous jetted spa flanked by elegant columns, and looking out to the lake through a triad of beautiful arched windows. The master bedroom opens to an additional living area, both with access to balconies and views. There is a wealth of other interior features including a media room and a sprawling full-scale exercise complex. Outside the home are numerous options for outdoor recreation including full-sized basketball courts, tennis courts, hiking trails, and riding trails along with full equestrian facilities. To the west of the main estate is a 2,025 sq ft equestrian barn, along with standalone 1,647 sq ft foreman's home, and hay barn. Beautiful, white fenced pastures surround the equestrian facilities, along with a lighted riding arena. In addition to the main estate and equestrian operation, there is also a 2,932 sq ft guest house to the north of the luxury home, with its own incredible views of the lake.

This gated luxury estate has easy nearby access to FM 620, with Lakeway and South Lake Travis being just minutes away, including The Oasis and amazing lake area parks. *Co-listed with Eric Moreland, Realtor®.*



Dave Murray, Broker, REALTOR®

DMTX Realty

Coldwell Banker United

Phone: 512-751-6060

E-mail: Dave@dmtx.com

dmtx.com



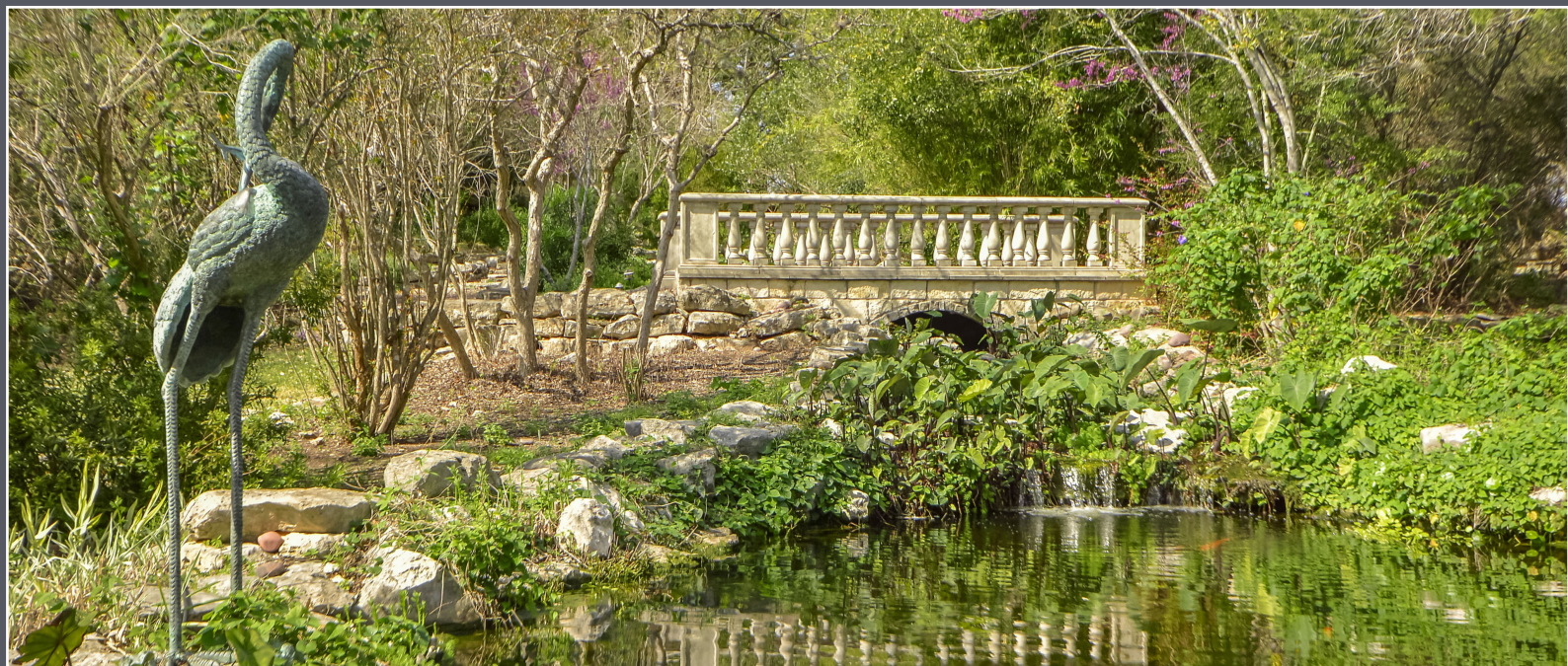




GUEST HOME



EQUESTRIAN FACILITIES





Coldwell Banker United



Equestrian Facilities

Gate



Helipad



Guest Home



Main Luxury Home



Recreational Complex

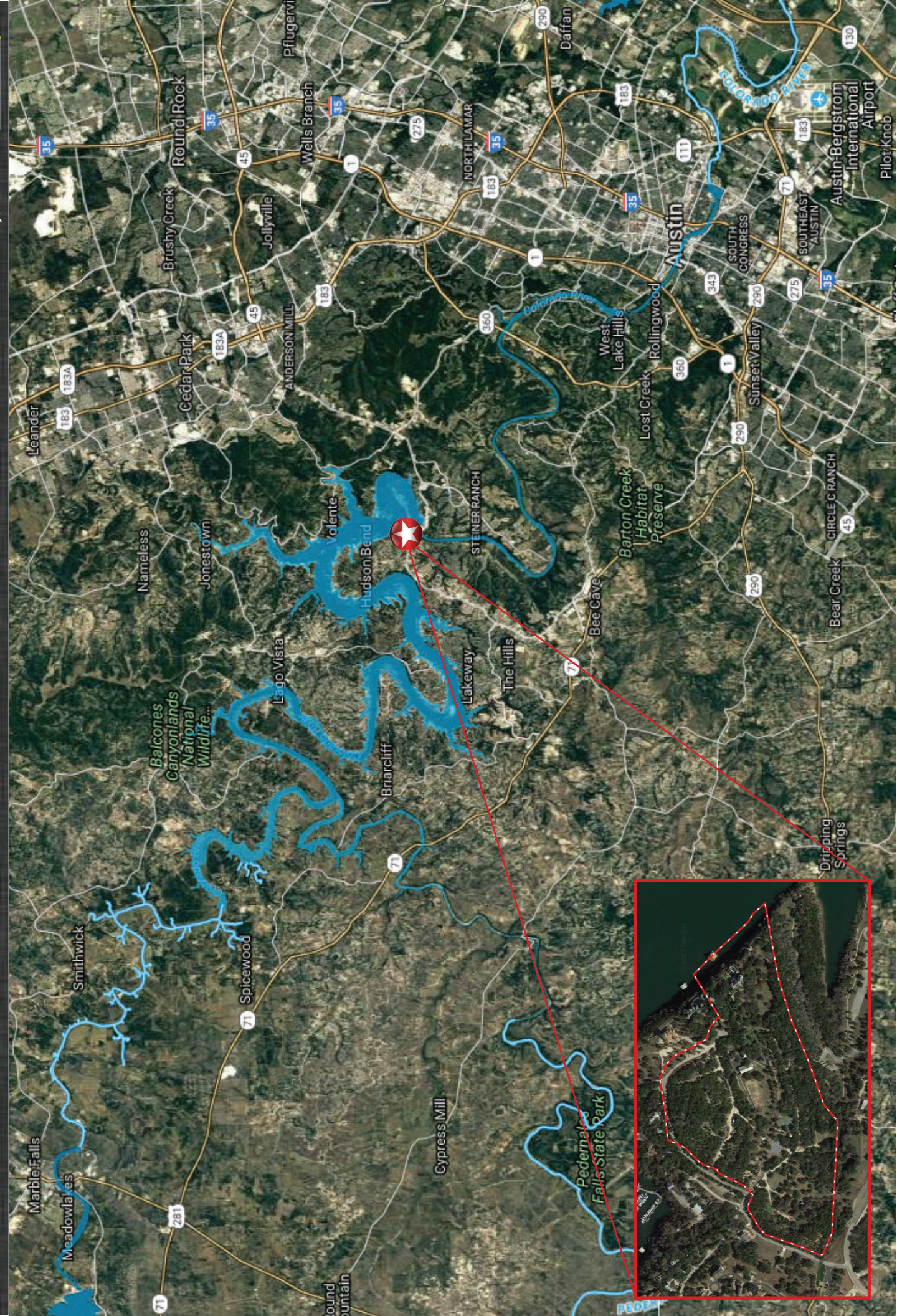
Commanders Point Estate on Lake Travis

4521 Commanders Point Drive
Austin, TX 78734

Dave Murray, Broker, Realtor®

512.695.2176

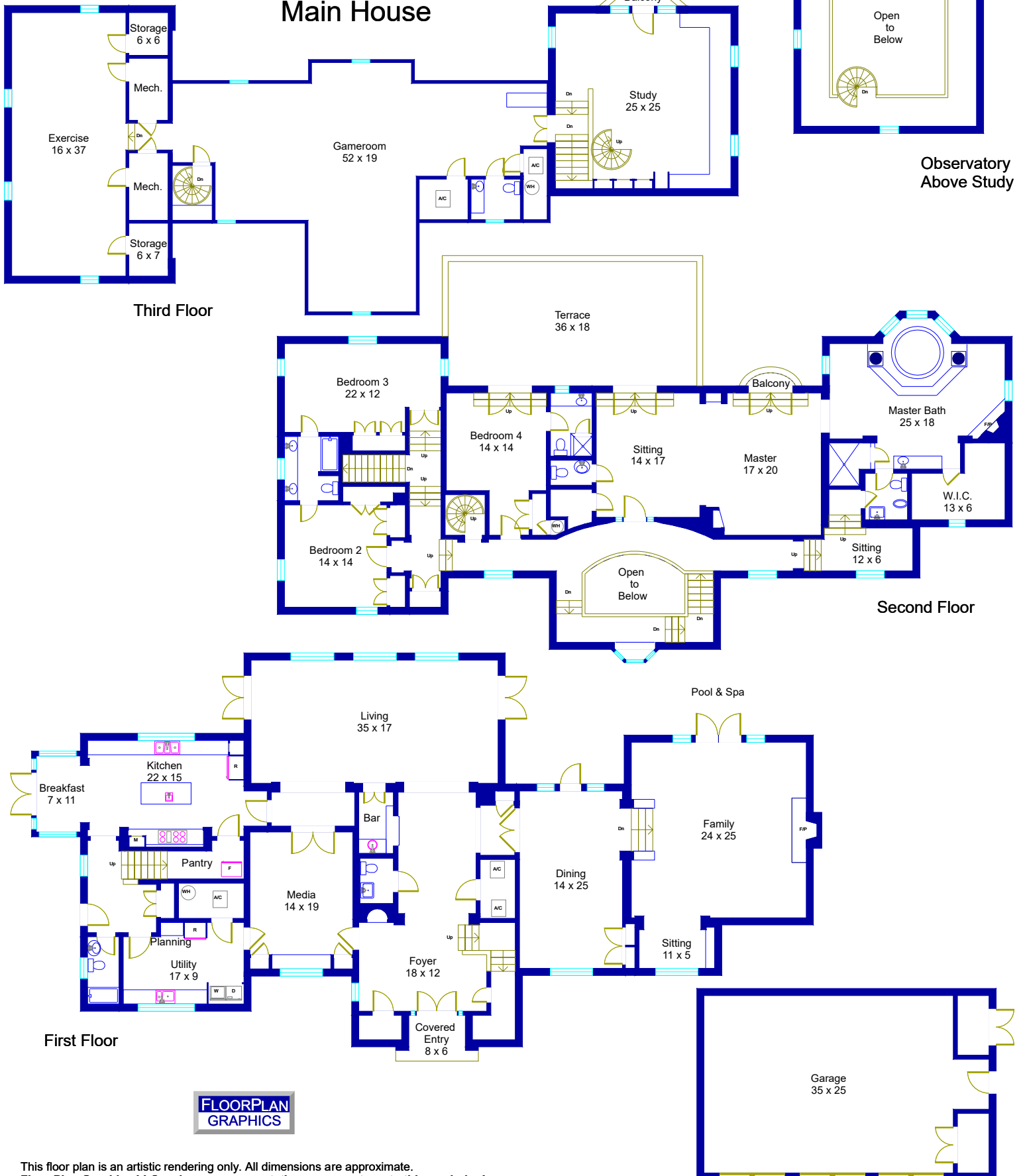
Dave@dm tx.com



4521 Commanders Point Dr

Austin, Texas

Main House



This floor plan is an artistic rendering only. All dimensions are approximate.
Floor Plan Graphics LLC makes no representation or warranty as to this rendering's accuracy
and no measurements or dimensions should be relied upon without independent verification.