



# Farmland Sales Specialists

*Setting the trend for how Real Estate is sold in the Midwest.*  
[www.BarnesRealty.com](http://www.BarnesRealty.com)

18156 Hwy 59  
Mound City, MO 64470  
(660) 442-3177

1711 Oregon  
Hiawatha, KS 66434  
(785) 742-4580

1708 Prairie View Rd, Suite B  
Platte City, MO 64079  
(816) 219-3010

## *Home, Garage & Implement Shed, Holt County, MO*

### **BEST OF THE BEST!!**

If you're looking for a place to build a nice machine shed, look no further!! Sitting in the middle of some of the best waterfowl hunting in the continental United States, this acreage is close to Mound City, Mo and has interstate access nearby.

### **LOCATION:**

Take Highway 118 West out of Mound City, Missouri to Ironwood Rd. Go North on Ironwood Rd. for approximately 2 miles. The property will be on the right.

### **PRICE:** Divide Options Available

\$156,000.00 for Both

\$69,500.00 for Home & Garage

\$86,500.00 for Implement Shed

### **IMPROVEMENTS:**

160' x 40' Implement shed

### **TAXES/TAXABLE ACRES:**

2015 taxes were \$1,511.63 for 0.65 acres, home, garage and implement shed

### **HOME FEATURES:**

3 Bedroom, 2 Bathroom, Attached garage

### **LISTING AGENT:**

Jamie Barnes (660) 851-1125

[jamie@barnesrealty.com](mailto:jamie@barnesrealty.com)



### **BROKER PARTICIPATION:**

Barnes Realty Company, as listing broker, will gladly and fully cooperate with most licensed real estate brokers to obtain a sale of the property on terms satisfactory to the current owners.

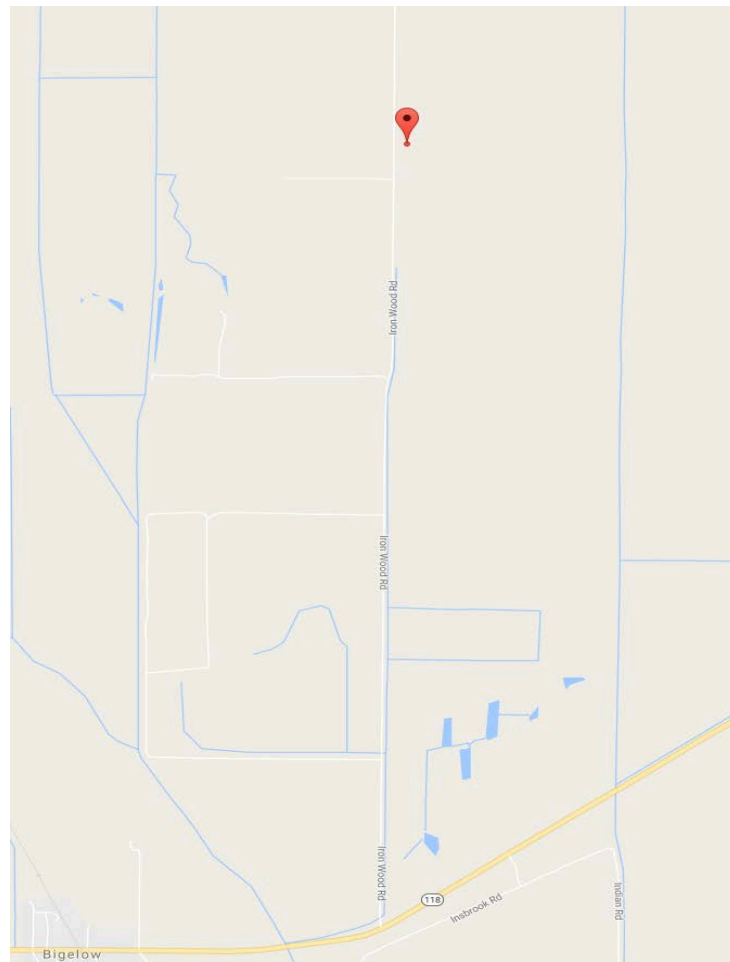
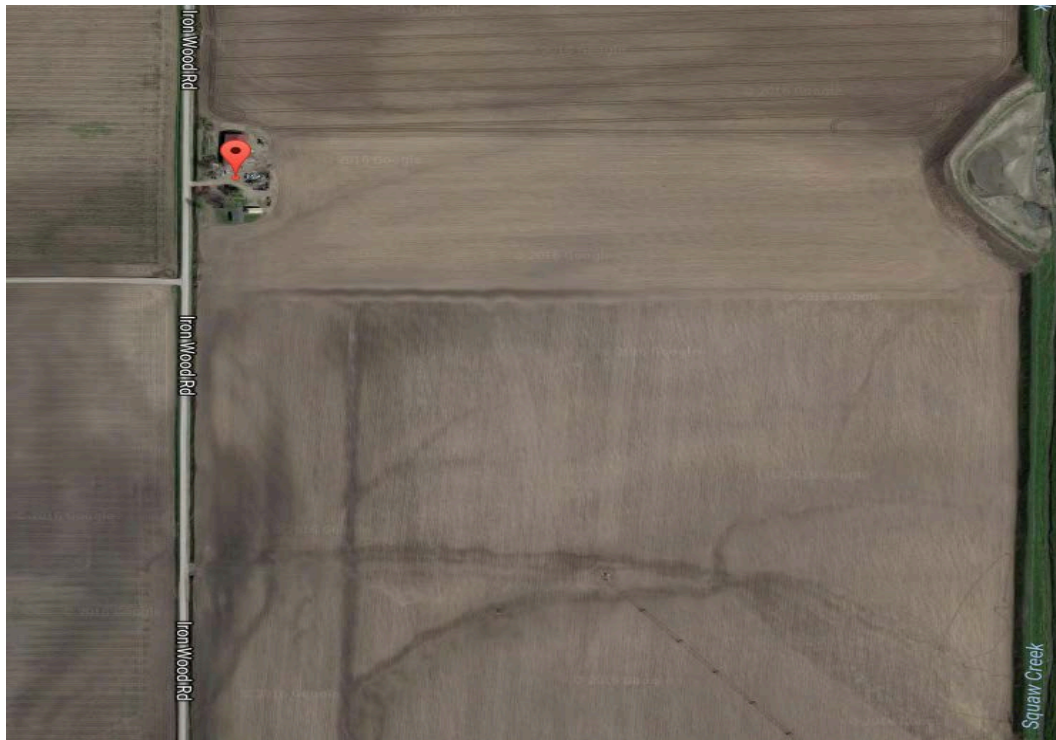
*Setting the trend for how Real Estate is sold in the Midwest.*

This information is thought to be accurate; however it is subject to verification and no liability for error and omissions is assumed. Barnes Realty has made every effort to present accurate information on the property presented. Most of the information comes from outside sources:

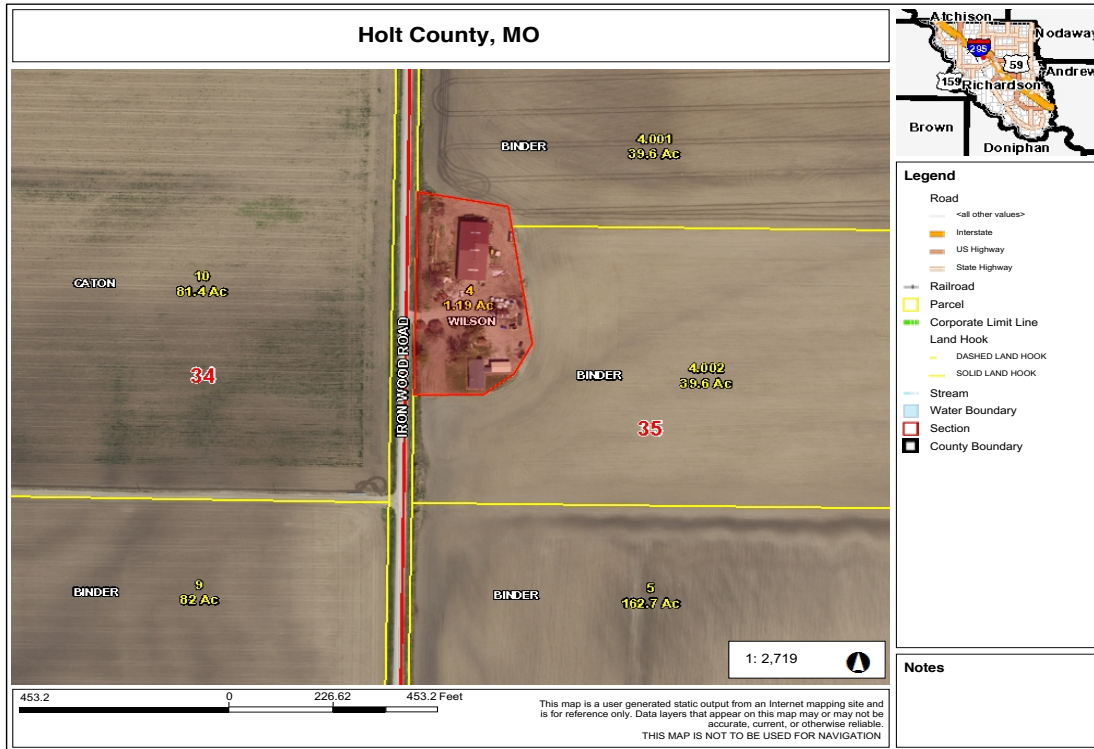
County/Government/Seller and human error can occur. It's the buyer's responsibility to satisfy himself with the information presented and to determine the information to be true and accurate and the property to be suited for his intended use. The listing may be withdrawn with or without approval. The seller further reserves the right to reject any and all offers. All inquiries, inspections, appointments, and offers must be sent thorough:

Rick Barnes, BARNES REALTY COMPANY, 18156 HWY 59, MOUND CITY, MO 64470 PHONE NUMBER: 1-660-442-3177

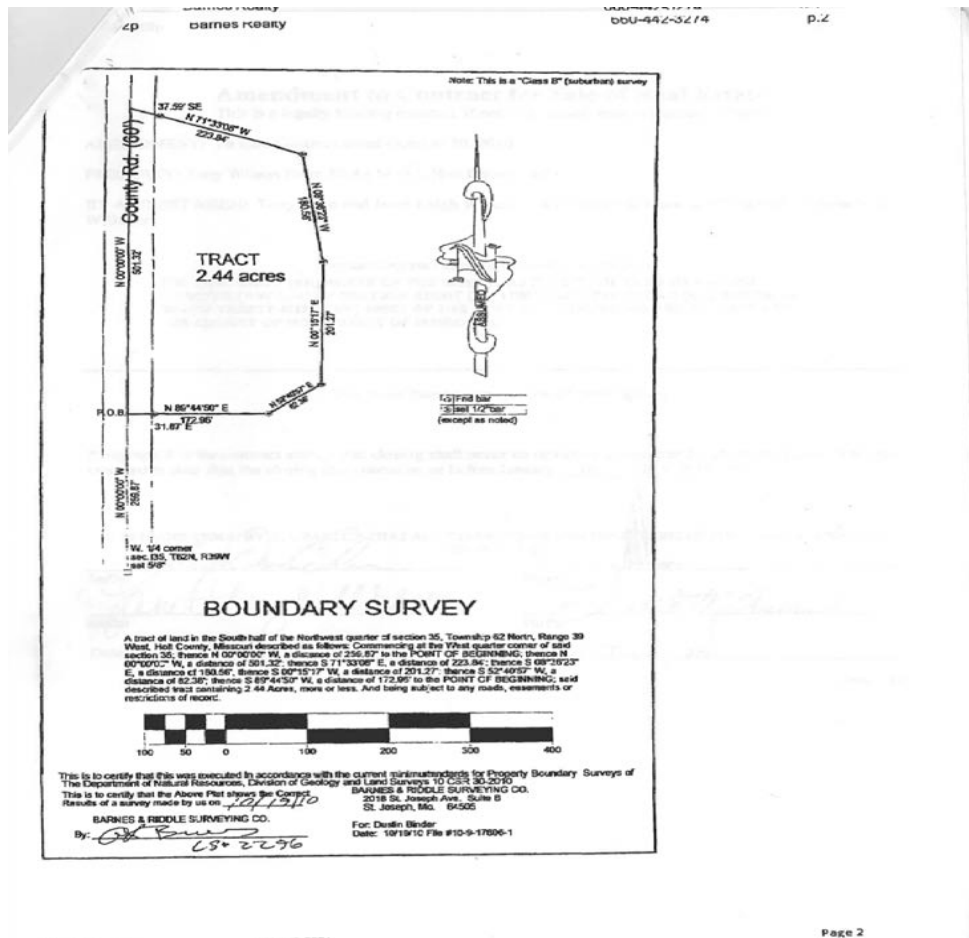
***Home, Garage & Implement Shed, Holt County, MO***  
***Google Aerial***



# Home, Garage & Implement Shed, Holt County, MO Tax Map



## Survey





*Home, Garage & Implement Shed, Holt County, MO*  
*Aerial Pictures*





*Home, Garage & Implement Shed, Holt County, MO*



*Home, Garage & Implement Shed, Holt County, MO*





*Home, Garage & Implement Shed, Holt County, MO*

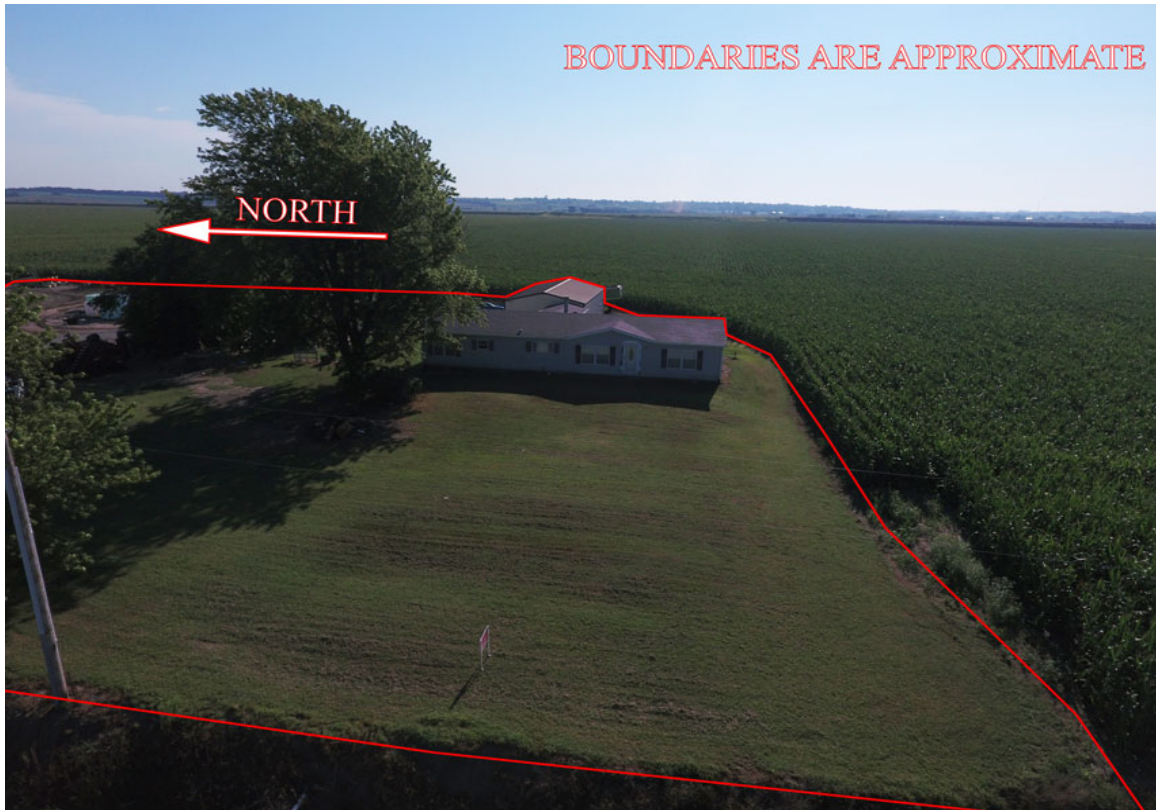


*Home, Garage & Implement Shed, Holt County, MO*





*Home, Garage & Implement Shed, Holt County, MO*



*Interior Pictures*



*Home, Garage & Implement Shed, Holt County, MO*





*Home, Garage & Implement Shed, Holt County, MO*

