



**Beautiful 297 Acres in
Coryell County**

**TBD FM 182 • Gatesville, TX
Call or Text 254.206.3635 with
code '6024' for 24/7 info!**



GoreGroupTexas.com

2424 E. Main St. • Gatesville, TX 76528

254.206.0915 • Office: 254.248.0809



Possibilities are endless on this 297 acre ranch just north of Gatesville. The land is in a prime location on FM 182, just minutes off of Hwy 36.

Conveniently located 40 miles from Waco, 39 miles to Temple, 117 mile to Austin, 215 miles to Houston, & 134 miles to DFW. This rugged acreage features elevation changes with amazing views, a large stock tank, and a seasonal creek. There is a canyon running across this property. Very nice tree coverage including live oaks, post oaks, mesquite, cedar, and elms.

Owners have installed new fencing on part of the property. The terrain is varied and suitable for grazing. The

land would make a great family recreational property or permanent residence. The views are stunning, and there is an abundance of wildlife throughout the property including, deer, dove, turkey, and quail. Sellers own 100% of minerals and surface rights. The property has an ag exemption.

Your dreams are our goals...

GORE
REAL ESTATE GROUP

Selling Texas a Little at a Time.

Property Information Overview

Acreage.....	297 Acres
Location.....	TBD FM 182. Gatesville TX
Price.....	\$1,072,500
Highest and Best Use.....	Agriculture, Hunting, Grazing
Surface Water.....	Tank, Seasonal Creek, Natural Spring
Soil.....	Doss Real Complex, Silty Clay
Minerals.....	100% Owned
Trees.....	Live Oak, Post Oak, Mesquite, Bur Oak, Cedar, Elm
Topography.....	Rolling
Utilities.....	Outside City Limits
School District.....	Gatesville ISD
Taxes.....	TBD, has ag exemption
Distance from Waco.....	40
Distance from Temple.....	39
Distance from Austin.....	117
Distance from Houston.....	215
Distance from DFW.....	134

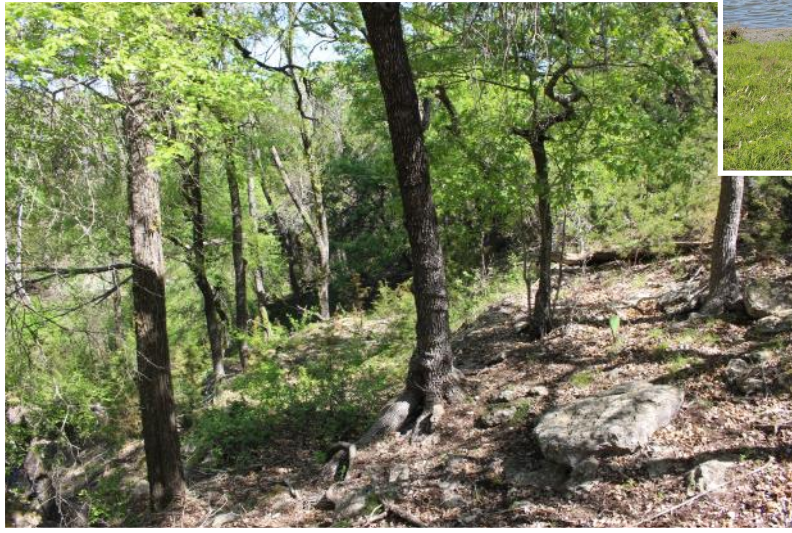


Directions: From Gatesville Wal-Mart, take Hwy 36 North, take FM 182 right, go 2 miles, watch for signs on the left.

Large Tank



Native Tree Cover



Seasonal Creek

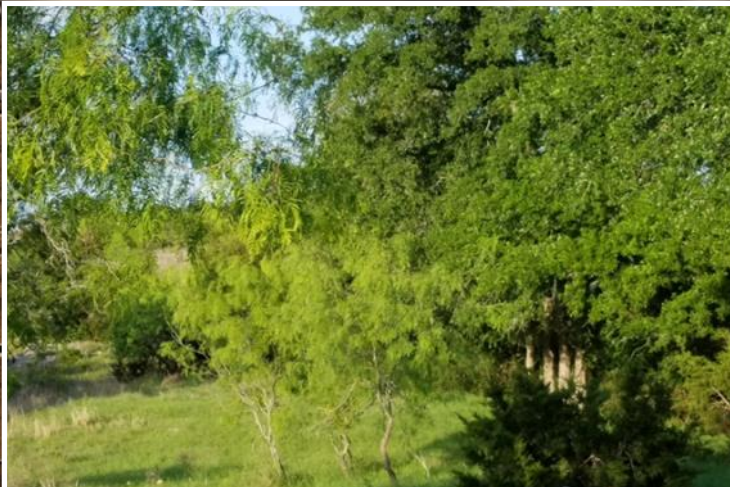


Open Grazing





Beautiful acreage.

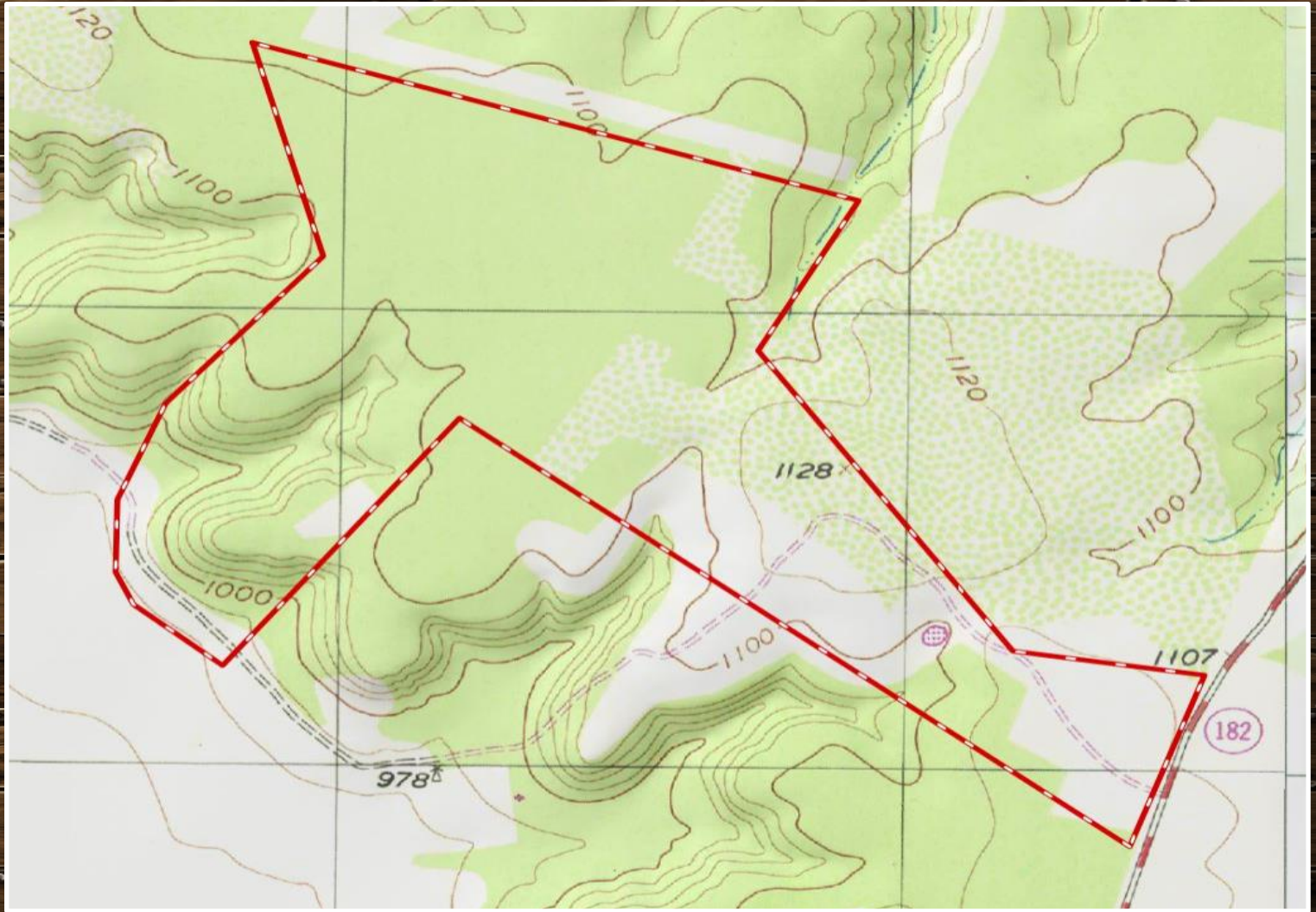


Aerial Map



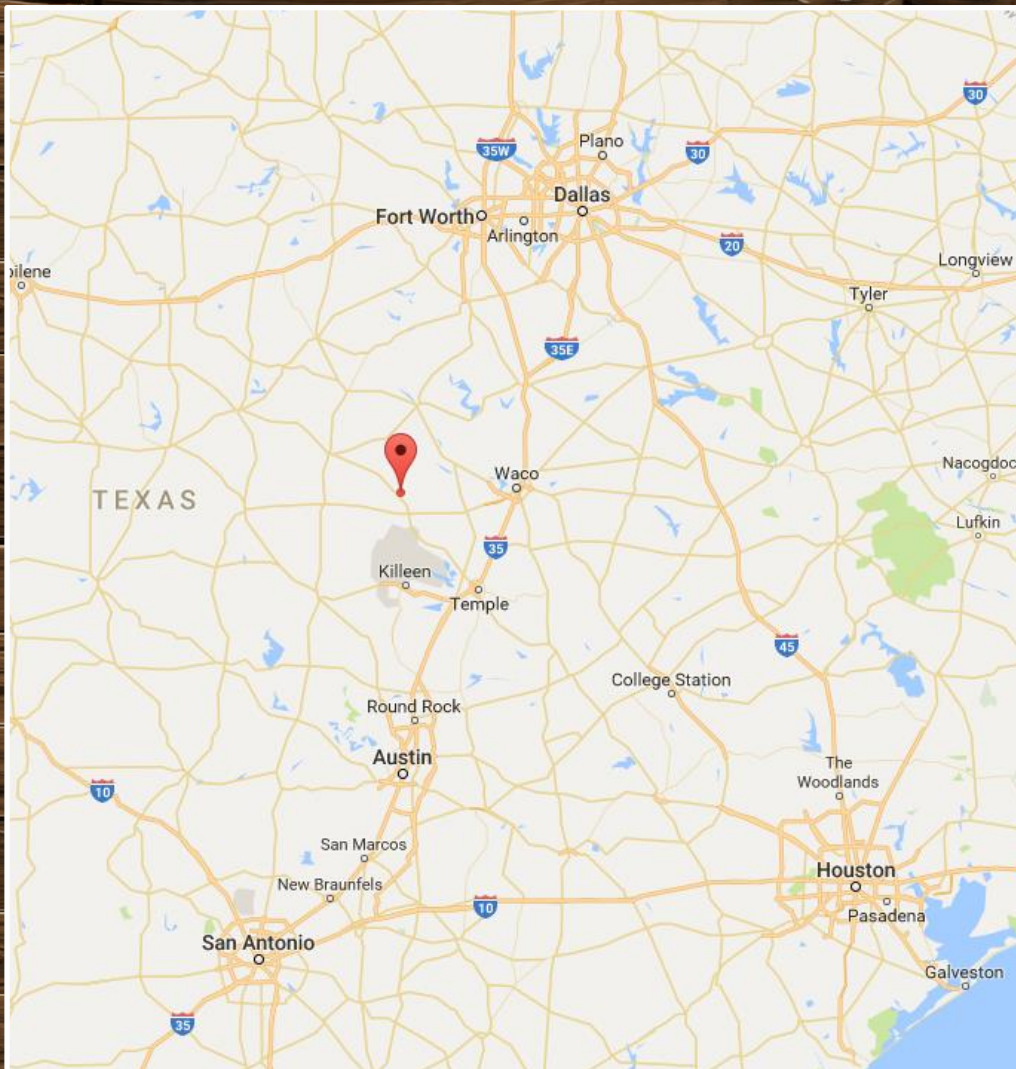
Boundary lines are an approximation and are not final.

Topography Map



Boundary lines are an approximation and are not final.

Location Map



TBD FM 182 • Gatesville, TX 76528

**GPS Coordinates can be typed into Google Earth or
Google Maps for property location:**

31.53095, -97.75288

Boundary lines are an approximation and are not final.



Kim Gore, Broker

For more information on this listing, please contact:

Shelley Herring, Realtor

Cell: 254.865.3675

shelley@goregrouptexas.com



Shelley Herring, Realtor

DISCLAIMER

Broker and/or Agent does not make any representations, warranties or covenants of any kind or character, whether expressed or implied, with respect to the quality or condition of the property, the suitability of the property for any and all activities and uses which purchaser may conduct there on, compliance by the property with any laws, rules, ordinances or regulations if any applicable governmental authority, or habitability, merchantability, or fitness for any particular purpose. All drawings are neither legally recorded maps nor surveys and are not intended to be used as such. The information contained herein has been obtained from sources deemed reliable. However, we cannot warrant the complete accuracy thereof subject to errors, omissions, change of price, rental or other conditions, prior to sale, lease or financing, or withdrawal without notice. Broker and/or Agent does not make any representation regarding hazardous waste, as defined by the Texas Solid Waste Disposal Act and the regulations adopted there under, or the United States Environmental Protection Agency regulations or disposal or any other hazardous or toxic substance in or on the property; or the Endangered Species Act of 1973; or for live oak decline, oak wilt, or any other natural phenomena.

2424 E. Main St. • Gatesville, TX 76528

254.248.0809

GoreGroupTexas.com

