



## Vista West Ranch 92.4 Acres Edwards County, TX



Located in eastern Edwards County Great access via all-weather county maintained road  
35 minutes from I-H 10 and 20 minutes from Rocksprings

Private entrance off County Road

Level terrain on east side of ranch; Sloping to steep terrain to west offering super views  
Heavily wooded terrain

Deep canyons holding plenty of wildlife

Beautiful dry creek bottoms lined with a variety of species of live oak trees

Private water well, electricity, and licensed septic in place

3/2 1220 sq. ft. cabin with fire place; remodeled and ready to enjoy

Spacious porch offering 30 mile views to the west,  
perfect for watching the beautiful hill country sunsets

Two storage buildings, Skinning rack with light

All appliances, washing machine and dryer, plus commercial size ice maker

Nicely landscaped camp area offering a nice homey feel

Numerous large Indian mounds

6 corn feeders and 3 turkey feeders, 2 watering troughs

Miles of ATV trails

\$375,000

Listing #128

## Western Hill Country Realty

[www.westernhillcountryrealty.com](http://www.westernhillcountryrealty.com)

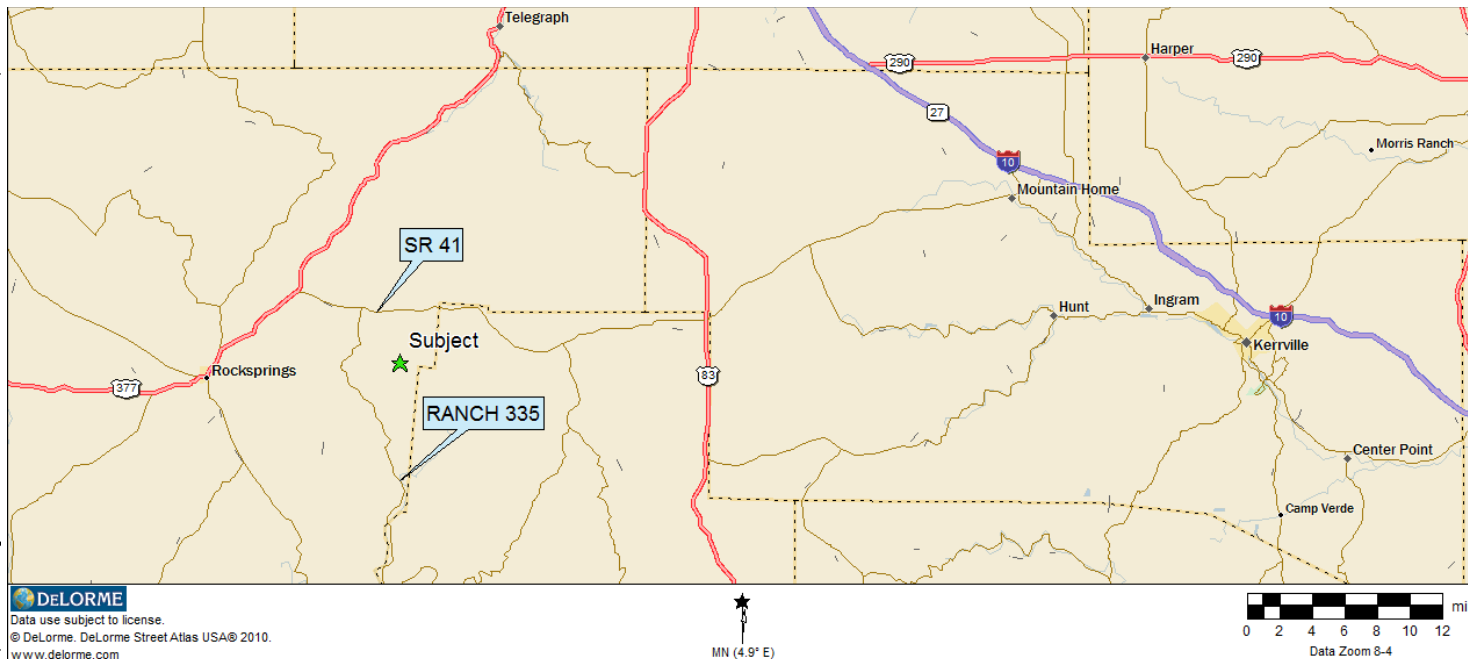
[info@westernhillcountryrealty.com](mailto:info@westernhillcountryrealty.com)

830-683-4435

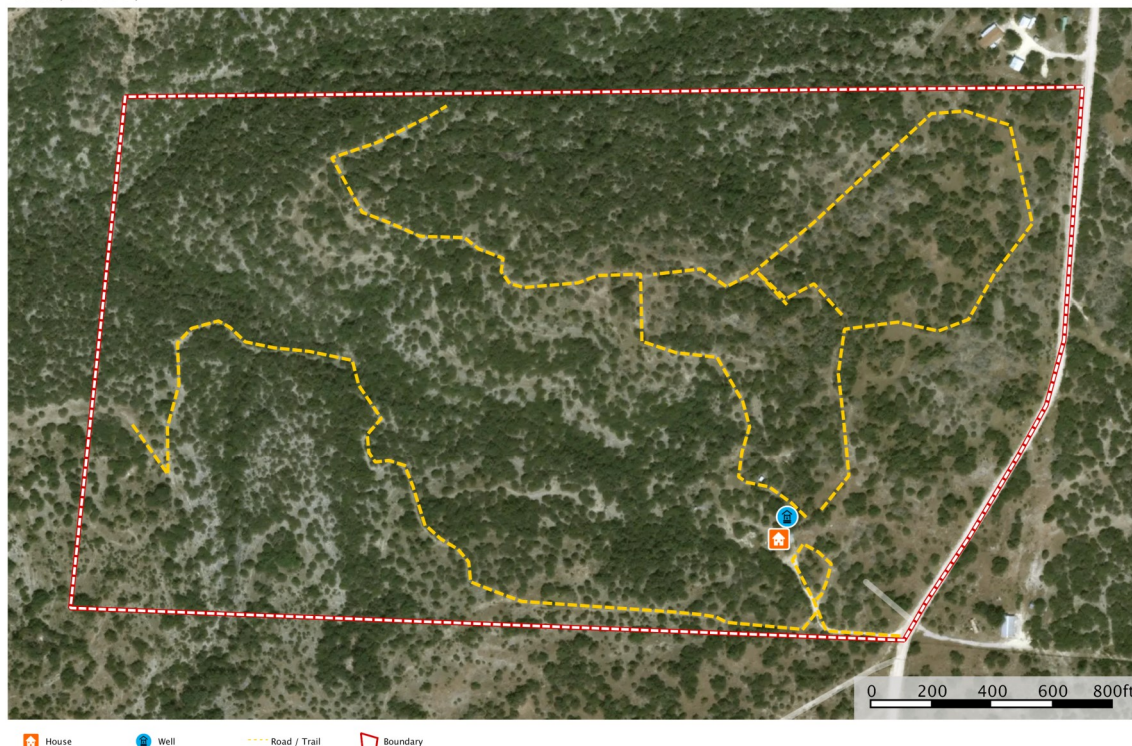




# Vista West Ranch 92.4 Acres Edwards County, TX



diamond vista west  
Texas, 92 AC +/-



glyn hendley  
P: 830-683-4435

whcr@swtexas.net

202 E. Main

The information contained herein was obtained from sources deemed to be reliable. Mapright Service makes no warranties or guarantees as to the completeness or accuracy thereof. 844.932.6277 - mapright.com

## Western Hill Country Realty

[www.westernhillcountryrealty.com](http://www.westernhillcountryrealty.com)

[info@westernhillcountryrealty.com](mailto:info@westernhillcountryrealty.com)

830-683-4435





**Vista West Ranch**

**92.4 Acres**

**Edwards County, TX**



**Western Hill Country Realty**

[www.westernhillcountryrealty.com](http://www.westernhillcountryrealty.com)

[info@westernhillcountryrealty.com](mailto:info@westernhillcountryrealty.com)

830-683-4435