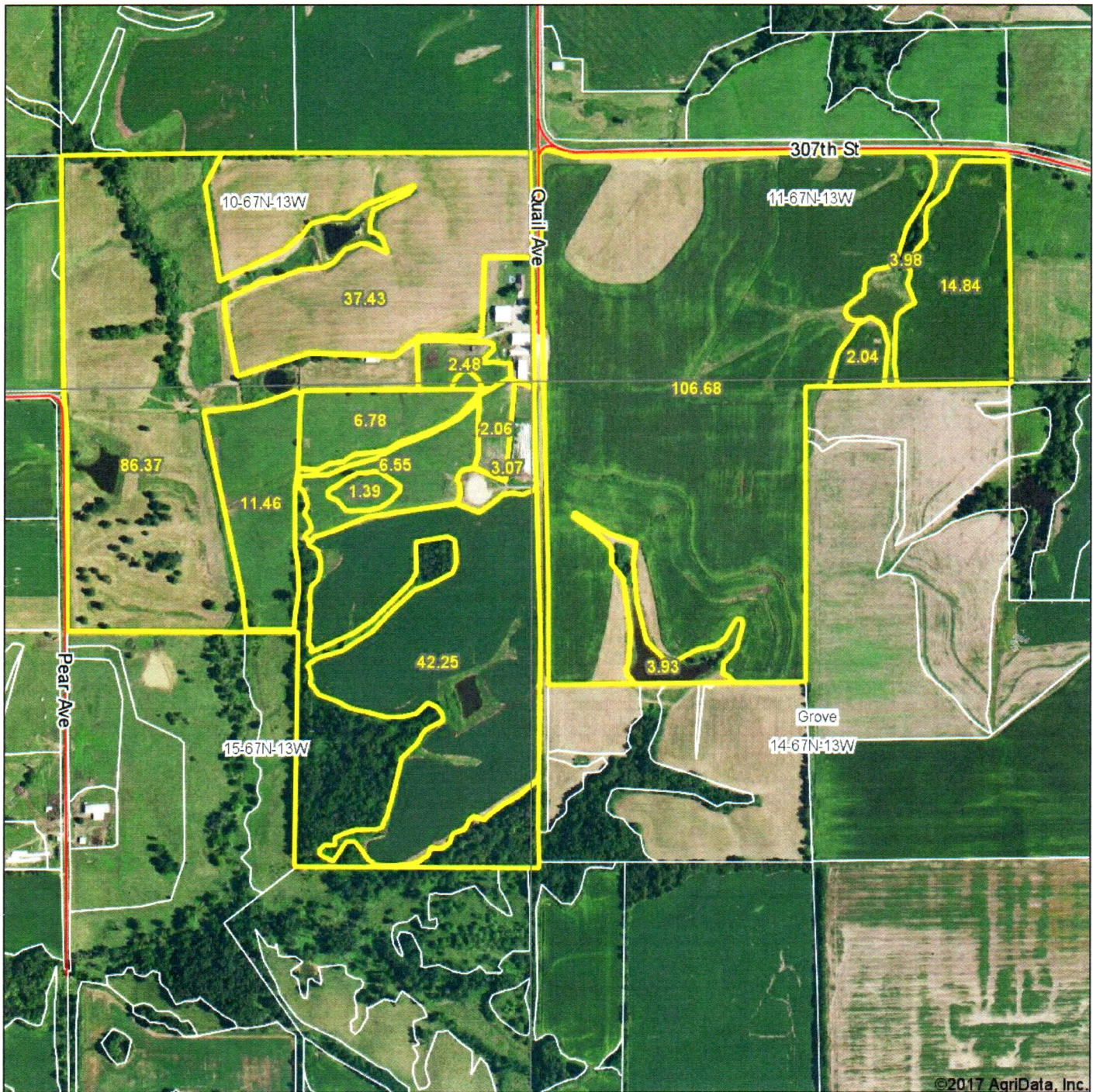


Aerial Map



Land Pros, LLC

map center: 40° 36' 26.85, -92° 19' 54.84

0ft 863ft 1726ft

Maps Provided By:



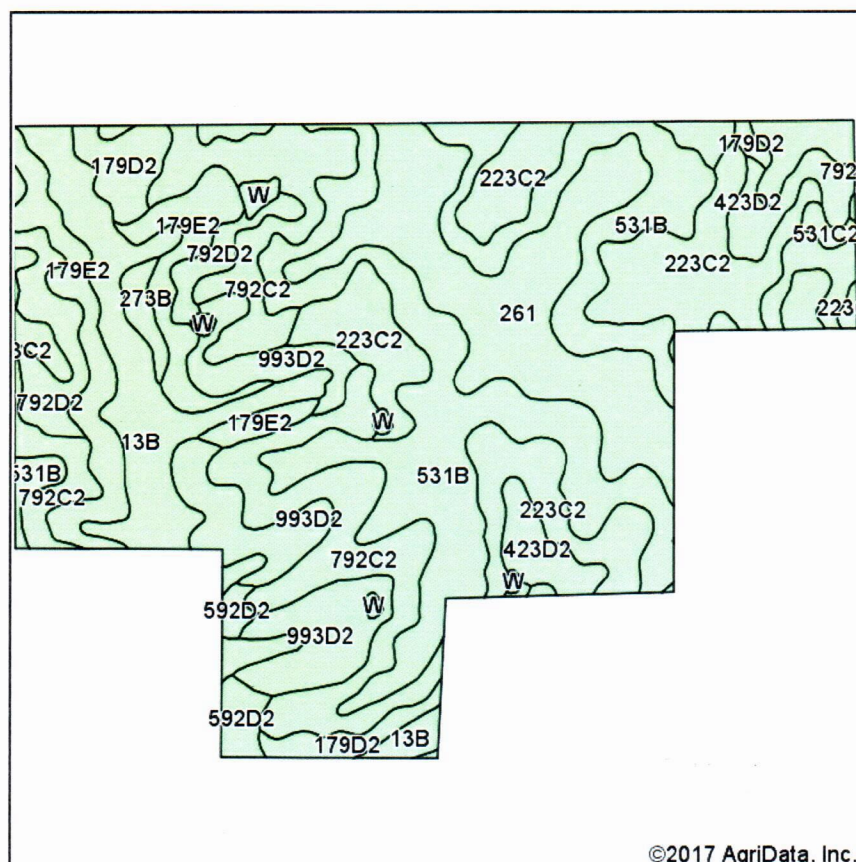
14-67N-13W
Davis County
Iowa



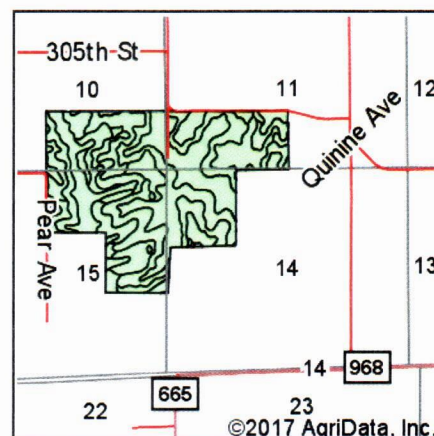
6/15/2017

Field borders provided by Farm Service Agency as of 5/21/2008.

Soils Map



Soils data provided by USDA and NRCS.



State: **Iowa**
County: **Davis**
Location: **15-67N-13W**
Township: **Grove**
Acres: **335.1**
Date: **7/13/2017**



Land Pros, LLC

Maps Provided By:



Area Symbol: IA051, Soil Area Version: 22

Code	Soil Description	Acres	Percent of field	Non-Irr Class *c	*i Corn	*i Alfalfa	*i Soybeans	CSR2**	CSR	Cor n	Soybeans
531B	Kniffin silt loam, 2 to 5 percent slopes	74.83	22.3%	IIIe	177.6	4.6	51.5	55	54		
792C2	Armstrong loam, 5 to 9 percent slopes, moderately eroded	48.81	14.6%	IIIe	123.2	3.2	35.7	51	27		
223C2	Rinda silty clay loam, 5 to 9 percent slopes, moderately eroded	44.72	13.3%	IVw	126.4	2.7	36.7	45	22		
261	Appanoose silt loam, 0 to 2 percent slopes	42.31	12.6%	IIIw	177.6	3.7	51.5	41	54		
13B	Olmitz-Vesser-Zook complex, 0 to 5 percent slopes	31.53	9.4%	IIw	200	4.2	58	74	60	59	16
993D2	Gara-Armstrong loams, 9 to 14 percent slopes, moderately eroded	25.26	7.5%	IVe	123.2	3.2	35.7	35	20		
179E2	Gara loam, 14 to 18 percent slopes, moderately eroded	23.71	7.1%	VIe	139.2	3.9	40.4	24	33		
792D2	Armstrong loam, 9 to 14 percent slopes, moderately eroded	11.60	3.5%	IVe	88	2.3	25.5	26	13		
423D2	Bucknell silty clay loam, 9 to 14 percent slopes, moderately eroded	10.97	3.3%	IVe	97.6	2.5	28.3	7	13		
179D2	Gara loam, 9 to 14 percent slopes, moderately eroded	9.99	3.0%	IVe	163.2	4.6	47.3	44	43		
592D2	Mystic silt loam, 9 to 14 percent slopes, moderately eroded	3.96	1.2%	IVe	88	2.3	25.5	49	5		
273B	Olmitz loam, heavy till, 2 to 5 percent slopes	2.37	0.7%	IIe	224	6.3	65	81	72	152	41
W	Water	2.14	0.6%		0	0	0	0	0		
531C	Kniffin silt loam, 5 to 9 percent slopes	1.70	0.5%	IIIe	155.2	4	45	52	36		
531C2	Kniffin silty clay loam, 5 to 9 percent slopes, moderately eroded	1.20	0.4%	IIIe	150.4	3.9	43.6	48	31		
Weighted Average					149.9	3.6	43.5	46.2	38.3	6.6	1.8

**IA has updated the CSR values for each county to CSR2.

*i Yield data provided by the ISPAID Database version 8.1 developed by IA State University.

*c: Using Capabilities Class Dominant Condition Aggregation Method

Soils data provided by USDA and NRCS.