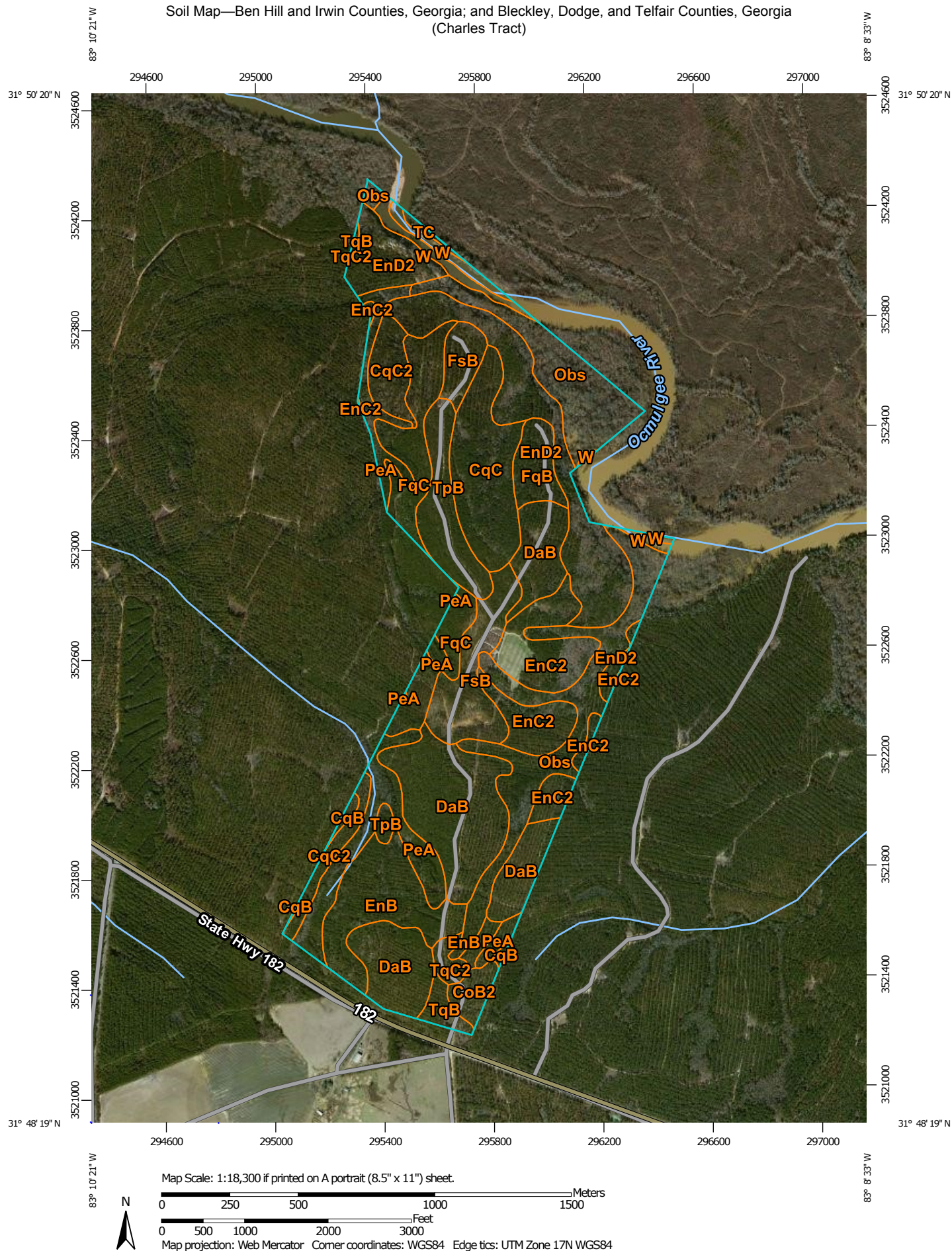



Soil Map—Ben Hill and Irwin Counties, Georgia; and Bleckley, Dodge, and Telfair Counties, Georgia
(Charles Tract)



Soil Map—Ben Hill and Irwin Counties, Georgia; and Bleckley, Dodge, and Telfair Counties, Georgia
(Charles Tract)

MAP LEGEND

Area of Interest (AOI)

 Area of Interest (AOI)

Soils

 Soil Map Unit Polygons

 Soil Map Unit Lines

 Soil Map Unit Points

Special Point Features



Blowout



Borrow Pit



Clay Spot



Closed Depression



Gravel Pit



Gravelly Spot



Landfill



Lava Flow



Marsh or swamp



Mine or Quarry



Miscellaneous Water



Perennial Water



Rock Outcrop



Saline Spot



Sandy Spot



Severely Eroded Spot



Sinkhole



Slide or Slip



Sodic Spot



Spoil Area



Stony Spot



Very Stony Spot



Wet Spot



Other



Special Line Features

Water Features



Streams and Canals

Transportation



Rails



Interstate Highways



US Routes



Major Roads



Local Roads

Background



Aerial Photography

MAP INFORMATION

The soil surveys that comprise your AOI were mapped at 1:20,000.

Please rely on the bar scale on each map sheet for map measurements.

Source of Map: Natural Resources Conservation Service

Web Soil Survey URL: <http://websoilsurvey.nrcs.usda.gov>

Coordinate System: Web Mercator (EPSG:3857)

Maps from the Web Soil Survey are based on the Web Mercator projection, which preserves direction and shape but distorts distance and area. A projection that preserves area, such as the Albers equal-area conic projection, should be used if more accurate calculations of distance or area are required.

This product is generated from the USDA-NRCS certified data as of the version date(s) listed below.

Soil Survey Area: Ben Hill and Irwin Counties, Georgia

Survey Area Data: Version 8, Sep 23, 2014

Soil Survey Area: Bleckley, Dodge, and Telfair Counties, Georgia

Survey Area Data: Version 8, Sep 19, 2014

Your area of interest (AOI) includes more than one soil survey area. These survey areas may have been mapped at different scales, with a different land use in mind, at different times, or at different levels of detail. This may result in map unit symbols, soil properties, and interpretations that do not completely agree across soil survey area boundaries.

Soil map units are labeled (as space allows) for map scales 1:50,000 or larger.

Date(s) aerial images were photographed: Apr 23, 2010—Mar 17, 2011

The orthophoto or other base map on which the soil lines were compiled and digitized probably differs from the background imagery displayed on these maps. As a result, some minor shifting of map unit boundaries may be evident.

Map Unit Legend

Ben Hill and Irwin Counties, Georgia (GA608)			
Map Unit Symbol	Map Unit Name	Acres in AOI	Percent of AOI
CoB2	Carnegie sandy loam, 2 to 5 percent slopes, eroded	6.1	1.1%
CqB	Cowarts loamy sand, 2 to 5 percent slopes	8.5	1.6%
CqC	Cowarts loamy sand, 5 to 8 percent slopes	35.2	6.6%
CqC2	Cowarts loamy sand, 5 to 8 percent slopes, eroded	18.1	3.4%
DaB	Dothan loamy sand, 2 to 5 percent slopes	88.9	16.8%
EnB	Esto loamy coarse sand, 2 to 5 percent slopes	34.7	6.6%
EnC2	Esto loamy coarse sand, 5 to 8 percent slopes, eroded	41.0	7.7%
EnD2	Esto loamy coarse sand, 8 to 12 percent slopes, eroded	65.7	12.4%
FqB	Fuquay loamy coarse sand, 2 to 5 percent slopes	10.9	2.1%
FqC	Fuquay loamy coarse sand, 5 to 8 percent slopes	28.6	5.4%
FsB	Fuquay loamy sand, 2 to 5 percent slopes	33.1	6.2%
Obs	Osier-Bibb complex	77.1	14.6%
PeA	Plummer sand, 0 to 3 percent slopes	37.7	7.1%
TpB	Troup sand, 0 to 5 percent slopes	22.8	4.3%
TqB	Tifton loamy sand, 2 to 5 percent slopes	5.1	1.0%
TqC2	Tifton loamy sand, 5 to 8 percent slopes, eroded	3.8	0.7%
W	Water	6.9	1.3%
Subtotals for Soil Survey Area		524.2	98.9%
Totals for Area of Interest		530.1	100.0%

Bleckley, Dodge, and Telfair Counties, Georgia (GA610)			
Map Unit Symbol	Map Unit Name	Acres in AOI	Percent of AOI
TC	Tawcaw-Chastain association, frequently flooded	1.2	0.2%
W	Water	4.6	0.9%
Subtotals for Soil Survey Area		5.8	1.1%
Totals for Area of Interest		530.1	100.0%

