

Denman Ferguson  
601-214-6433  
4 Corner Properties, LLC  
577 Hwy 51 Suite A  
Ridgeland, MS 39157  
denman@4cornerprop.com



Cell: 601-214-6433  
Office: 601-952-2828  
Fax: 601-510-9446

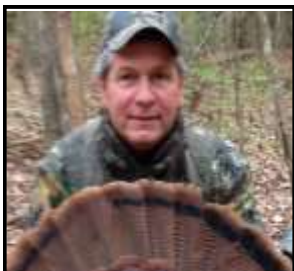
## *WINSTON COUNTY HUNTING TRACT* *244 ACRES, WINSTON, COUNTY, MS*

- 244 Acre Hunting/ Timber Tract
- 24 Year Old Natural Regeneration
- Large Hardwood Creek Bottom
- Great Young Timber Investment
- Road System Thu Property
- Noxapater Creek Runs Through Property
- Abundant Deer and Turkey
- Hardwoods and 22 Year Old Pine
- Easement to Property



**Winston County Hunting/Timber Tract, This property consists of 244 acres of 22 year old natural regeneration timber, Live creek flows thru property with hardwood bottoms. Loaded with deer and turkey. This property is priced to sell so call for your private showing today. Call Denman Ferguson 601-214-6433**

Directions: From Hwy 25 and Plattsburg Road go east on Plattsburg Rd to Hwy 395, then take a left onto Hwy 395 and go 4.4 miles, the, take a left onto Yarbrough-Carter Road, Go 2.7 miles and turn right onto Tucks-Wilkes Road , Go 2.3 miles to property, access is between houses, Turn in by old horse walker and hay storage and follow old road.



Denman Ferguson  
601-214-6433  
4 Corner Properties, LLC  
577 Hwy 51 Suite A  
Ridgeland, MS 39157  
denman@4cornerprop.com



Information is Believed to be Accurate but not Guaranteed

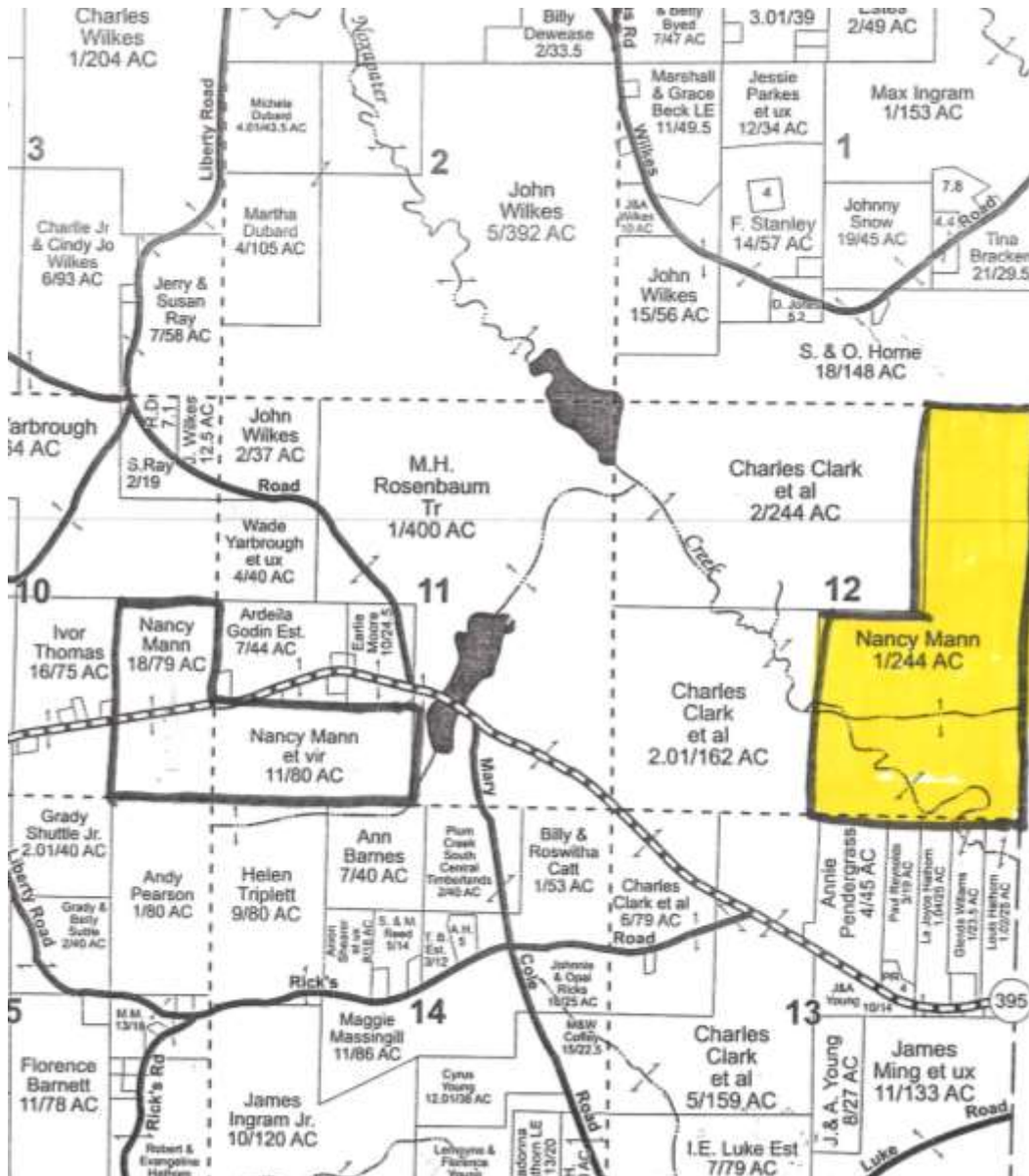




Denman Ferguson  
601-214-6433  
4 Corner Properties, LLC  
577 Hwy 51 Suite A  
Ridgeland, MS 39157  
denman@4cornerprop.com







## Ownership



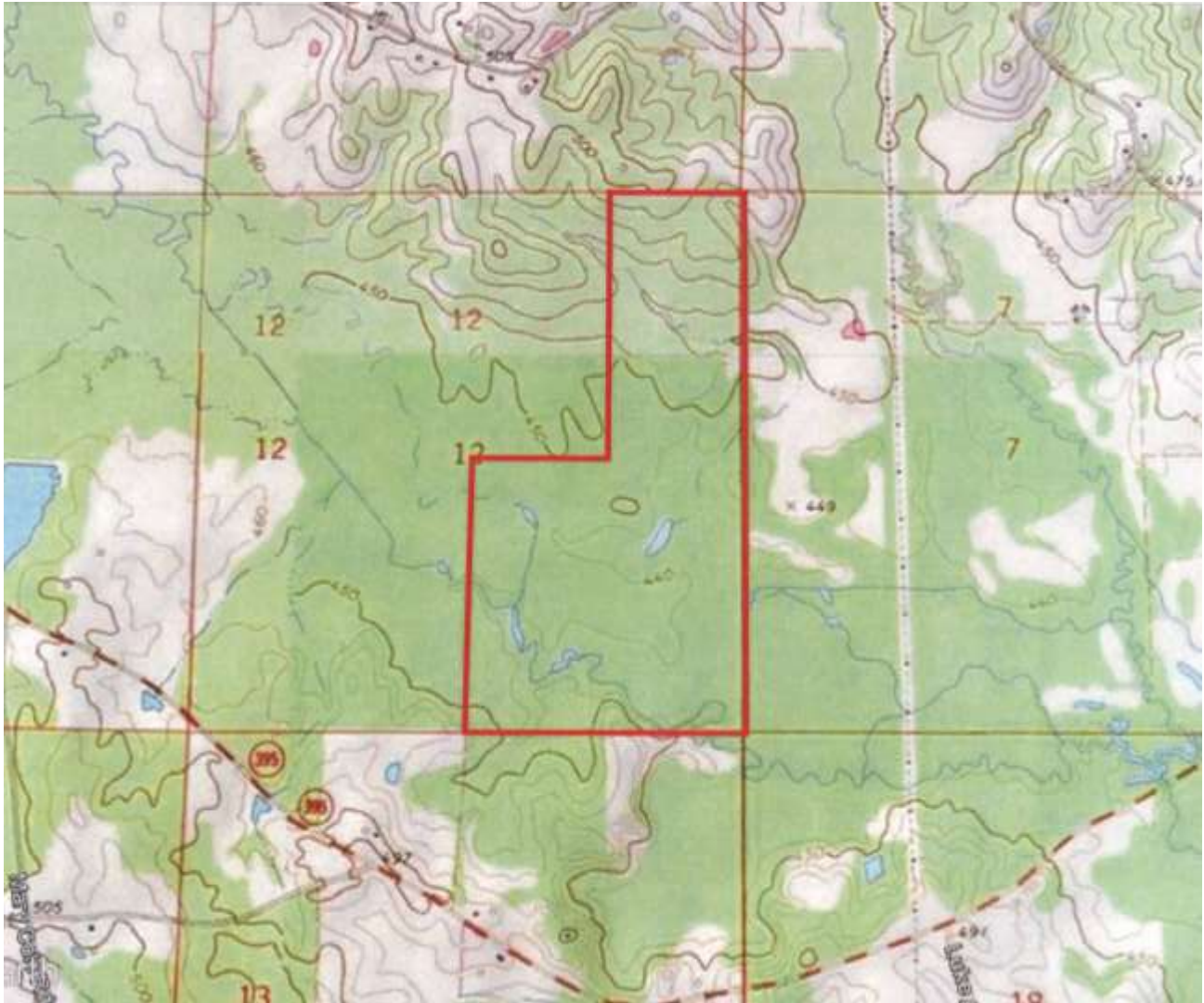
Denman Ferguson  
 601-214-6433  
 4 Corner Properties, LLC  
 577 Hwy 51 Suite A  
 Ridgeland, MS 39157  
[denman@4cornerprop.com](mailto:denman@4cornerprop.com)



### Aerial Photo



Denman Ferguson  
601-214-6433  
4 Corner Properties, LLC  
577 Hwy 51 Suite A  
Ridgeland, MS 39157  
[denman@4cornerprop.com](mailto:denman@4cornerprop.com)

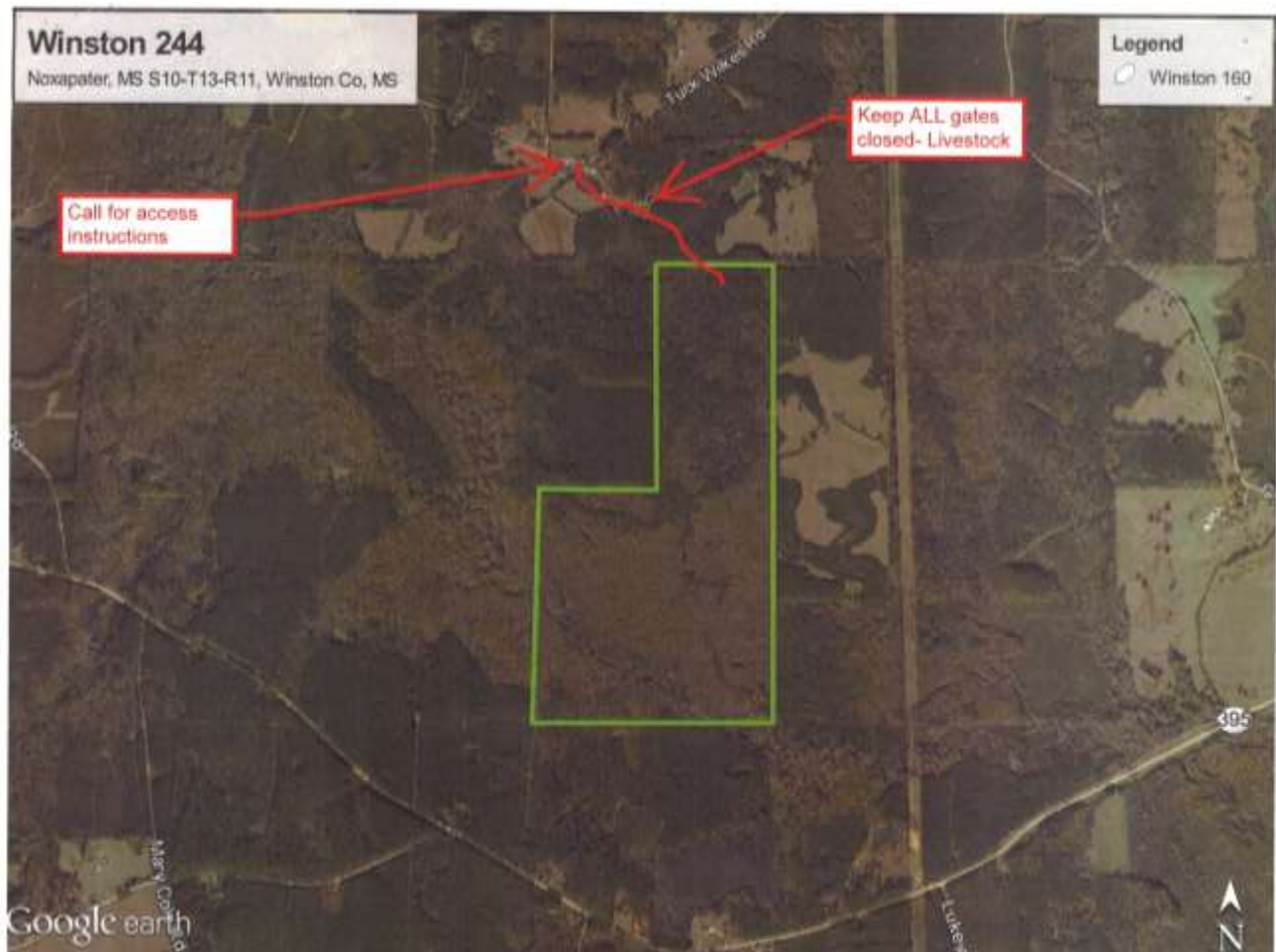


### Topo Map



Denman Ferguson  
601-214-6433  
4 Corner Properties, LLC  
577 Hwy 51 Suite A  
Ridgeland, MS 39157  
denman@4cornerprop.com





### Directional Map

Directions: From Hwy 25 and Plattsburg Road go east on Plattsburg Rd to Hwy 395, then take a left onto Hwy 395 and go 4.4 miles, then, take a left onto Yarbrough-Carter Road, Go 2.7 miles and turn right onto Tucks-Wilkes Road, Go 2.3 miles to property, access is between houses, Turn in by old horse walker and hay storage and follow old road.



Denman Ferguson  
601-214-6433  
4 Corner Properties, LLC  
577 Hwy 51 Suite A  
Ridgeland, MS 39157  
denman@4cornerprop.com