



# RIVERFRONT INTERCOASTAL EAST LOT

*LABELLE, FL | HENDRY COUNTY*

1.46 +/- ACRES



## SPECIFICATIONS & FEATURES

**Acreage:** 1.46 +/- acres

**Sale Price:** \$130,000

**Price per Acre:** \$89,041.10

**County:** Hendry

**Site Address:** 3871 County Road 78, LaBelle, FL 33935

**Road Frontage:** County Road 78

**Water Frontage:** 150 +/- FT on the Caloosahatchee River

**Soil Types:** Tuscawilla Fine Sand

**Land Cover:** Grass

**Uplands/Wetlands:** 100% uplands

**Zoning/FLU:** 0000 - Vacant Residential

**Current Use:** Vacant residential

**Annual Taxes:** \$2,256 (2016)

Enjoy living your waterfront lifestyle on this 1.46 +/- acre Caloosahatchee Riverfront lot with beautiful views of the river and gorgeous sunset shows every evening.

This is the perfect peaceful location for your dream home with 150 +/- feet of river frontage. There is plenty of room for a dock to accommodate your pleasure boat or yacht with Intercoastal waterway access to the Gulf of Mexico and the Atlantic Ocean.

The adjoining 1.48 +/- acre lot to the West is also available, giving you just under 3 +/- acres with 300 +/- feet of riverfront.

Downtown LaBelle 6.2 miles

Within 30 minutes of  
Downtown Fort Myers





## LOCATION & DRIVING DIRECTIONS

**Parcel IDs:** 1 28 43 11 040 000B-006.0

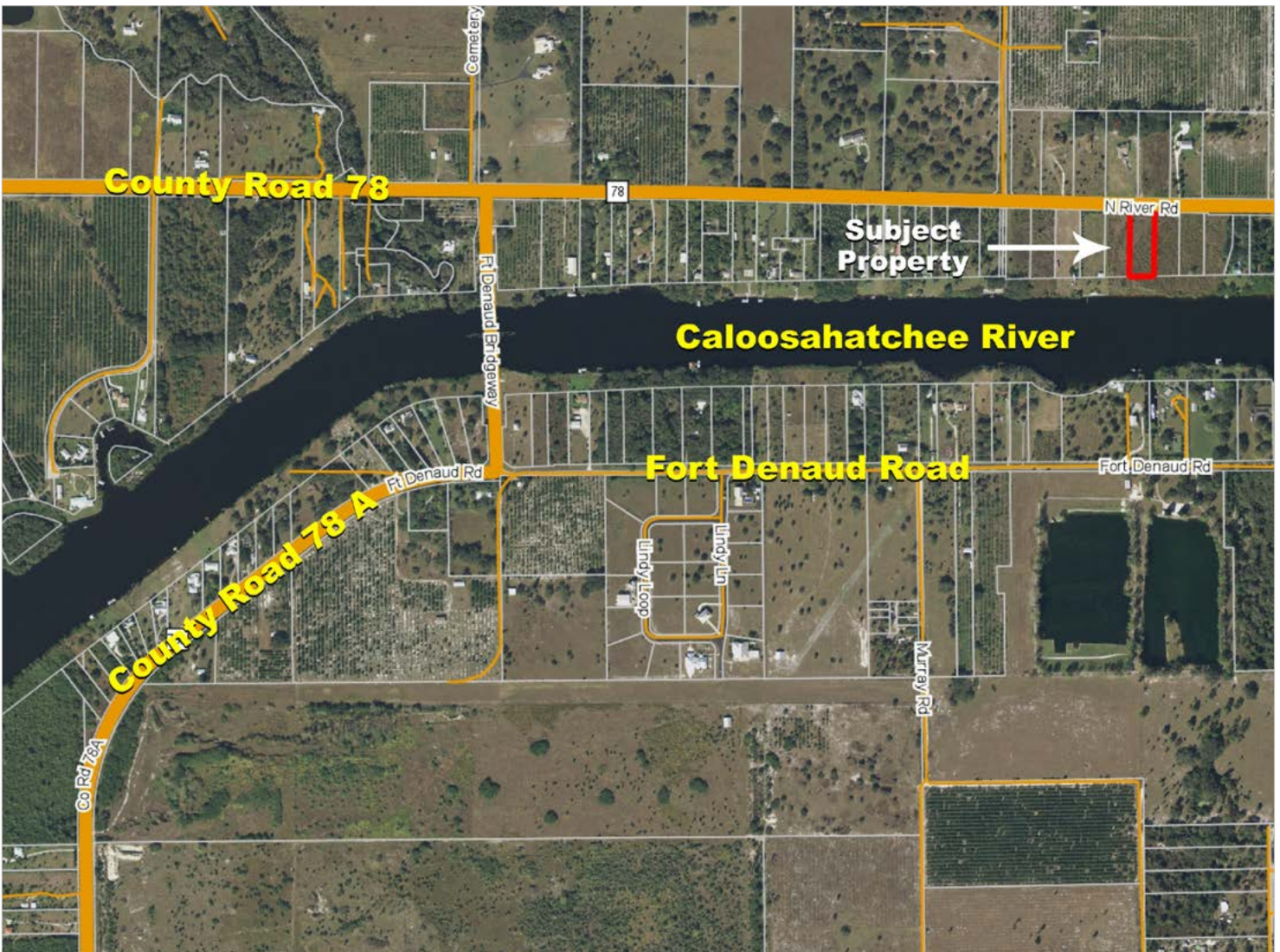
**GPS:** 26.7462904,-81.4978577

**Driving Directions:**

- From LaBelle, take SR 29 North for 0.98 miles.
- Turn left on to County Road 78 West for 5.17 miles.
- Property will be on the left.

Scenic River Frontage

Waterfront Living  
and Recreation





## Peaceful Homesite that Provides for a Boaters Paradise



## SREland.com/RiverfrontEast

Paul J. Meador, Associate Broker 863.692.3425 | [PMeador@SREland.com](mailto:PMeador@SREland.com)

Sara E. Catlett, CNE, CPRE 863.248.5053 | [SCatlett@SREland.com](mailto:SCatlett@SREland.com)

### LAKELAND OFFICE:

114 N. Tennessee Ave. 3rd Floor  
Lakeland, FL 33801  
863.648.1528 - Main Office

### HIGH SPRINGS OFFICE:

P.O. Box 809 (32655)  
18622 NW US 441  
High Springs, FL 32643

©2017 Coldwell Banker Commercial Saunders Real Estate. All rights Reserved. Worldwide. Every attempt is made to provide accurate information on this property, however, COLDWELL BANKER COMMERCIAL SAUNDERS REAL ESTATE (CBCSRE) does not guarantee the accuracy. Buyer should rely entirely on their own research, inspection of property, and records.  
©2017 Coldwell Banker Real Estate LLC, dba Coldwell Banker Commercial Affiliates. All Rights Reserved. Coldwell Banker Real Estate LLC, dba Coldwell Banker Commercial Affiliates fully supports the principles of the Equal Opportunity Act. Each Office is Independently Owned and Operated. Coldwell Banker Commercial and the Coldwell Banker Commercial Logo are registered service marks owned by Coldwell Banker Real Estate LLC, dba Coldwell Banker Commercial Affiliates.