



RIVERFRONT INTERCOASTAL WEST LOT

LABELLE, FL | HENDRY COUNTY

1.48 +/- ACRES



SPECIFICATIONS & FEATURES

Acreage: 1.48 +/- acres

Sale Price: \$130,000

Price per Acre: \$87,837.84

County: Hendry

Site Address: 3901 County Road 78, LaBelle, FL 33935

Road Frontage: County Road 78

Water Frontage: 150 +/- FT on the Caloosahatchee River

Soil Types: Tuscawilla Fine Sand

Land Cover: Grass

Uplands/Wetlands: 100% uplands

Zoning/FLU: 0000 - Vacant Residential

Current Use: Vacant residential

Annual Taxes: \$2,257 (2016)

Enjoy living your waterfront lifestyle on this 1.48 +/- acre Caloosahatchee Riverfront lot with beautiful views of the river and gorgeous sunset shows every evening.

This is the perfect peaceful location for your dream home with 150 +/- feet of river frontage. There is plenty of room for a dock to accommodate your pleasure boat or yacht with Intercoastal waterway access to the Gulf of Mexico and the Atlantic Ocean.

The adjoining 1.46 +/- acre lot to the East is also available, giving you just under 3 +/- acres with 300 +/- feet of riverfront.

Downtown LaBelle 6.2 miles

Within 30 minutes of
Downtown Fort Myers



LOCATION & DRIVING DIRECTIONS

Parcel IDs: 1 28 43 11 040 000B-005.0

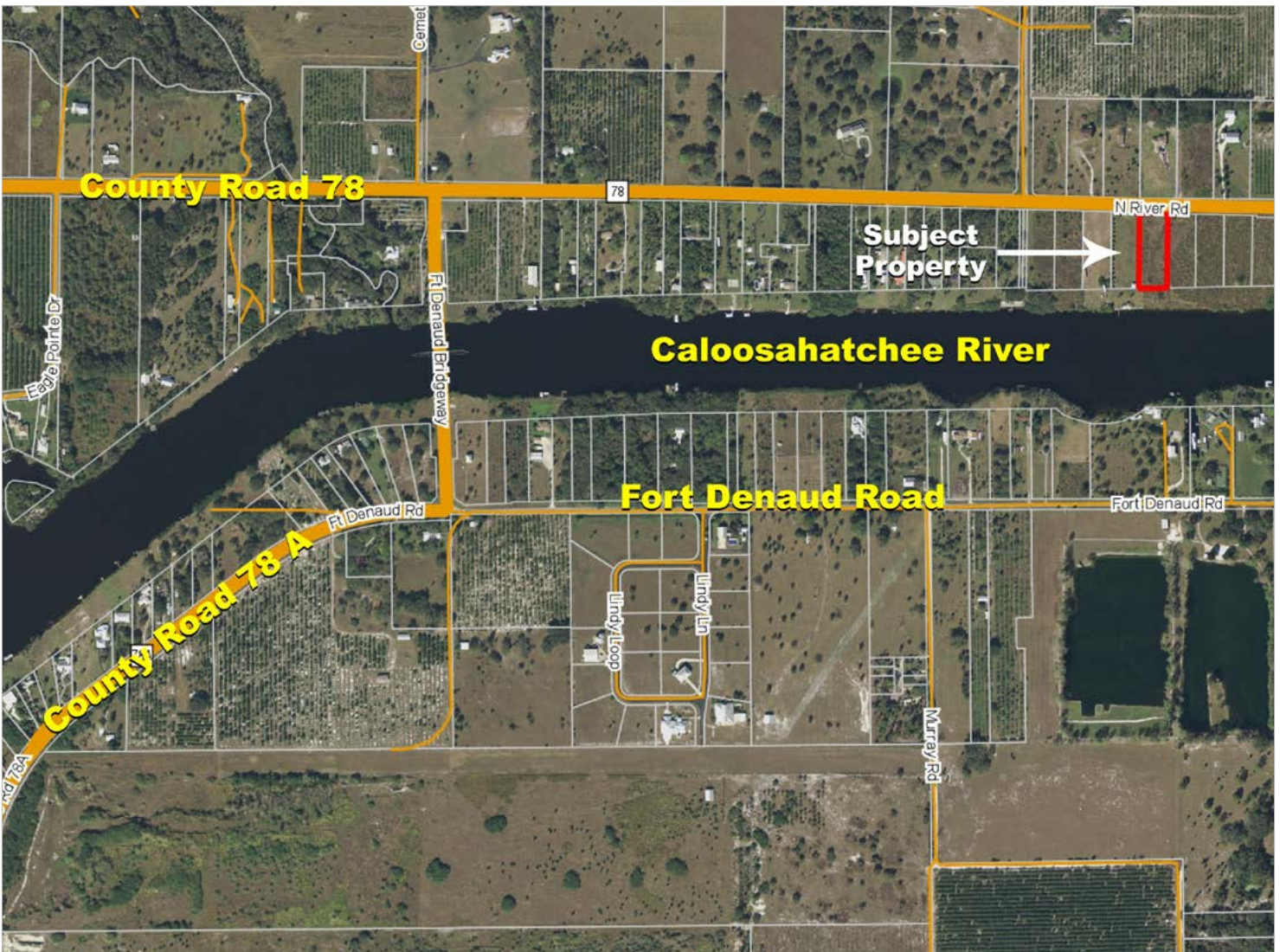
GPS: 26.7589942, -81.47183410000002

Driving Directions:

- From LaBelle, take SR 29 north for 0.98 miles.
- Turn left on to County Road 78 west for 5.17 miles.
- Property will be on the left.

Scenic River Frontage

Waterfront Living
and Recreation



Peaceful Homesite that Provides for a Boaters Paradise



SREland.com/RiverfrontWest

Paul J. Meador, Associate Broker 863.692.3425 | PMeador@SREland.com

Sara E. Catlett, CNE, CPRE 863.248.5053 | SCatlett@SREland.com

LAKELAND OFFICE:

114 N. Tennessee Ave. 3rd Floor
Lakeland, FL 33801
863.648.1528 - Main Office

HIGH SPRINGS OFFICE:

P.O. Box 809 (32655)
18622 NW US 441
High Springs, FL 32643

©2017 Coldwell Banker Commercial Saunders Real Estate. All rights Reserved. Worldwide. Every attempt is made to provide accurate information on this property, however, COLDWELL BANKER COMMERCIAL SAUNDERS REAL ESTATE (CBCSRE) does not guarantee the accuracy. Buyer should rely entirely on their own research, inspection of property, and records.
©2017 Coldwell Banker Real Estate LLC, dba Coldwell Banker Commercial Affiliates. All Rights Reserved. Coldwell Banker Real Estate LLC, dba Coldwell Banker Commercial Affiliates fully supports the principles of the Equal Opportunity Act. Each Office is Independently Owned and Operated. Coldwell Banker Commercial and the Coldwell Banker Commercial Logo are registered service marks owned by Coldwell Banker Real Estate LLC, dba Coldwell Banker Commercial Affiliates.