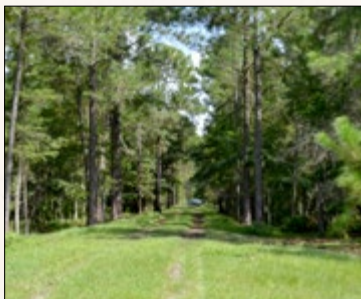


SOUTH LAKE COUNTY

80 +/- ACRES

Clermont FL • Lake County



SOUTH LAKE COUNTY 80 ACRES

Clermont, FL • Lake County



Acreage: 84.38 +/- acres

Sale Price: \$405,024

Price per Acre: \$4,800

County: Lake

Site Address: Clermont, FL

Soil Types: Myakka Sand, Placid Sand, Tavares Sand, Wauchula Sand

Uplands/Wetlands:

- Uplands 75.29 +/- acres
- Wetlands 9.09 +/- acres

Land Cover: Cropland, pastureland

Fencing: Fenced

Current Use: Cattle grazing, pasture

Taxes: \$453.33 (2014)

Parcel IDs: 192425000300003200, 192425000300003100, 192425000300003300,

GPS: 28.37999, -81.84923

Driving Directions:

- From Clermont, take US 27, go south to CR 474 W
- Take SR 33 and go north to Oil Well Road W
- Take Alligator Road south
- Property will start about 1/4 mile south of Oil Well Road



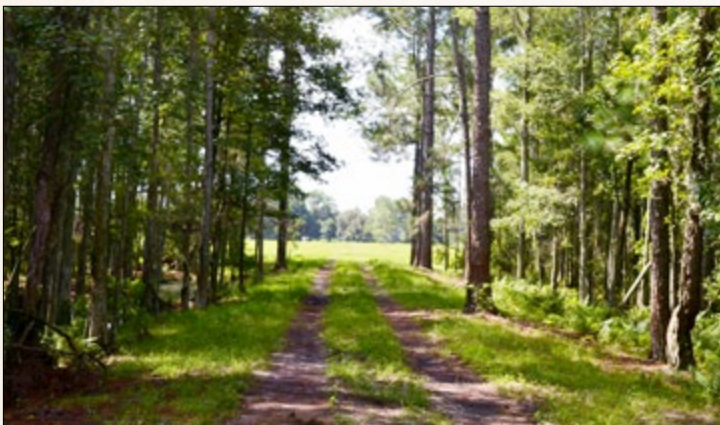
1.5 +/- Miles East to SR 33

9 +/- Miles East to US 27

14 +/- Miles North to Clermont

16 +/- Miles South to I-4 & Polk City

21 +/- Miles to Florida's Turnpike



Pasture! & Cattle Grazing

For additional details, go to:

SREland.com/SouthLakeCo80



114 N. Tennessee Ave., 3rd Floor
Lakeland, FL 33801
863.648.1528 - Main Office
P.O. Box 809, High Springs, FL 32655
18622 NW US 441
High Springs, FL 32643
SREland.com

Bo Jahna

863.800.0332 • BoJahna@SREland.com

Richard Dempsey, ALC

863.774.3548 • Richard@SREland.com



©2017 Coldwell Banker Commercial Saunders Real Estate. All rights Reserved. Worldwide. Every attempt is made to provide accurate information on this property, however, COLDWELL BANKER COMMERCIAL SAUNDERS REAL ESTATE (CBCSRE) does not guarantee the accuracy. Buyer should rely entirely on their own research, inspection of property, and records.

©2017 Coldwell Banker Real Estate LLC, dba Coldwell Banker Commercial Affiliates. All Rights Reserved. Coldwell Banker Real Estate LLC, dba Coldwell Banker Commercial Affiliates fully supports the principles of the Equal Opportunity Act. Each Office is Independently Owned and Operated. Coldwell Banker Commercial and the Coldwell Banker Commercial Logo are registered service marks owned by Coldwell Banker Real Estate LLC, dba Coldwell Banker Commercial Affiliates.

052517-A