

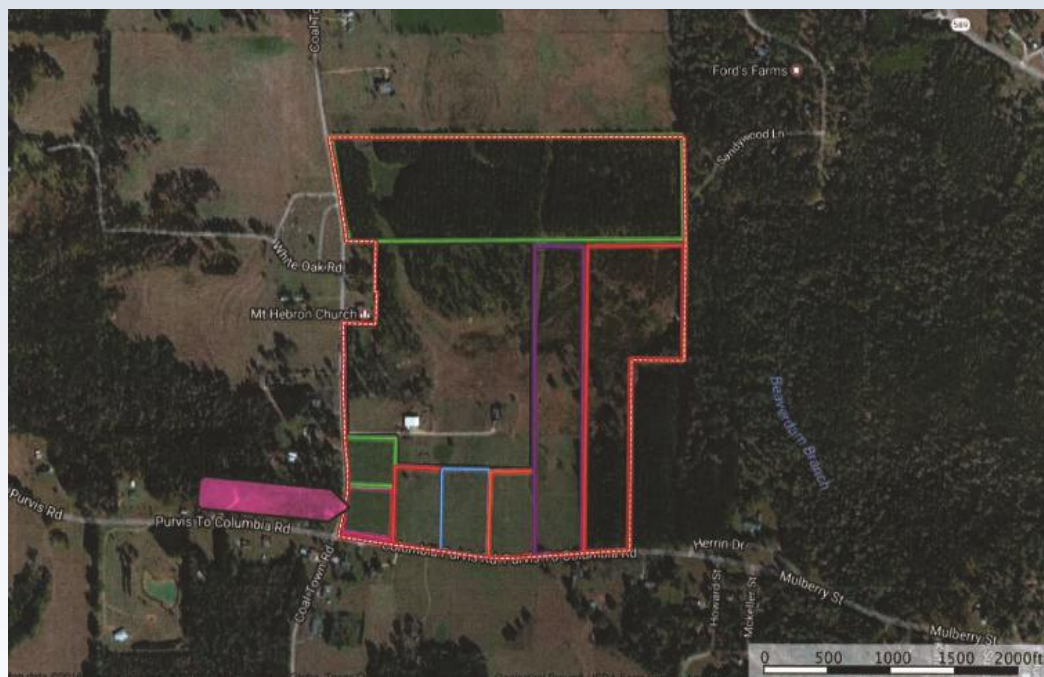


3 acre lot at the intersection of Purvis to Columbia Road and Coal Town Road. Prime location and part of a larger tract of land being developed. This will be the ideal location to build your home you have always dreamed of while having the peaceful serenity of country living. Seller restricts mobile homes, modular homes, travel trailers, or any movable structure.

212 Cole Town Road, Purvis

31.148750/-89.432274 GPS

- Lamar County
- Purvis Schools
- Road Frontage
- Close to Downtown
- Country Setting
- Close to major Hwy
- 30 Minutes to Hattiesburg
- Additional Acreage Available
- Great Home-sites



\$45,000

3 Acres
MLS #109148
UC #23002-09148



David Daughdrill
daughdrill.david@gmail.com
Office: (601) 250-0017
Cell: (601) 307-5925
gibsonrealtyms.com