

LA - Madison Ratcliff 35 acres +/-

35.0 Acres
\$335,000.00



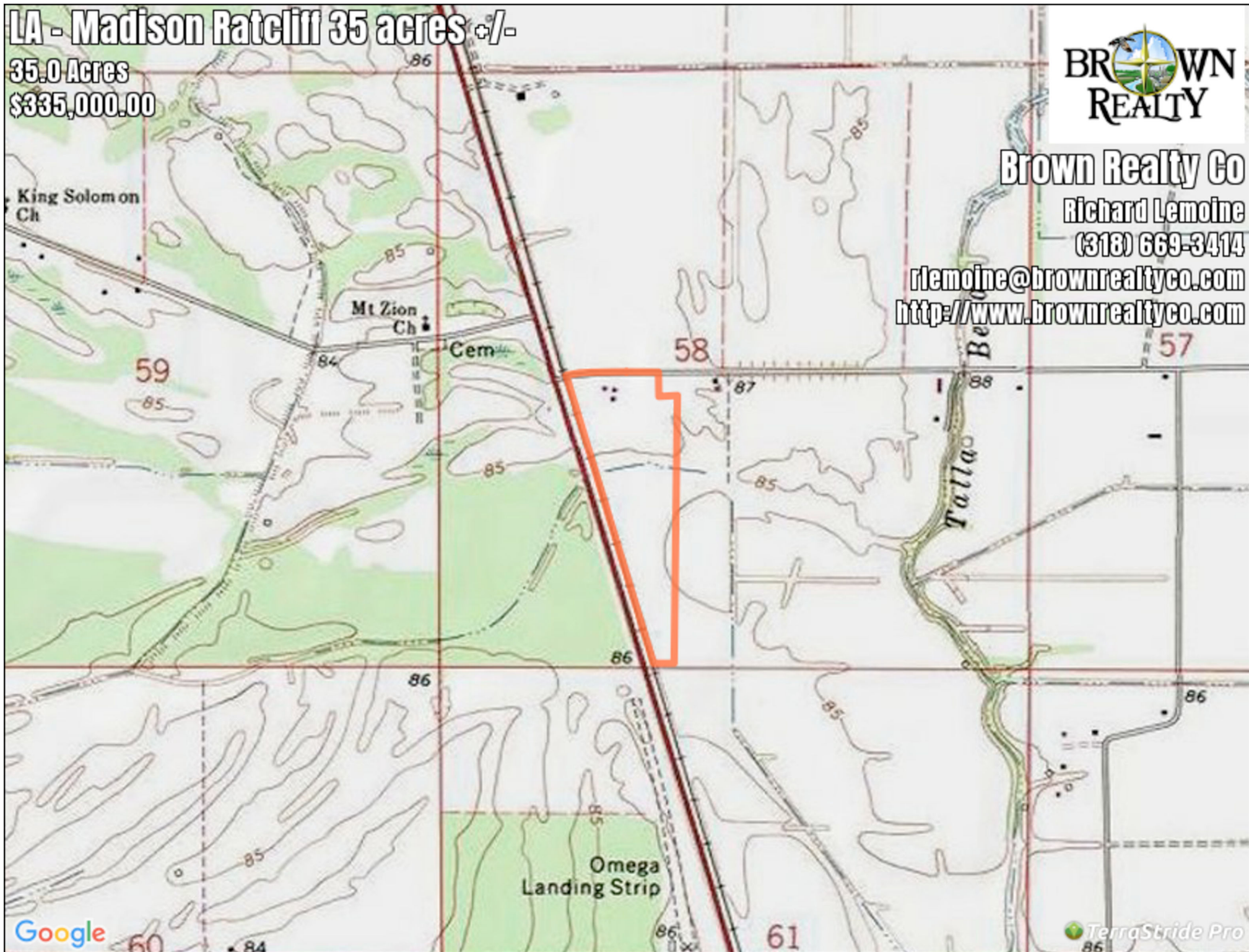
Brown Realty Co

Richard Lemoine

(318) 669-3414

rlemoine@brownrealtyco.com

<http://www.brownrealtyco.com>



LA - Madison Ratcliff 35 acres +/-

Legend

 Boundary

Description

Very nice house, 1800 sq ft, 2 bedrooms, 2 baths on 35 acres. Nice enclosed back porch. Includes a metal shed on a slab. Small pecan orchard loaded up with pecans. Deer are known to feed in the orchard and yard. CRP payments on 28.5 acres through 09/30/2024. 20X25 metal building on slab with 500 sq ft of covered area attached. Close to Mississippi River Levee. Brown Realty CO Jerry Brown Broker 2189 Hwy 425 Rayville LA 71269 318-728-9544

DISCLAIMER: The information contained herein is as obtained by this broker from sellers, owners, or other sources. This information is considered reliable, neither this broker nor owners make any guarantee, warranty or representation as to correctness of any data or descriptions and the accuracy of such statements. The correctness and / or accuracy of any and all statements should be determined through independent investigation made by the prospective purchaser. Any offer for sale is subject to prior sale, errors and omissions, change of price, terms or other conditions or withdrawal from sale in whole or in part, by seller without notice and at the sole discretion of seller. Readers are urged to form their own independent conclusions and evaluations in consultation with legal counsel, accountants, and/or investment advisors concerning and all material contained herein.

Generated on: Sept. 7, 2017