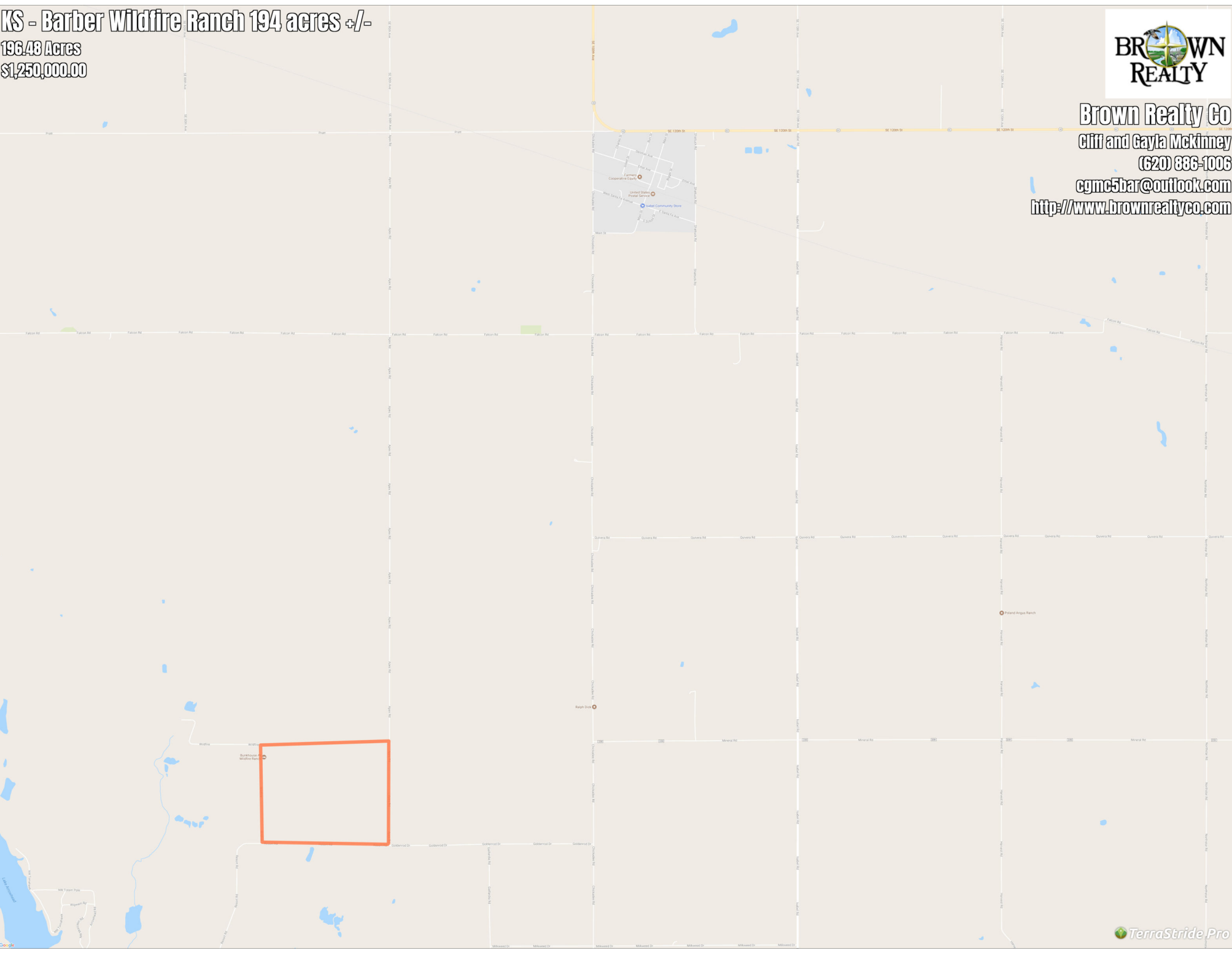


KS - Barber Wildfire Ranch 194 acres +/-
196.43 Acres
\$1,250,000.00



Brown Realty Co
Cliff and Gayla McKinney
(620) 886-1006
cymc5bar@outlook.com
<http://www.brownrealtyco.com>



KS - Barber Wildfire Ranch 194 acres +/-

Legend

 Boundary

Description

This is a very well maintained high end bed & breakfast with amazing income potential, with hunting and wildlife viewing. Repeat customers everything in place to immediately start making income, with unlimited potential. Brown Realty Co Jerry Brown Broker 2189 Hwy 425 Rayville LA 71269 318-728-9544

DISCLAIMER: The information contained herein is as obtained by this broker from sellers, owners, or other sources. This information is considered reliable, neither this broker nor owners make any guarantee, warranty or representation as to correctness of any data or descriptions and the accuracy of such statements. The correctness and / or accuracy of any and all statements should be determined through independent investigation made by the prospective purchaser. Any offer for sale is subject to prior sale, errors and omissions, change of price, terms or other conditions or withdrawal from sale in whole or in part, by seller without notice and at the sole discretion of seller. Readers are urged to form their own independent conclusions and evaluations in consultation with legal counsel, accountants, and/or investment advisors concerning and all material contained herein.

Generated on: Sept. 14, 2017