

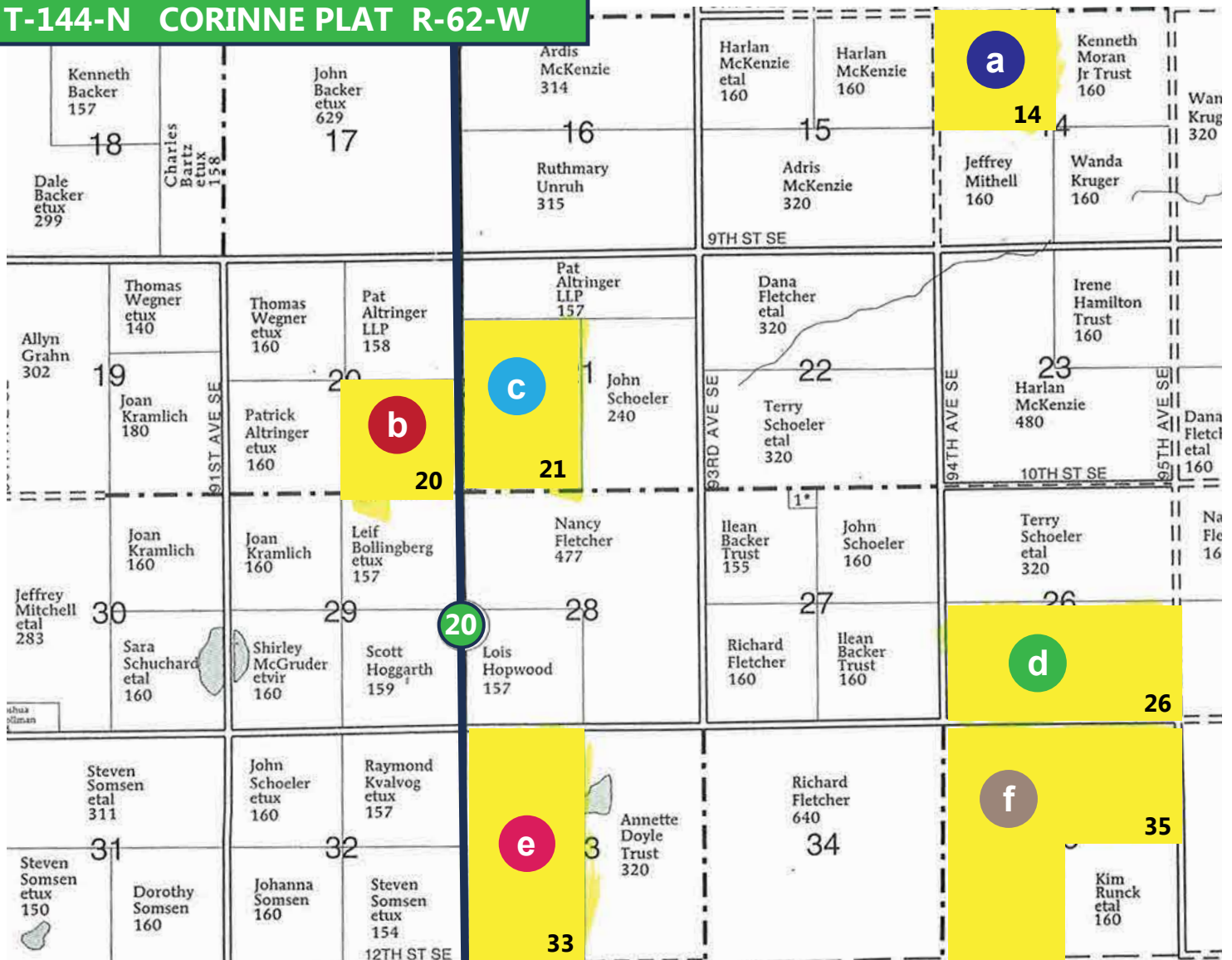


Stutsman, ND
FARM LAND FOR SALE
1662.48 Acres



Steve Johnson
701-799-5213

T-144-N CORINNE PLAT R-62-W



Directions: From Courtney North Dakota take Hwy 20 or 92nd Ave SE NE of Courtney 1 mile to 12th St SE. You are now at the SW corner of Section 33-144-62

Total Acres 1662.48
Tillable Acres 1635.99
Total 2016 Discounted Net R.E. Taxes \$10,240.06

Stutsman County ND Farm Land For Sale

NW 1/4 Section 14-144-62

Approximately 160.00 Acres

a



Total Acres 160.00
Tillable Acres 156.87
2016 Discounted Net R.E. Taxes \$1273.15
Weighted Average Productivity 73.8%
2014 weighted average productivity 82%



*All information contained herein is believed to be true but should be verified to the buyer's satisfaction in case of error, typographical or otherwise. All information is subject to change without further notice.

Steve D. Johnson
Real Estate Broker
Auctioneer License #976
701-799-5213
steve@johnsonauctionandrealty.com



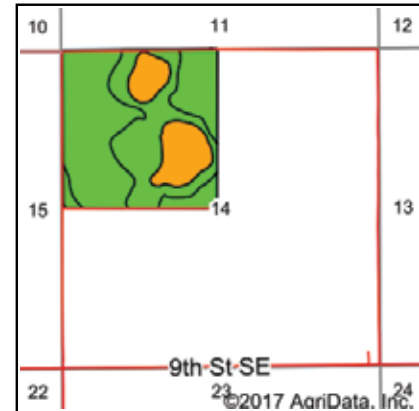
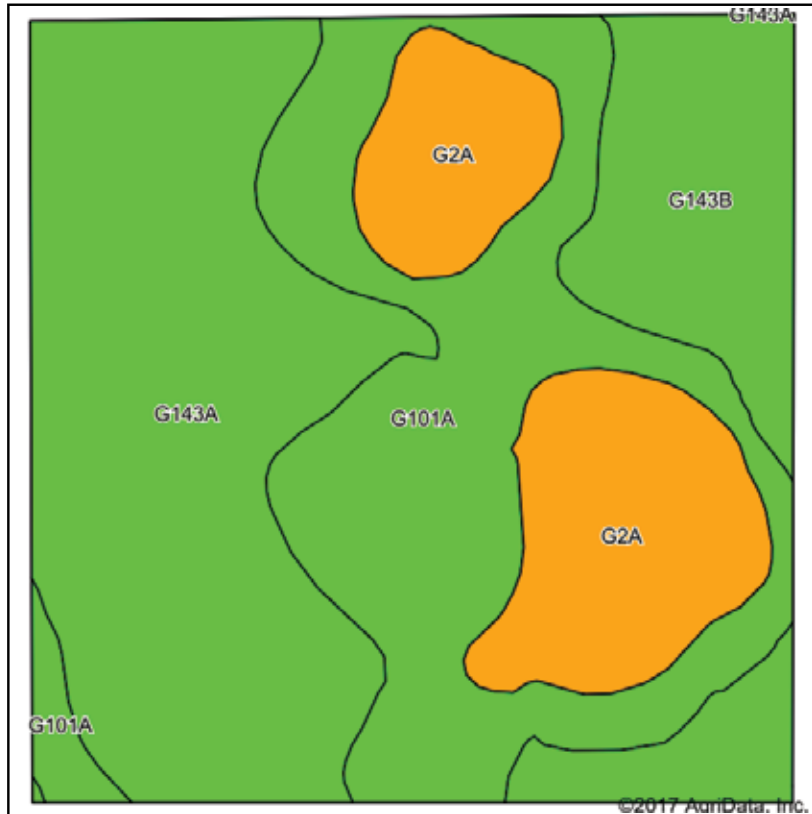
3137 32nd Ave S, Ste 211 | Fargo, ND 58103
www.johnsonauctionandrealty.com

Stutsman County ND Farm Land For Sale

NW 1/4 Section 14-144-62

Approximately 160.00 Acres

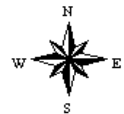
a



State: **North Dakota**
 County: **Stutsman**
 Location: **14-144N-62W**
 Township: **Corinne**
 Acres: **156.87**
 Date: **9/25/2017**



Map Provided By:



Soils data provided by USDA and NRCS.

Area Symbol: ND093, Soil Area Version: 19

Code	Soil Description	Acres	Percent of field	PI Legend	NonIrr Class *c	Productivity Index	NCCPI Overall
G143A	BarnesSvea loams, 0 to 3 percent slopes	63.69	40.6%		IIc	85	43
G101A	HamerlyWyand loams, 0 to 3 percent slopes	46.89	29.9%		Ile	77	37
G2A	Tonka silt loam, 0 to 1 percent slopes	27.73	17.7%		IVw	42	30
G143B	BarnesSvea loams, 3 to 6 percent slopes	18.56	11.8%		Ile	75	42
Weighted Average						73.8	38.8

*c: Using Capabilities Class Dominant Condition Aggregation Method

Soils data provided by USDA and NRCS.



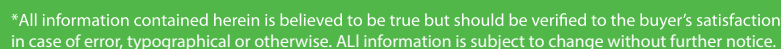
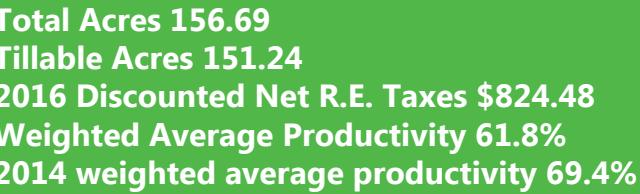
*All information contained herein is believed to be true but should be verified to the buyer's satisfaction in case of error, typographical or otherwise. All information is subject to change without further notice.

Steve D. Johnson
 Real Estate Broker
 Auctioneer License #976
 701-799-5213
 steve@johnsonauctionandrealty.com

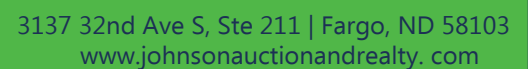


3137 32nd Ave S, Ste 211 | Fargo, ND 58103
 www.johnsonauctionandrealty.com

b



steve@johnsonauctionandrealty.com

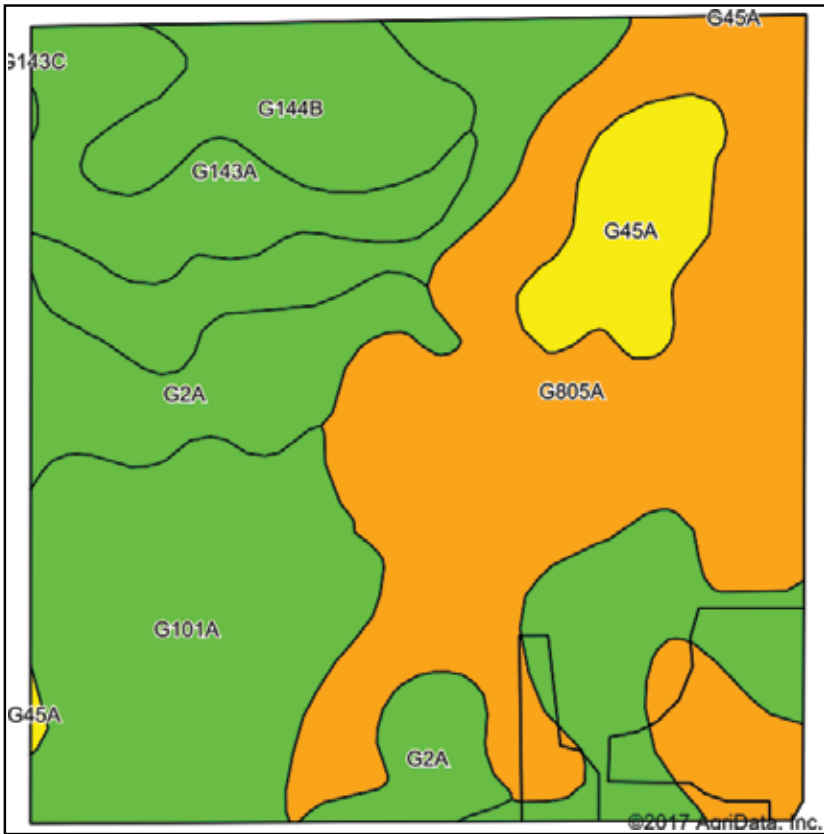


Stutsman County ND Farm Land For Sale

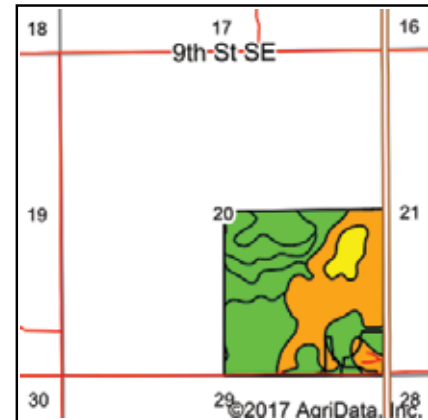
SE 1/4 Section 20-144-62

Approximately 156.69 Acres

b



Soils data provided by USDA and NRCS.



State: **North Dakota**
 County: **Stutsman**
 Location: **20-144N-62W**
 Township: **Corinne**
 Acres: **160.65**
 Date: **9/25/2017**



Maps Provided By:



Archived Soils Ending 11/6/2014

Area Symbol: ND093, Soil Area Version: 16

Code	Soil Description	Acres	Percent of field	PI Legend	NonIrr Class *c	Productivity Index	*n NCCPI Overall
G805A	BeardenColvin silt loams, saline, 0 to 2 percent slopes	57.32	35.7%		IIIw	52	14
G101A	HamerlyWyard loams, 0 to 3 percent slopes	54.06	33.7%		IIe	82	28
G2A	Tonka silt loam, 0 to 1 percent slopes	15.88	9.9%		IIw	76	13
G143A	BarnesSvea loams, 0 to 3 percent slopes	12.62	7.9%		IIc	86	35
G144B	BarnesBuse loams, 3 to 6 percent slopes	11.91	7.4%		IIe	72	32
G45A	Colvin silty clay loam, 0 to 1 percent slopes	8.86	5.5%		IIw	67	23
Weighted Average						69.4	*n 22.1

*n: NCCPI updated on 1-25-2016

*c: Using Capabilities Class Dominant Condition Aggregation Method

Soils data provided by USDA and NRCS.



*All information contained herein is believed to be true but should be verified to the buyer's satisfaction in case of error, typographical or otherwise. All information is subject to change without further notice.

Steve D. Johnson

Real Estate Broker

Auctioneer License #976

701-799-5213

steve@johnsonauctionandrealty.com



3137 32nd Ave S, Ste 211 | Fargo, ND 58103

www.johnsonauctionandrealty.com

Stutsman County ND Farm Land For Sale

S 1/2 NW,SW 1/4 Section 21-144-62

Approximately 234.11 Acres

C



Total Acres 234.11
Tillable Acres 228.25
2016 Discounted Net R.E. Taxes 1192.18
Weighted Average Productivity 62.2%
2014 weighted average productivity 67.9%



*All information contained herein is believed to be true but should be verified to the buyer's satisfaction in case of error, typographical or otherwise. ALL information is subject to change without further notice.

Steve D. Johnson
Real Estate Broker
Auctioneer License #976
701-799-5213
steve@johnsonauctionandrealty.com



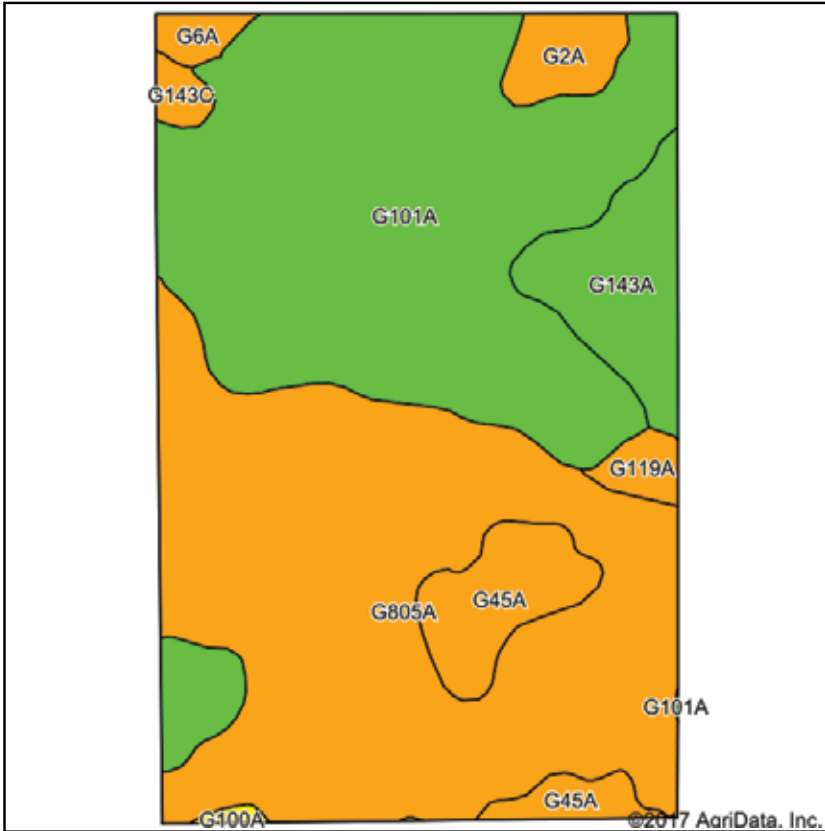
3137 32nd Ave S, Ste 211 | Fargo, ND 58103
www.johnsonauctionandrealty.com

Stutsman County ND Farm Land For Sale

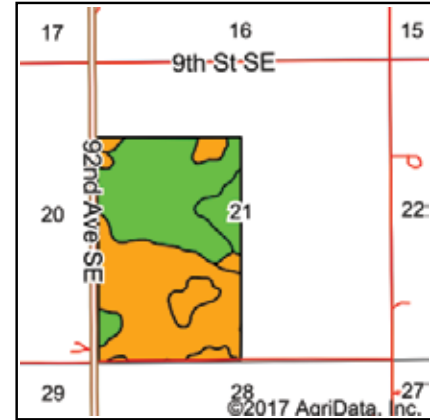
S 1/2 NW,SW 1/4 Section 21-144-62

Approximately 234.11 Acres

C



Soils data provided by USDA and NRCS.



State: **North Dakota**
 County: **Stutsman**
 Location: **21-144N-62W**
 Township: **Corinne**
 Acres: **228.25**
 Date: **9/25/2017**



Maps Provided By:



Area Symbol: ND093, Soil Area Version: 19

Code	Soil Description	Acres	Percent of field	PI Legend	NonIrr Class *c	Productivity Index	NCCPI Overall
G805A	BeardenColvin silt loams, saline, 0 to 2 percent slopes	96.48	42.3%		IVw	49	14
G101A	HamerlyWyard loams, 0 to 3 percent slopes	93.41	40.9%		Ile	77	37
G143A	BarnesSvea loams, 0 to 3 percent slopes	13.67	6.0%		IIc	85	43
G45A	Colvin silty clay loam, 0 to 1 percent slopes	12.86	5.6%		IVw	45	27
G2A	Tonka silt loam, 0 to 1 percent slopes	4.97	2.2%		IVw	42	30
G119A	VallersHamerly loams, saline, 0 to 3 percent slopes	2.54	1.1%		IVw	45	15
G6A	Vallers loam, 0 to 1 percent slopes	2.06	0.9%		IVw	46	35
G143C	BarnesBuseLanghei loams, 6 to 9 percent slopes	1.74	0.8%		IVe	55	38
G100A	HamerlyTonka complex, 0 to 3 percent slopes	0.52	0.2%		Ile	64	32
Weighted Average						62.2	26.7

*c: Using Capabilities Class Dominant Condition Aggregation Method

Soils data provided by USDA and NRCS.



*All information contained herein is believed to be true but should be verified to the buyer's satisfaction in case of error, typographical or otherwise. All information is subject to change without further notice.

Steve D. Johnson
 Real Estate Broker
 Auctioneer License #976
 701-799-5213
 steve@johnsonauctionandrealty.com



3137 32nd Ave S, Ste 211 | Fargo, ND 58103
 www.johnsonauctionandrealty.com

Stutsman County ND Farm Land For Sale

South 1/2 Section 26-144-62

Approximately 320.00 Acres

d



Total Acres 320.00
Tillable Acres 305.15
2016 Discounted Net R.E. Taxes \$1864.95
Weighted Average productivity 62.4%
2014 weighted average productivity 67.4%

94th Ave SE

95th Ave SE

11th St SE



*All information contained herein is believed to be true but should be verified to the buyer's satisfaction in case of error, typographical or otherwise. ALL information is subject to change without further notice.

Steve D. Johnson
Real Estate Broker
Auctioneer License #976
701-799-5213
steve@johnsonauctionandrealty.com



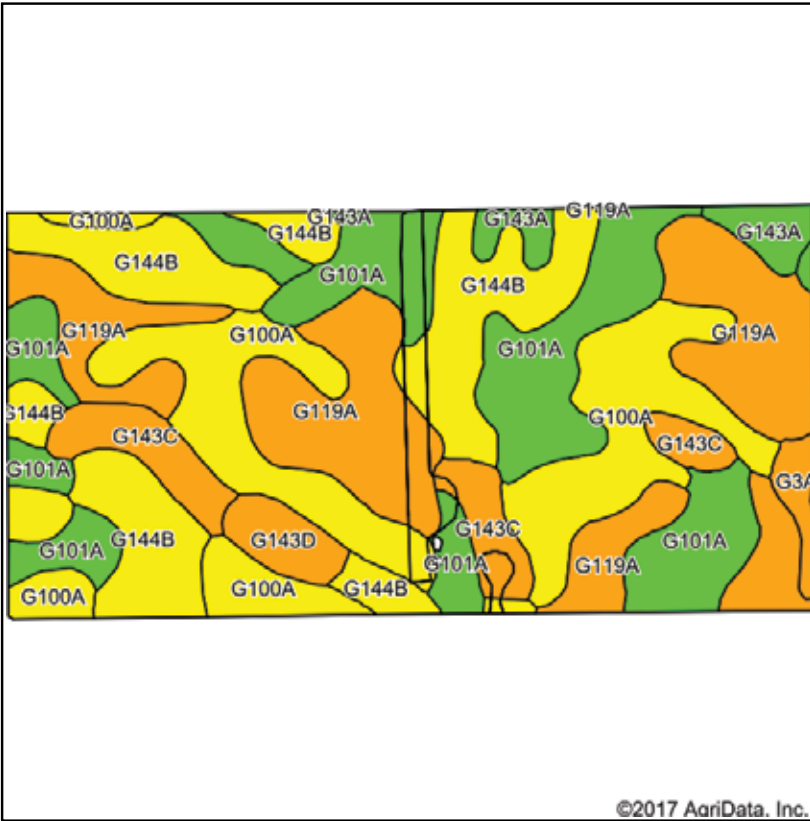
3137 32nd Ave S, Ste 211 | Fargo, ND 58103
www.johnsonauctionandrealty.com

Stutsman County ND Farm Land For Sale

South 1/2 Section 26-144-62

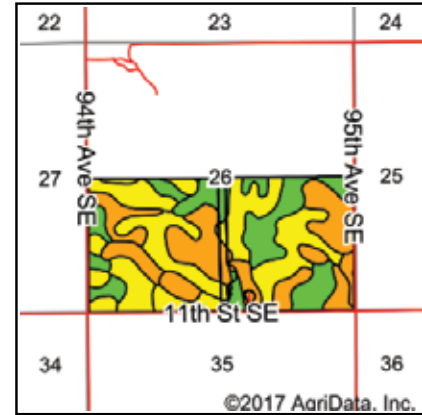
Approximately 320.00 Acres

d



Soils data provided by USDA and NRCS.

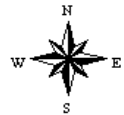
©2017 AgriData, Inc.



State: **North Dakota**
 County: **Stutsman**
 Location: **26-144N-62W**
 Township: **Corinne**
 Acres: **315.33**
 Date: **9/25/2017**



Maps Provided By:



Area Symbol: ND093, Soil Area Version: 19

Code	Soil Description	Acres	Percent of field	PI Legend	NonIrr Class *c	Productivity Index	NCCPI Overall
G119A	VallersHamery loams, saline, 0 to 3 percent slopes	75.40	23.9%		IVw	45	15
G100A	HameryTonka complex, 0 to 3 percent slopes	71.00	22.5%		Ile	64	32
G101A	HameryWyard loams, 0 to 3 percent slopes	65.05	20.6%		Ile	77	37
G144B	BarnesBuse loams, 3 to 6 percent slopes	61.32	19.4%		IIle	69	39
G143C	BarnesBuseLanghei loams, 6 to 9 percent slopes	19.77	6.3%		IVe	55	38
G143A	BarnesSvea loams, 0 to 3 percent slopes	12.21	3.9%		IIc	85	43
G143D	BarnesBuseLanghei loams, 9 to 15 percent slopes	6.80	2.2%		VIe	41	36
G3A	Parnell silty clay loam, 0 to 1 percent slopes	3.78	1.2%		Vw	25	20
Weighted Average						62.4	31.1

*c: Using Capabilities Class Dominant Condition Aggregation Method

Soils data provided by USDA and NRCS.



*All information contained herein is believed to be true but should be verified to the buyer's satisfaction in case of error, typographical or otherwise. All information is subject to change without further notice.

Steve D. Johnson
 Real Estate Broker
 Auctioneer License #976
 701-799-5213
 steve@johnsonauctionandrealty.com



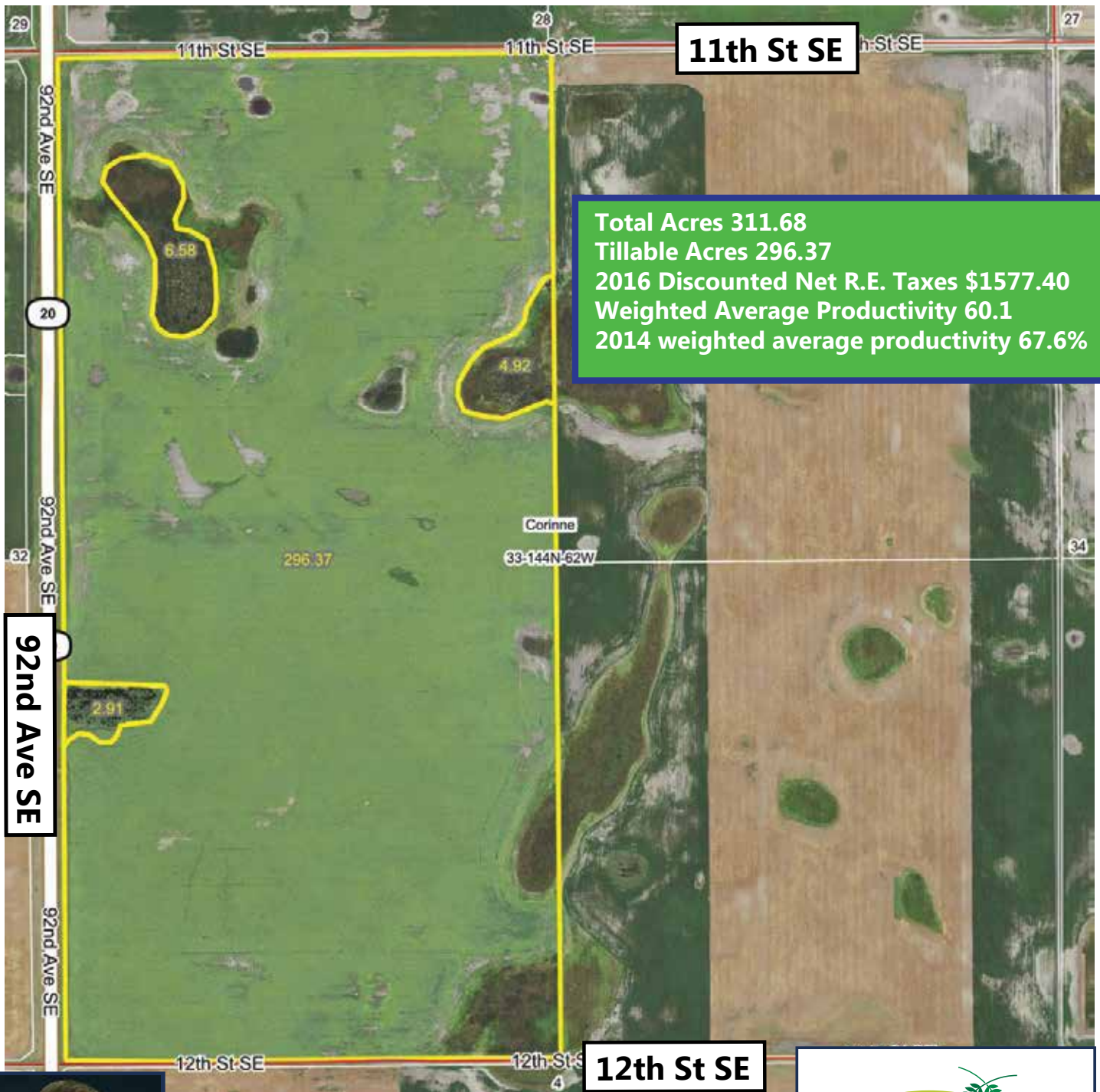
3137 32nd Ave S, Ste 211 | Fargo, ND 58103
 www.johnsonauctionandrealty.com

Stutsman County ND Farmland For Sale

W 1/2 Section 33-144-62

Approximately 311.38 Acres

e



*All information contained herein is believed to be true but should be verified to the buyer's satisfaction in case of error, typographical or otherwise. All information is subject to change without further notice.

Steve D. Johnson
Real Estate Broker
Auctioneer License #976
701-799-5213
steve@johnsonauctionandrealty.com



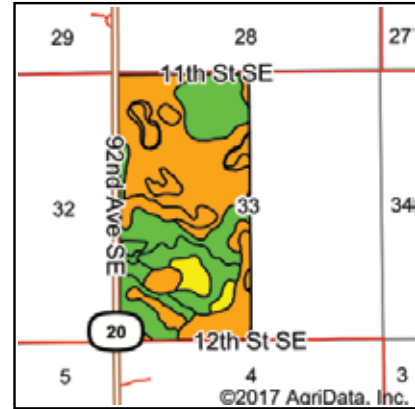
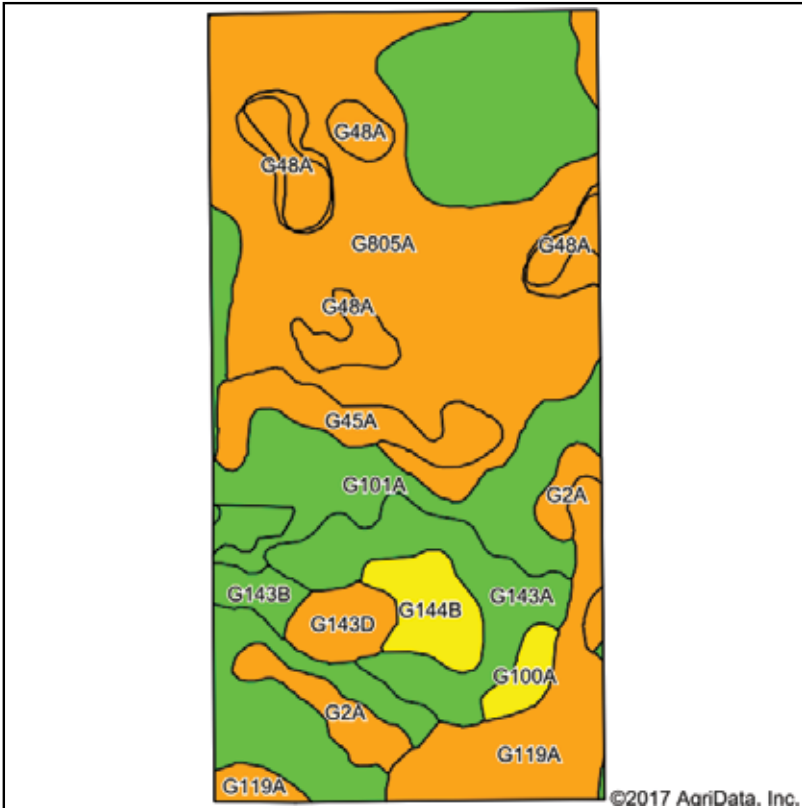
3137 32nd Ave S, Ste 211 | Fargo, ND 58103
www.johnsonauctionandrealty.com

Stutsman County ND Farmland For Sale

W 1/2 Section 33-144-62

Approximately 311.38 Acres

e



State: **North Dakota**
 County: **Stutsman**
 Location: **33-144N-62W**
 Township: **Corinne**
 Acres: **310.78**
 Date: **9/25/2017**



Maps Provided By



surety
 CUSTOMER ONLINE MAPPING

© AgriData, Inc. 2017

www.AgrDataInc.com



Soils data provided by USDA and NRCS.

Area Symbol: ND093, Soil Area Version: 19

Code	Soil Description	Acres	Percent of field	PI Legend	NonIrr Class *c	Productivity Index	NCCPI Overall
G805A	BeardenColvin silt loams, saline, 0 to 2 percent slopes	101.89	32.8%		IVw	49	14
G101A	HamerlyWyand loams, 0 to 3 percent slopes	91.56	29.5%		Ile	77	37
G119A	VallersHamerly loams, saline, 0 to 3 percent slopes	27.50	8.8%		IVw	45	15
G143A	BarnesSvea loams, 0 to 3 percent slopes	24.11	7.8%		Ilc	85	43
G48A	Lindaas silt loam, 0 to 1 percent slopes	17.08	5.5%		IVw	46	30
G45A	Colvin silty clay loam, 0 to 1 percent slopes	13.06	4.2%		IVw	45	27
G2A	Tonka silt loam, 0 to 1 percent slopes	11.04	3.6%		IVw	42	30
G144B	BarnesBuse loams, 3 to 6 percent slopes	9.58	3.1%		Ille	69	39
G143D	BarnesBuseLanghei loams, 9 to 15 percent slopes	6.88	2.2%		Vle	41	36
G143B	BarnesSvea loams, 3 to 6 percent slopes	4.10	1.3%		Ile	75	42
G100A	HamerlyTonka complex, 0 to 3 percent slopes	3.98	1.3%		Ile	64	32
Weighted Average						60.1	27

*c: Using Capabilities Class Dominant Condition Aggregation Method

Soils data provided by USDA and NRCS.



*All information contained herein is believed to be true but should be verified to the buyer's satisfaction in case of error, typographical or otherwise. All information is subject to change without further notice.

Steve D. Johnson
 Real Estate Broker
 Auctioneer License #976
 701-799-5213
 steve@johnsonauctionandrealty.com



3137 32nd Ave S, Ste 211 | Fargo, ND 58103
 www.johnsonauctionandrealty.com

Stutsman County ND Farm Land For Sale

N 1/2 and SW 1/4 Section 35-144-62

Approximately 480.00 Acres

f



Total Acres 480.00
Tillable Acres 471.79
2016 Discounted net R.E. Taxes \$3507.90
Weighted Average productivity 71.4%
2014 Weighted Average Productivity 77.2

95th Ave SE

12th St SE



*All information contained herein is believed to be true but should be verified to the buyer's satisfaction in case of error, typographical or otherwise. All information is subject to change without further notice.

Steve D. Johnson
Real Estate Broker
Auctioneer License #976
701-799-5213
steve@johnsonauctionandrealty.com

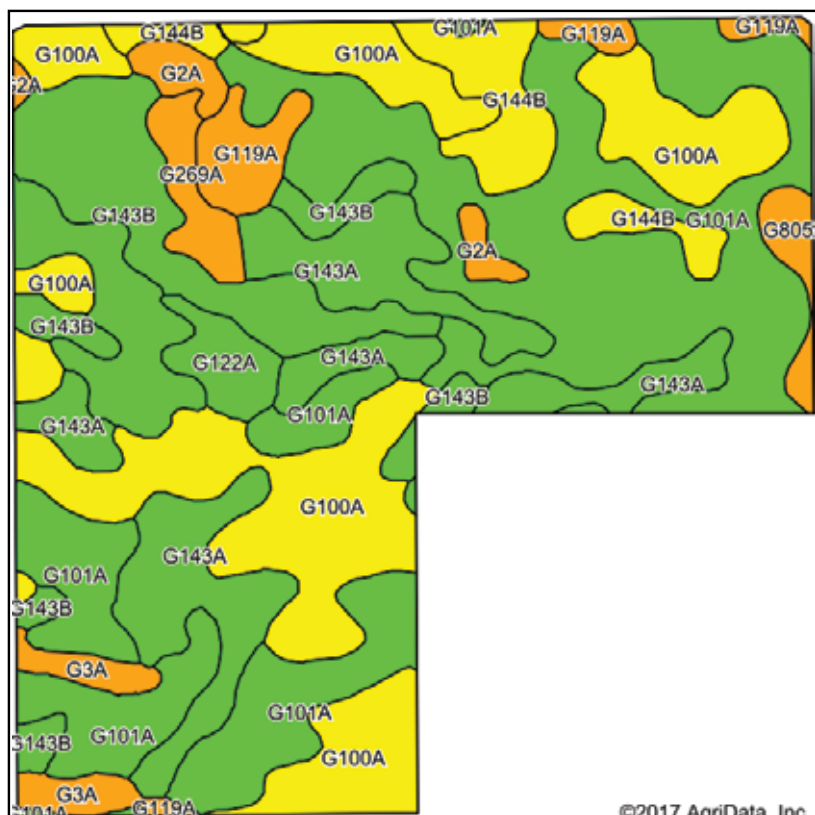


3137 32nd Ave S, Ste 211 | Fargo, ND 58103
www.johnsonauctionandrealty.com

Stutsman County ND Farm Land For Sale

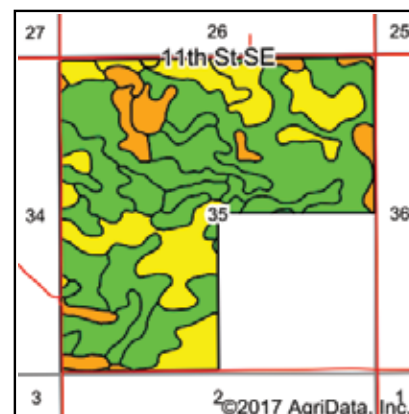
N 1/2 and SW 1/4 Section 35-144-62

Approximately 480.00 Acres



Soils data provided by USDA and NRCS.

©2017 AgriData, Inc.



State: **North Dakota**
 County: **Stutsman**
 Location: **35-144N-62W**
 Township: **Corinne**
 Acres: **472.58**
 Date: **9/25/2017**



Maps Provided By:



© AgriData, Inc. 2017 www.Agridatainc.com



Area Symbol: ND093, Soil Area Version: 19

Code	Soil Description	Acres	Percent of field	PI Legend	NonIrr Class *c	Productivity Index	NCCPI Overall
G101A	HamerlyWyard loams, 0 to 3 percent slopes	179.07	37.9%		Ile	77	37
G100A	HamerlyTonka complex, 0 to 3 percent slopes	105.65	22.4%		Ile	64	32
G143A	BarnesSvea loams, 0 to 3 percent slopes	63.93	13.5%		Ilc	85	43
G143B	BarnesSvea loams, 3 to 6 percent slopes	48.17	10.2%		Ile	75	42
G144B	BarnesBuse loams, 3 to 6 percent slopes	22.59	4.8%		Ille	69	39
G119A	VallersHamerly loams, saline, 0 to 3 percent slopes	14.31	3.0%		IVw	45	15
G3A	Parnell silty clay loam, 0 to 1 percent slopes	8.56	1.8%		Vw	25	20
G269A	FordvilleRenshaw loams, 0 to 2 percent slopes	8.50	1.8%		Ills	54	29
G122A	SveaCresbard loams, 0 to 3 percent slopes	8.43	1.8%		Ilc	79	34
G2A	Tonka silt loam, 0 to 1 percent slopes	7.69	1.6%		IVw	42	30
G805A	BeardenColvin silt loams, saline, 0 to 2 percent slopes	5.68	1.2%		IVw	49	14
Weighted Average						71.4	35.7

*c: Using Capabilities Class Dominant Condition Aggregation Method

Soils data provided by USDA and NRCS.



*All information contained herein is believed to be true but should be verified to the buyer's satisfaction in case of error, typographical or otherwise. All information is subject to change without further notice.

Steve D. Johnson
 Real Estate Broker
 Auctioneer License #976
 701-799-5213
 steve@johnsonauctionandrealty.com



3137 32nd Ave S, Ste 211 | Fargo, ND 58103
 www.johnsonauctionandrealty.com

a Section 14

Total Acres 160.00
Tillable Acres 156.87
2016 Discounted Net R.E. Taxes \$1273.15
Weighted Average Productivity 73.8%
2014 weighted average productivity 82%

d Section 26

Total Acres 320.00
Tillable Acres 305.15
2016 Discounted Net R.E. Taxes \$1864.95
Weighted Average productivity 62.4%
2014 weighted average productivity 67.4%

b Section 20

Total Acres 156.69
Tillable Acres 151.24
2016 Discounted Net R.E. Taxes \$824.48
Weighted Average Productivity 61.8%
2014 weighted average productivity 69.4%

e Section 33

Total Acres 311.68
Tillable Acres 296.37
2016 Discounted Net R.E. Taxes \$1577.40
Weighted Average Productivity 60.1
2014 weighted average productivity 67.6%

c Section 21

Total Acres 234.11
Tillable Acres 228.25
2016 Discounted Net R.E. Taxes 1192.18
Weighted Average Productivity 62.2%
2014 weighted average productivity 67.9%

f Section 35

Total Acres 480.00
Tillable Acres 471.79
2016 Discounted net R.E. Taxes \$3507.90
Weighted Average productivity 71.4%
2014 Weighted Average Productivity 77.2

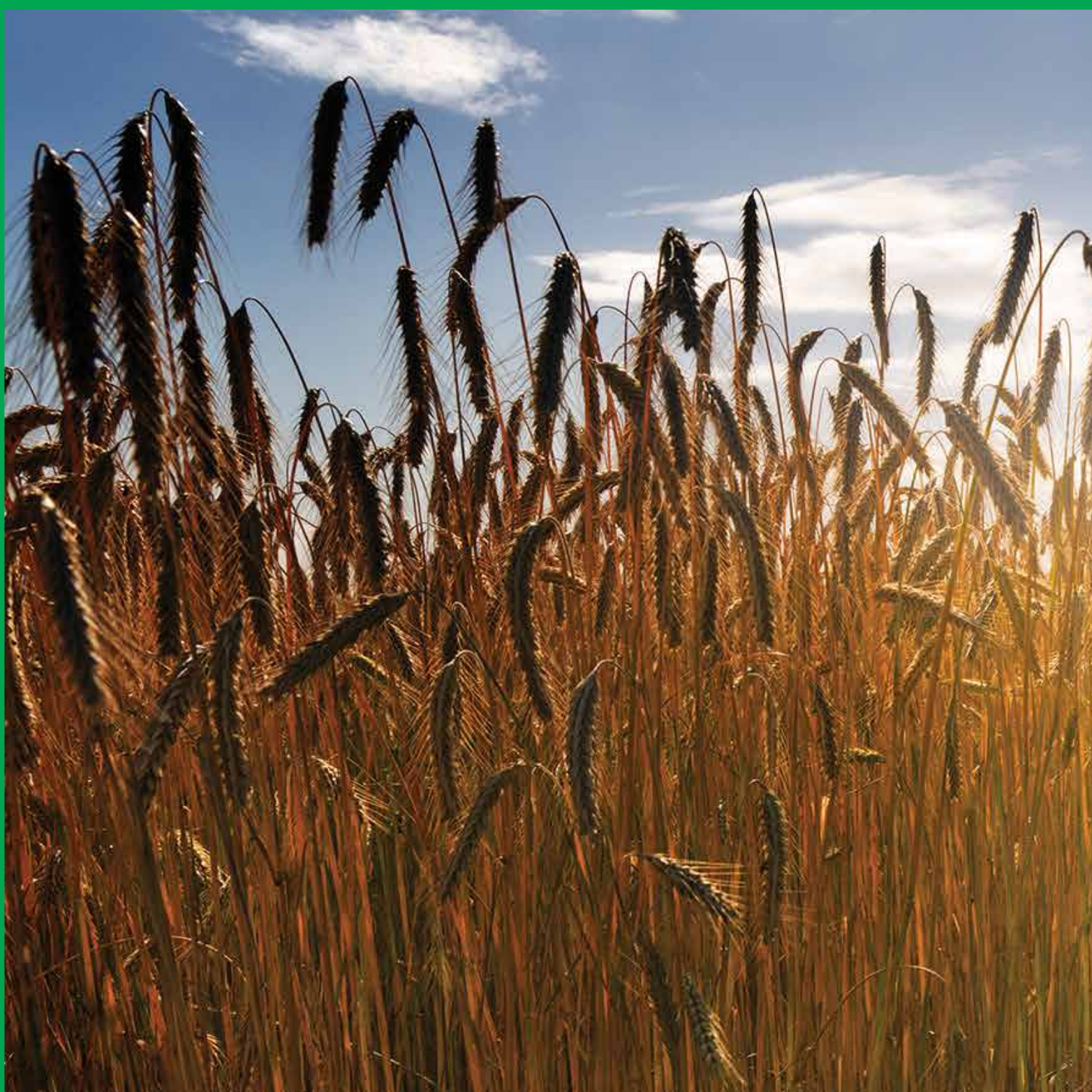
Total Acres 1662.48
Tillable Acres 1635.99
Total 2016 Discounted Net R.E. Taxes \$10,240.06



*All information contained herein is believed to be true but should be verified to the buyer's satisfaction in case of error, typographical or otherwise. All information is subject to change without further notice.

Steve D. Johnson
Real Estate Broker
Auctioneer License #976
701-799-5213
steve@johnsonauctionandrealty.com

3137 32nd Ave S, Ste 211 | Fargo, ND 58103
www.johnsonauctionandrealty.com



701-799-5213
steve@johnsonauctionandrealty.com

3137 32nd Ave S, Ste 211 | Fargo, ND 58103
www.johnsonauctionandrealty.com

