

LAND FOR SALE

Cherry County Rangeland



Location:

From Thedford, Nebraska the property is 16 miles north on Hwy 83 or approximately 5 miles south of the Brownlee turnoff, then 1 1/2 miles west on Eatinger Ranch Road then south 1/2 mile.

Legal Description:

S1/2S1/2 Section 22; All Section 27; E1/2E1/2 Section 28; E1/2NE1/4 Section 33; N1/2 Section 34 together with a recorded access easement across Section 22 in T26N-R28W of the 6th P.M., Cherry County, Nebraska.

Acres:

1,360 tax assessed acres

Taxes:

2016 taxes payable in 2017 - \$5,100

Land Use:

Property is entirely Sandhills rangeland watered by 3 windmills with bottomless tanks.

Price:

\$1,060,000 Price Reduced!

Comments:

This is a very nice, typical Sandhills range property cross-fenced into two pastures.

Contact:

Dallas Dodson; Listing Agent 402-376-1707 or dallas@agriaffiliates.com
John Childears, Mike Polk, Tony Eggleston, Chase Dodson, Don Walker,
Roger Luehrs, Bruce Dodson, Brian Reynolds

Agri Affiliates—Providing Farm, Ranch Real Estate Services



Dallas Dodson,
Listing Agent

Offered Exclusively By:



AGRI AFFILIATES, INC.
Providing Farm - Ranch Real Estate Services

NORTH PLATTE OFFICE

P.O. Box 1166

I-80 & US Hwy 83

North Platte, NE 69103

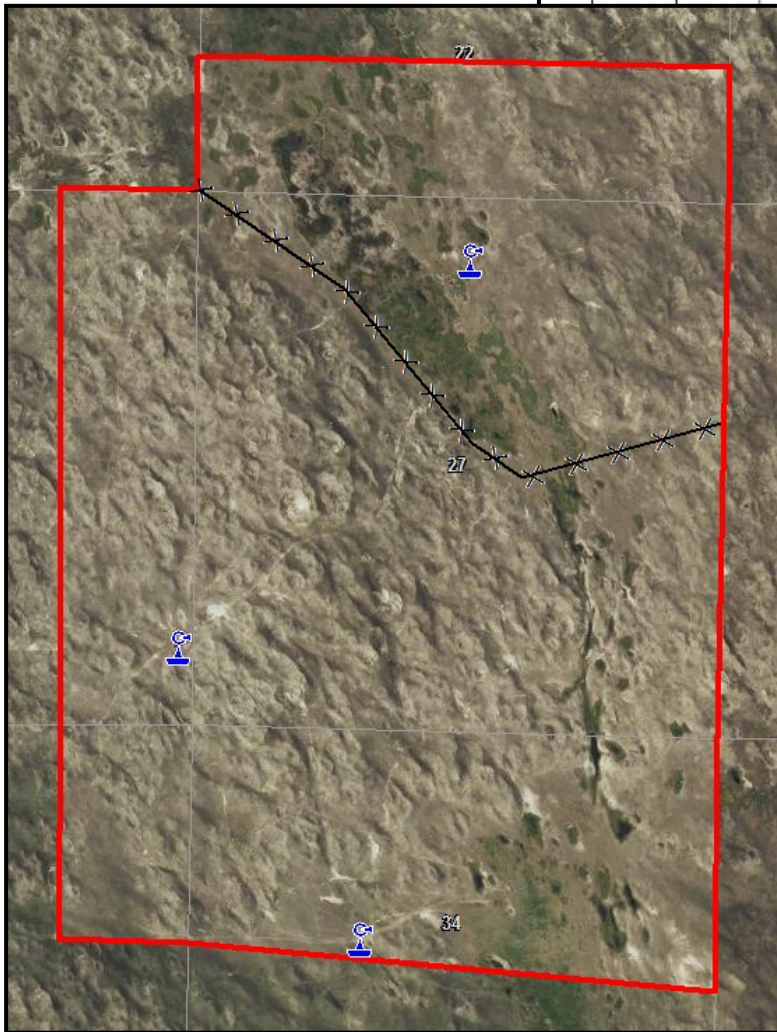
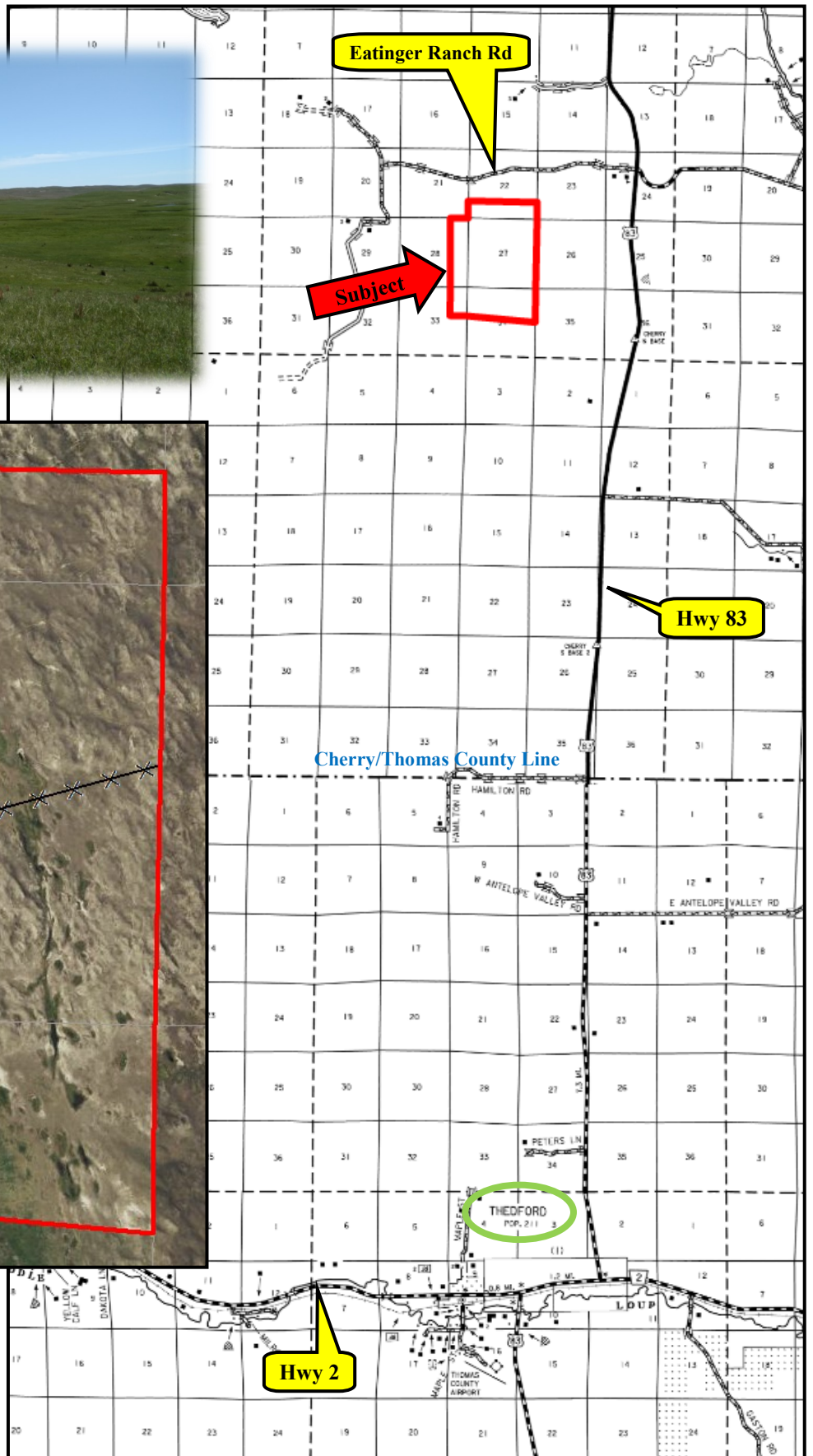
www.agriaffiliates.com

(308) 534-9240

Fax (308) 534-9244

Information contained herein was obtained from sources deemed reliable. We have no reason to doubt the accuracy, but the information is not guaranteed. Prospective Buyers should verify all information. All maps provided by Agri Affiliates, Inc. are approximations only, to be used as a general guideline, and not intended as survey accurate. As with any agricultural land, this property may include noxious weeds. Agri Affiliates, Inc. and all agents are acting as Agent of the Seller.





AGRI AFFILIATES, INC.
Providing Farm - Ranch Real Estate Services