

Sonny Todd Real Estate

*301 West First, P.O. Box 788, Big Timber, MT 59011
(406) 932-6668 or (406) 932-LAND Fax: (406) 932-4838
info@sonnytoddrealestate.com ~ www.sonnnytoddrealestate.com
Toll Free: (866) 932-1031*



Hwy 191 Commercial

Big Timber, Montana

\$175,000.

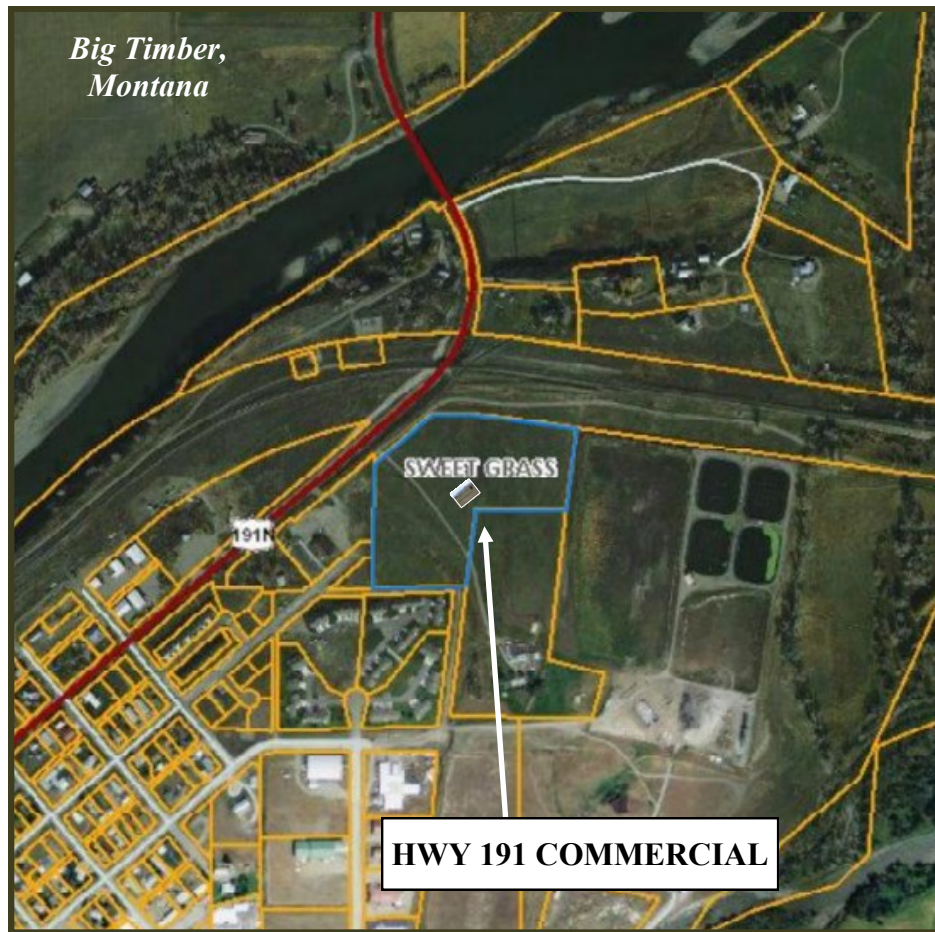


11.310+/- commercial acres located on Highway 191 on the outskirts of town . Great views of the Crazy and the Beartooth Mountain Ranges.



Logan Todd
(406) 930-3673

Big Timber has much to offer as a small comfortable Montana town.



BIG TIMBER: Located at the confluence of the Yellowstone and Boulder River, Big Timber is the Sweet Grass County seat and services as the support system to the areas cattle ranching community and recreation industry. Big Timber features a school system which offers K-12, a hospital, clinic, nursing home, Assisted Living, optometrist, dentist, car dealership, beauty shops, a quilt shop, golf course, churches, grocery and clothing stores, museums, art galleries, establishments offering fine food from the nationally acclaimed dining at "The Grand Hotel", to casual meals at the Frosty Freez, motels, bed and breakfasts, movie theater, bowling alley and a paved airport capable of facilitating most any private aircraft.

