

FOR SALE

Potential Industrial Site

**610 Galilee Church Road
Jefferson, GA 30549**



Land Available

**Marketed By:
Otis Rylee
Associate**

**O:770.532.9911
F:770.535.6622**

www.simpsoncompany.com

— THE —
SIMPSON
— COMPANY —
REAL ESTATE

PROPERTY INFORMATION

Potential Industrial Site

Jefferson, GA



610 Galilee Church Road
Jefferson, GA 30549

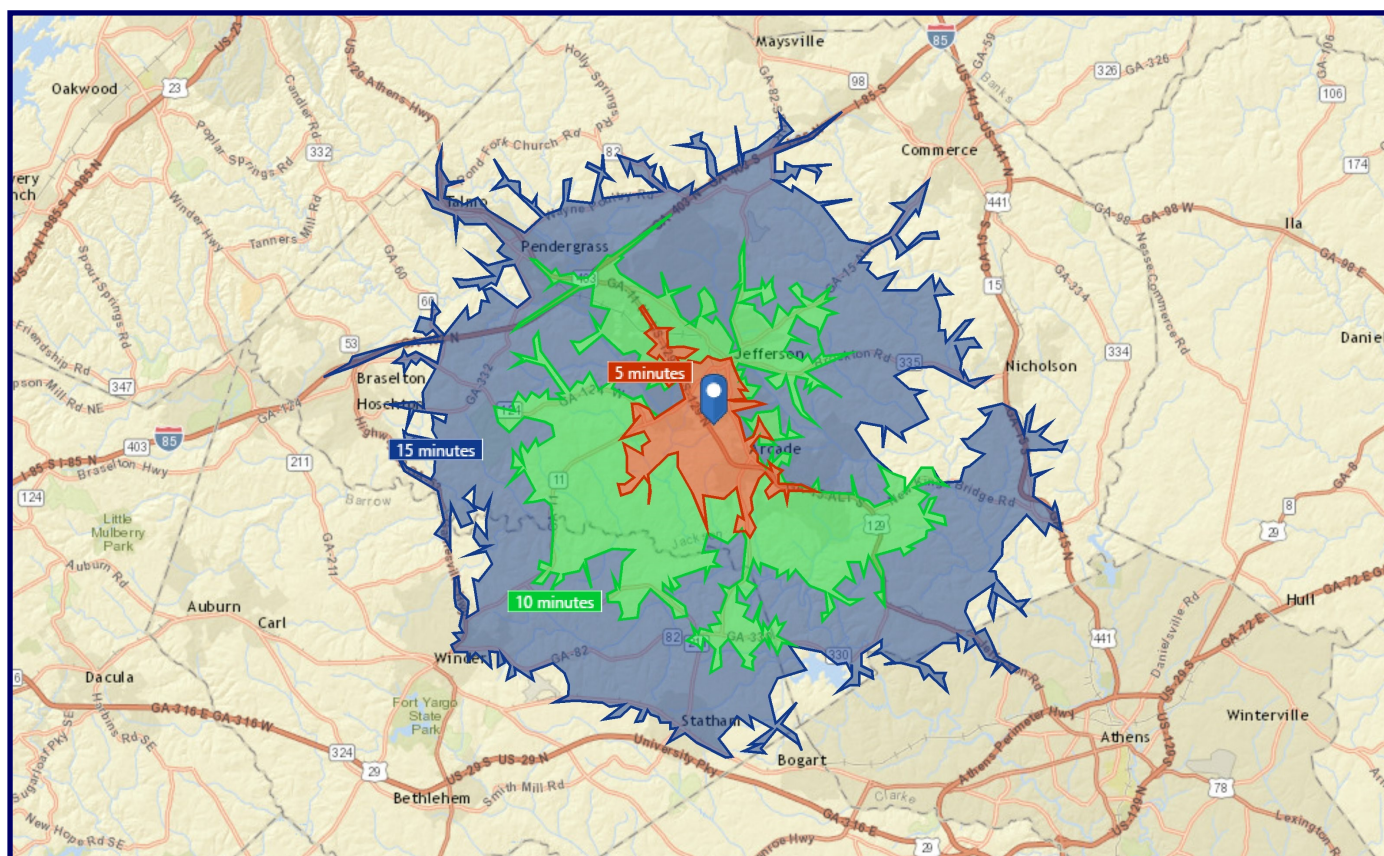
Property Highlights:

- 15.92+/- Acres for sale
- Dual road frontage
- Located adjacent to Central Jackson Industrial Park
- 1/4 mile to Highway 129 bypass
- Six miles to I-85 Exit 137 (Jefferson/Pendergrass)
- 15 miles to Athens, 21 miles to Gainesville
- Gently sloping topography
- Sewer, power, water & gas are all available
- Easy rezoning for industrial utilization
- Owner is motivated to sell - Bring all offers!

Asking Price: \$299,000 or \$18,800/Acre

DRIVE TIME MAP (5,10,15min)

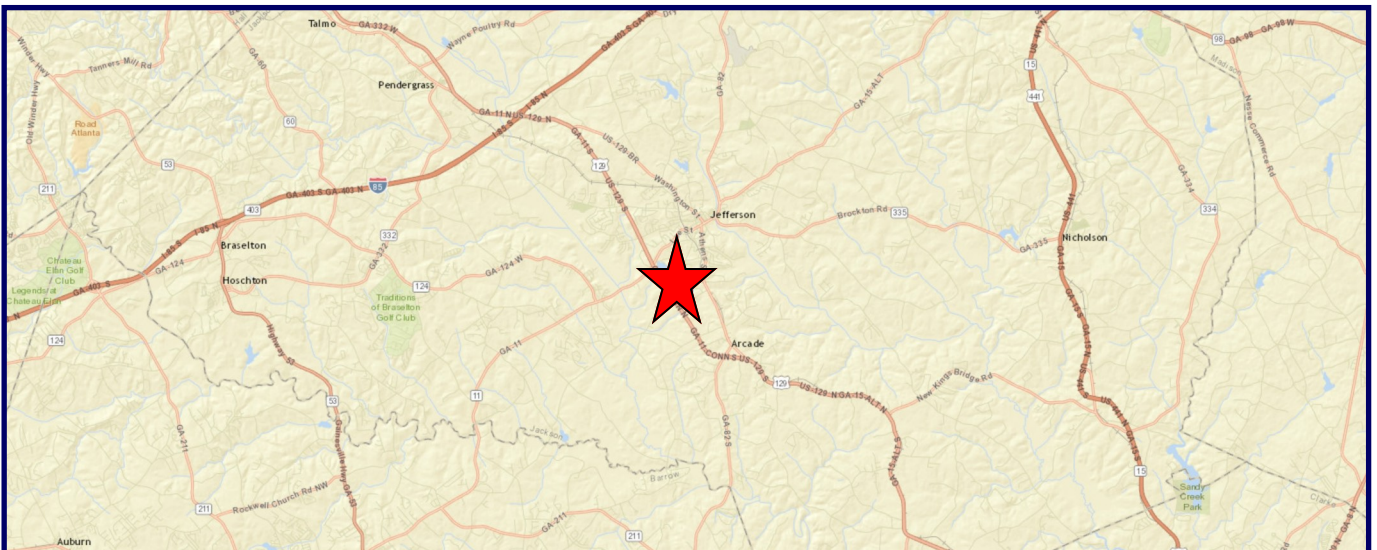
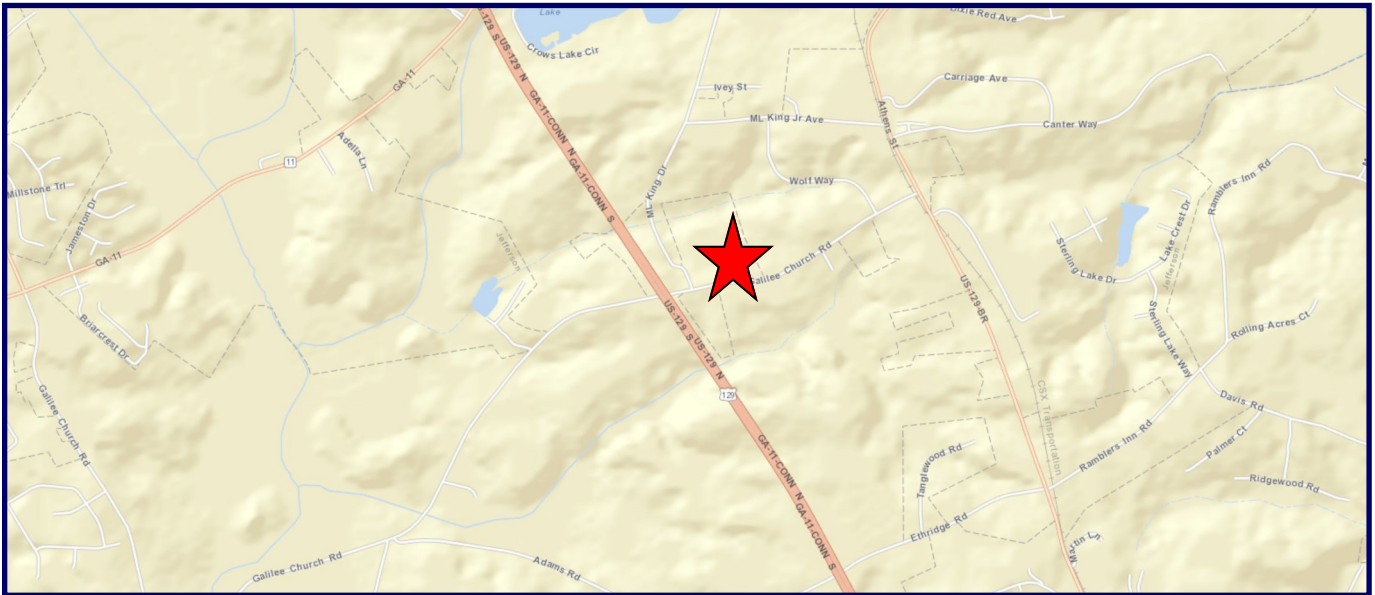
Potential Industrial Site Jefferson, GA



All information furnished is from sources deemed reliable, but information has not been verified and is subject to errors and omissions.

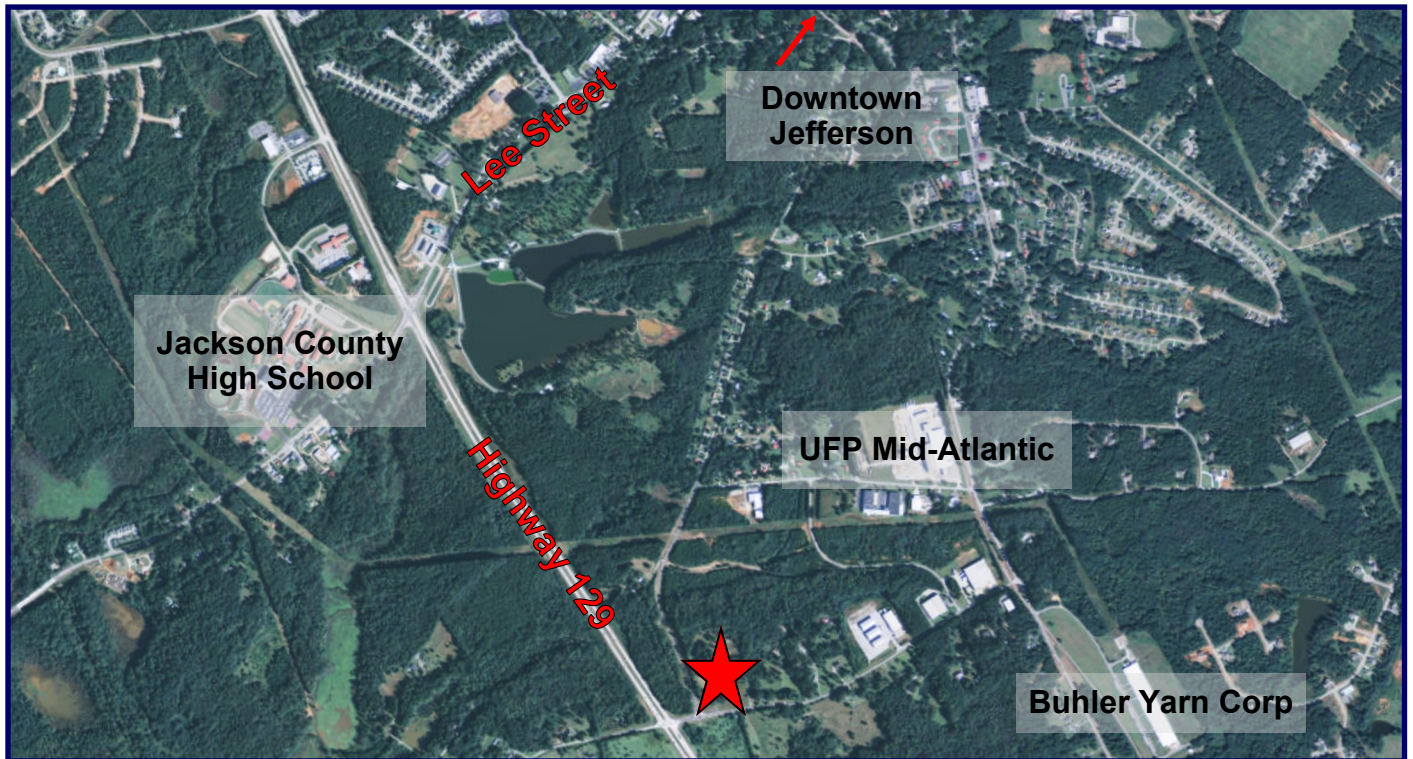
LOCATION MAP

Potential Industrial Site Jefferson, GA



LOCATION MAP

Potential Industrial Site Jefferson, GA



BROKER PROFILE

THE SIMPSON COMPANY REAL ESTATE

Presented By:

Otis Rylee
Associate
otis@simpsoncompany.com

Address

The Simpson Company of Georgia, Inc.
425 Spring Street
Suite 200
Gainesville, GA 30501

O: (770) 532-9911
F: (770) 535-6622

www.SimpsonCompany.com

The Simpson Company's team of CCIM, SIOR and IREM trained professionals brings integrity, knowledge and experience to every assignment, working with a commitment to help you make the best real estate decisions for you and your business.

Our brokers and property managers have a wide range of experience with regional, national and international marketing strategies, and we work to help you anticipate market opportunities and leverage competitive advantages. We focus on forward-thinking strategies for each project, to help build success now and create opportunities for the future.



SIOR

