



# *Lakefront Opportunity with Vineyard* **Rancho Del Largo**







Located in the private gated community of Rancho Del Largo, this 38 +/- acre property boasts 250 +/- ft. of private beach front along beautiful Lake Nacimiento. This level Oak-studded parcel has a picturesque home-site with panoramic lake views. The 4200 +/- sf. Tuscan-style storage barn has temperature controlled wine closet and 1500 +/- sf. mezzanine that includes a 900 +/- sf. upstairs apartment. Live in the 2 bedroom/1 bath apartment while you build your dream home or convert the barn into a modern farmhouse. Here you will enjoy all the comforts of home with a wood-burning stove in living room, laminate floors, ceiling fan, recessed lighting & full kitchen. A one acre producing licensed vineyard planted in Zin, Sangiovese and Cabernet compliments this wine country, lake-front oasis. A private 70' x 70' dock with two slips and hydro hoist lift is included in the sale. With two 10,000 gallon water storage tanks, power, well and septic already on the property, this is could be the opportunity you've been waiting for. (NS17181651) Listed at \$1,295,000

**38 +/- Acres with 250 +/- ft. of Private Beach**

**900 +/- SF, 2 Bedroom & 1 Bathroom Apartment**

**1 +/- Acre Planted in Zin, Sangiovese & Cabernet**

**4200 +/- SF Tuscan Style Barn**



## RE/MAX Parkside



**Hugh Pitts**

Broker Associate

(805) 235-9767 (Hugh Direct)

[hugh@hughpitts.com](mailto:hugh@hughpitts.com)

BRE#00950235



©2017 Improv, Inc.

**RE/MAX**

Each Office Independently Owned and Operated.  
This information is deemed from reliable sources but is not guaranteed.

RE/MAX Parkside  
711 - 12th Street  
Paso Robles, CA 93446

## A map of the Nacim river area. The river is shown in blue, winding through a light brown, hilly landscape. A red house icon with a white roof is placed on the left bank of the river. In the top right corner, there is a small box labeled 'G14'. The word 'Nacim' is written vertically on the right side of the map.

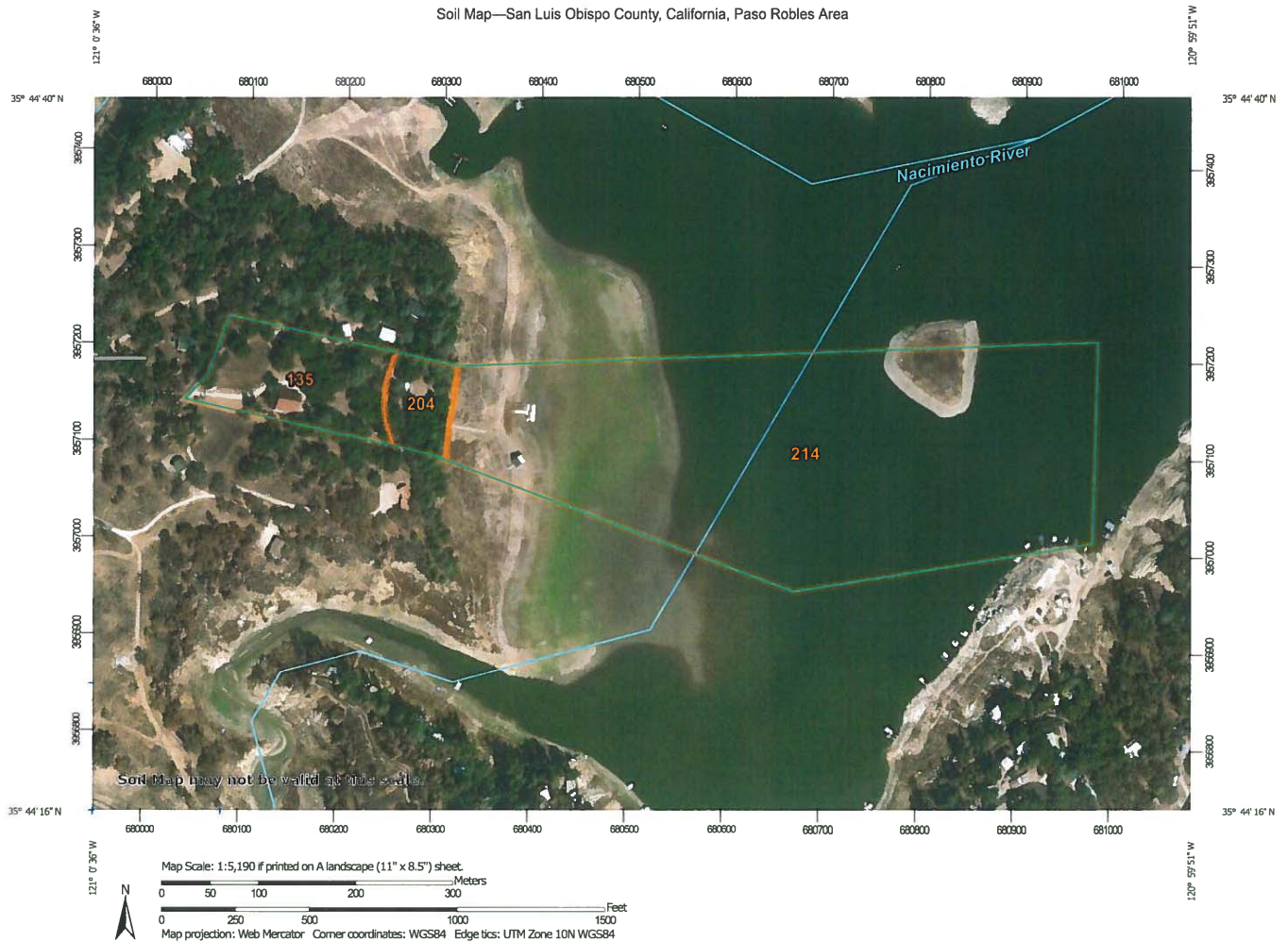
The map displays several land parcels with their respective acreages and owner details:

- Parcel 18:** 112 AC ±, C.C. O.R. 95-059473
- Parcel 23:** 39.1 AC ±, C.C. O.R. 95-059477
- Parcel 26:** 30 AC ±, C.C. O.R. 95-059481
- Parcel 27:** 30.9 AC, C.C. O.R. 95-059482
- Parcel 29:** 39.7 AC ±, C.C. O.R. 95-059483
- Parcel 30:** 12.6 AC ±, C.C. O.R. 95-059475
- Parcel 31:** 10.7 AC ±, C.C. O.R. 95-059476
- Parcel 32:** 12.6 AC, C.C. O.R. 95-059477
- Parcel 33:** 12.5 AC, C.C. O.R. 95-059478
- Parcel 34:** 24.5 AC, C.C. O.R. 95-059479
- Parcel 35:** 42.3 AC, C.C. O.R. 95-059480
- Parcel 36:** 215.0 AC, C.C. O.R. 95-059481
- Parcel 37:** 39.4 AC, C.C. O.R. 95-059482
- Parcel 38:** 13.1 AC, C.C. O.R. 95-059483
- Parcel 39:** 39.7 AC ±, C.C. O.R. 95-059484
- Parcel 40:** 35.4 AC ±, C.C. O.R. 95-059474
- Parcel 41:** 12.6 AC ±, C.C. O.R. 95-059475
- Parcel 42:** 10 AC ±, C.C. O.R. 95-059476
- Parcel 43:** 39 AC ±, C.C. O.R. 95-059477
- Parcel 44:** 30 AC ±, C.C. O.R. 95-059478
- Parcel 45:** 30.9 AC, C.C. O.R. 95-059479
- Parcel 46:** 10.7 AC ±, C.C. O.R. 95-059480
- Parcel 47:** 12.6 AC, C.C. O.R. 95-059481
- Parcel 48:** 12.5 AC, C.C. O.R. 95-059482
- Parcel 49:** 12.5 AC, C.C. O.R. 95-059483
- Parcel 50:** 12.5 AC, C.C. O.R. 95-059484
- Parcel 51:** 12.5 AC, C.C. O.R. 95-059485
- Parcel 52:** 12.5 AC, C.C. O.R. 95-059486
- Parcel 53:** 12.5 AC, C.C. O.R. 95-059487
- Parcel 54:** 12.5 AC, C.C. O.R. 95-059488
- Parcel 55:** 12.5 AC, C.C. O.R. 95-059489
- Parcel 56:** 12.5 AC, C.C. O.R. 95-059490
- Parcel 57:** 12.5 AC, C.C. O.R. 95-059491
- Parcel 58:** 12.5 AC, C.C. O.R. 95-059492
- Parcel 59:** 12.5 AC, C.C. O.R. 95-059493
- Parcel 60:** 12.5 AC, C.C. O.R. 95-059494
- Parcel 61:** 12.5 AC, C.C. O.R. 95-059495
- Parcel 62:** 12.5 AC, C.C. O.R. 95-059496
- Parcel 63:** 12.5 AC, C.C. O.R. 95-059497
- Parcel 64:** 12.5 AC, C.C. O.R. 95-059498
- Parcel 65:** 12.5 AC, C.C. O.R. 95-059499
- Parcel 66:** 12.5 AC, C.C. O.R. 95-059500
- Parcel 67:** 12.5 AC, C.C. O.R. 95-059501
- Parcel 68:** 12.5 AC, C.C. O.R. 95-059502
- Parcel 69:** 12.5 AC, C.C. O.R. 95-059503
- Parcel 70:** 12.5 AC, C.C. O.R. 95-059504
- Parcel 71:** 12.5 AC, C.C. O.R. 95-059505
- Parcel 72:** 12.5 AC, C.C. O.R. 95-059506
- Parcel 73:** 12.5 AC, C.C. O.R. 95-059507
- Parcel 74:** 12.5 AC, C.C. O.R. 95-059508
- Parcel 75:** 12.5 AC, C.C. O.R. 95-059509
- Parcel 76:** 12.5 AC, C.C. O.R. 95-059510
- Parcel 77:** 12.5 AC, C.C. O.R. 95-059511
- Parcel 78:** 12.5 AC, C.C. O.R. 95-059512
- Parcel 79:** 12.5 AC, C.C. O.R. 95-059513
- Parcel 80:** 12.5 AC, C.C. O.R. 95-059514
- Parcel 81:** 12.5 AC, C.C. O.R. 95-059515
- Parcel 82:** 12.5 AC, C.C. O.R. 95-059516
- Parcel 83:** 12.5 AC, C.C. O.R. 95-059517
- Parcel 84:** 12.5 AC, C.C. O.R. 95-059518
- Parcel 85:** 12.5 AC, C.C. O.R. 95-059519
- Parcel 86:** 12.5 AC, C.C. O.R. 95-059520
- Parcel 87:** 12.5 AC, C.C. O.R. 95-059521
- Parcel 88:** 12.5 AC, C.C. O.R. 95-059522
- Parcel 89:** 12.5 AC, C.C. O.R. 95-059523
- Parcel 90:** 12.5 AC, C.C. O.R. 95-059524
- Parcel 91:** 12.5 AC, C.C. O.R. 95-059525
- Parcel 92:** 12.5 AC, C.C. O.R. 95-059526
- Parcel 93:** 12.5 AC, C.C. O.R. 95-059527
- Parcel 94:** 12.5 AC, C.C. O.R. 95-059528
- Parcel 95:** 12.5 AC, C.C. O.R. 95-059529
- Parcel 96:** 12.5 AC, C.C. O.R. 95-059530
- Parcel 97:** 12.5 AC, C.C. O.R. 95-059531
- Parcel 98:** 12.5 AC, C.C. O.R. 95-059532
- Parcel 99:** 12.5 AC, C.C. O.R. 95-059533
- Parcel 100:** 12.5 AC, C.C. O.R. 95-059534
- Parcel 101:** 12.5 AC, C.C. O.R. 95-059535
- Parcel 102:** 12.5 AC, C.C. O.R. 95-059536
- Parcel 103:** 12.5 AC, C.C. O.R. 95-059537
- Parcel 104:** 12.5 AC, C.C. O.R. 95-059538
- Parcel 105:** 12.5 AC, C.C. O.R. 95-059539
- Parcel 106:** 12.5 AC, C.C. O.R. 95-059540
- Parcel 107:** 12.5 AC, C.C. O.R. 95-059541
- Parcel 108:** 12.5 AC, C.C. O.R. 95-059542
- Parcel 109:** 12.5 AC, C.C. O.R. 95-059543
- Parcel 110:** 12.5 AC, C.C. O.R. 95-059544
- Parcel 111:** 12.5 AC, C.C. O.R. 95-059545
- Parcel 112:** 12.5 AC, C.C. O.R. 95-059546
- Parcel 113:** 12.5 AC, C.C. O.R. 95-059547
- Parcel 114:** 12.5 AC, C.C. O.R. 95-059548
- Parcel 115:** 12.5 AC, C.C. O.R. 95-059549
- Parcel 116:** 12.5 AC, C.C. O.R. 95-059550
- Parcel 117:** 12.5 AC, C.C. O.R. 95-059551
- Parcel 118:** 12.5 AC, C.C. O.R. 95-059552
- Parcel 119:** 12.5 AC, C.C. O.R. 95-059553
- Parcel 120:** 12.5 AC, C.C. O.R. 95-059554
- Parcel 121:** 12.5 AC, C.C. O.R. 95-059555
- Parcel 122:** 12.5 AC, C.C. O.R. 95-059556
- Parcel 123:** 12.5 AC, C.C. O.R. 95-059557
- Parcel 124:** 12.5 AC, C.C. O.R. 95-059558
- Parcel 125:** 12.5 AC, C.C. O.R. 95-059559
- Parcel 126:** 12.5 AC, C.C. O.R. 95-059560
- Parcel 127:** 12.5 AC, C.C. O.R. 95-059561
- Parcel 128:** 12.5 AC, C.C. O.R. 95-0

Boundary lines shown are approximate only.  
Information is deemed from reliable sources, but is not guaranteed.



# ~ Soils Map ~



## Map Unit Legend

San Luis Obispo County, California, Paso Robles Area (CA665)			
Map Unit Symbol	Map Unit Name	Acres in AOI	Percent of AOI
135	Dibble clay loam, 15 to 30 percent slopes	4.4	11.4%
204	Shimmon-Dibble association, very steep	1.6	4.1%
214	WATER	32.6	84.5%
Totals for Area of Interest		38.6	100.0%

Boundary lines shown are approximate only.  
Information is deemed from reliable sources, but is not guaranteed.



# ~ Topography Map ~



Boundary lines shown are approximate only.  
Information is deemed from reliable sources, but is not guaranteed.