



The Burgess Farm

*936 Dailey's Chapel Rd
Oneonta, Alabama*

GPS - 33 93428, 86 36706

The Burgess Farm - Come Homestead or Escape on 83+/- Acres with Lush Gentle Rolling Pastures, Scenic Timber Canopies and Mountain Views in the Distance. Farm has Two Separate Pastures Divided by a Scenic Mature 22+/- Timber Stand. The updated Farm House Features 2BR and 1.5 Baths. Seller's Western Decor will immerse your senses to feel right at home on the farm. Gorgeous Hardwood Floors and Interior Walls. Relax near your Real Stack Stone Wood Burning Fireplace as you look out the back windows or relax in the screened porch overlooking the Pond behind the house. Cozy Barn for Storing Equipment and Tools Plus be Great for Entertaining Guest. There are Two Small Older Chicken Houses that's great for Storing Hay and Additional Equipment. Large Barn in the Back to Round Up the Cows/Horses or Additional Hay Storage. Small pond by the House and Pond in the Pasture then a Small Pond in Back Pasture. You have a gorgeous 30/40 acre area in the Back for Cabins and Riding Arena. Property Fronts the upper Locust Fork and Small Stream. All barns are well lighted and have power. Don't Miss this Farm.

Directions from Birmingham: Go I-59 NE to Ashville Exit 166. Turn Left on Hwy 231. Right onto Daileys Chapel Road. Home on the Left. Shown by Appointment Only. No Sign on Property.



AlabamaLandAgent.com

Land • Farms • Lake Property

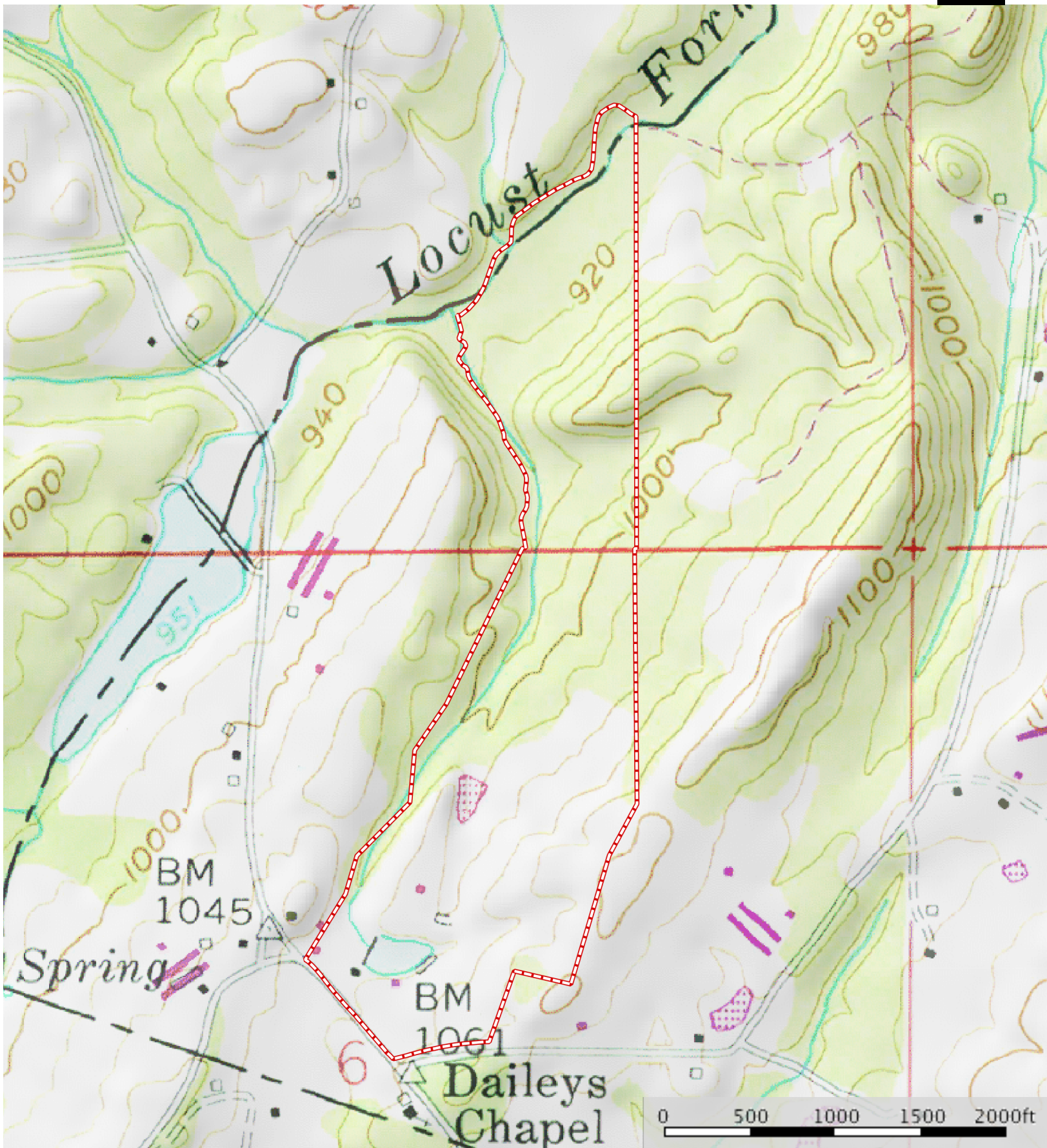
**Lovejoy Realty
Chad Camp
(205) 478-4974**

www.LovejoyRealty.com



Boundary

Not a Survey.



Boundary

Not a Survey.