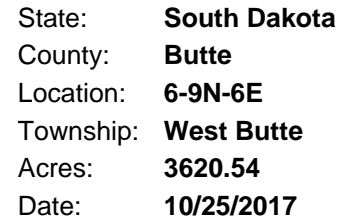
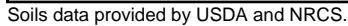


## Soils Map



Maps Provided By:

 **surety**<sup>®</sup>  
CUSTOMIZED ONLINE MAPPING

© AgriData, Inc. 2017 [www.AgriDataInc.com](http://www.AgriDataInc.com)



Area Symbol: SD019, Soil Area Version: 20													
Cod e	Soil Description	Acres	Percent of field	PI Legend	Non-Irr Class *c	Irr Class *c	Productivity Index	State Productivity Index	Alfalfa hay Irrigated	Barley Irrigated	Oats Irrigated	Pasture Irrigated	NCCPI Overall
WnB	Winler clay, 0 to 9 percent slopes	789.06	21.8%		Vle		17	9					17
PrB	Pierre clay, 2 to 6 percent slopes	748.46	20.7%		IVe		29	16					17
PrD	Pierre clay, 6 to 20 percent slopes	520.84	14.4%		Vle		30	17					16
ToB	Twotop clay, 0 to 9 percent slopes	315.84	8.7%		Vle		33	18					22
KIB	Kyle clay, 2 to 6 percent slopes	230.26	6.4%		IVe		51	28					19
Kt	Kyle clay, terrace	196.71	5.4%		IVs	IVs	65	36					16
BmB	Bidman loam, 2 to 6 percent slopes	167.87	4.6%		IIIe		51	28	4	70	80	7	23
PrA	Pierre clay, 0 to 2 percent slopes	132.52	3.7%		IVs		57	31					16
Sr	Stetter clay, 0 to 3 percent slopes, occasionally flooded	106.14	2.9%		IVw		29	16					19
HsB	Hisle-Slickspots complex, 0 to 6 percent slopes	88.85	2.5%		VIIe		8	4					5
KIA	Kyle clay, 0 to 2 percent slopes	78.93	2.2%		IVe		54	30					19
W	Water	60.41	1.7%				0	0					0
Sa	Sage-Slickspots complex, 0 to 15 percent slopes	54.69	1.5%		VIIIs		4	2					0
LcE	Lismas clay, 10 to 40 percent slopes	39.34	1.1%		VIIe		9	5					3
Ss	Stetter clay, channeled	35.12	1.0%		VIw		29	16					8
SIB	Slickspots-Wasa complex, 0 to 6 percent slopes	18.83	0.5%		VIIIs		4	2					6

WaB	Wasa-Slickspots complex, 0 to 6 percent slopes	10.94	0.3%		Vle		7	4					11
Mn	McKenzie clay	7.75	0.2%		Vw		13	7					14
SuA	Swanboy clay, 0 to 3 percent slopes	6.82	0.2%		Vls		20	11					14
Mh	Aquolls	6.37	0.2%		Vlllw		5	3					2
MrD	Midway-Razor silty clay loams, 3 to 15 percent slopes	4.02	0.1%		Vle		29	16					11
BaA	Baca silty clay loam, 0 to 2 percent slopes	0.77	0.0%		llls		50	28					29
<b>Weighted Average</b>							<b>30.9</b>	<b>17</b>	<b>0.2</b>	<b>3.2</b>	<b>3.7</b>	<b>0.3</b>	<b>16.5</b>

\*c: Using Capabilities Class Dominant Condition Aggregation Method

Soils data provided by USDA and NRCS.