

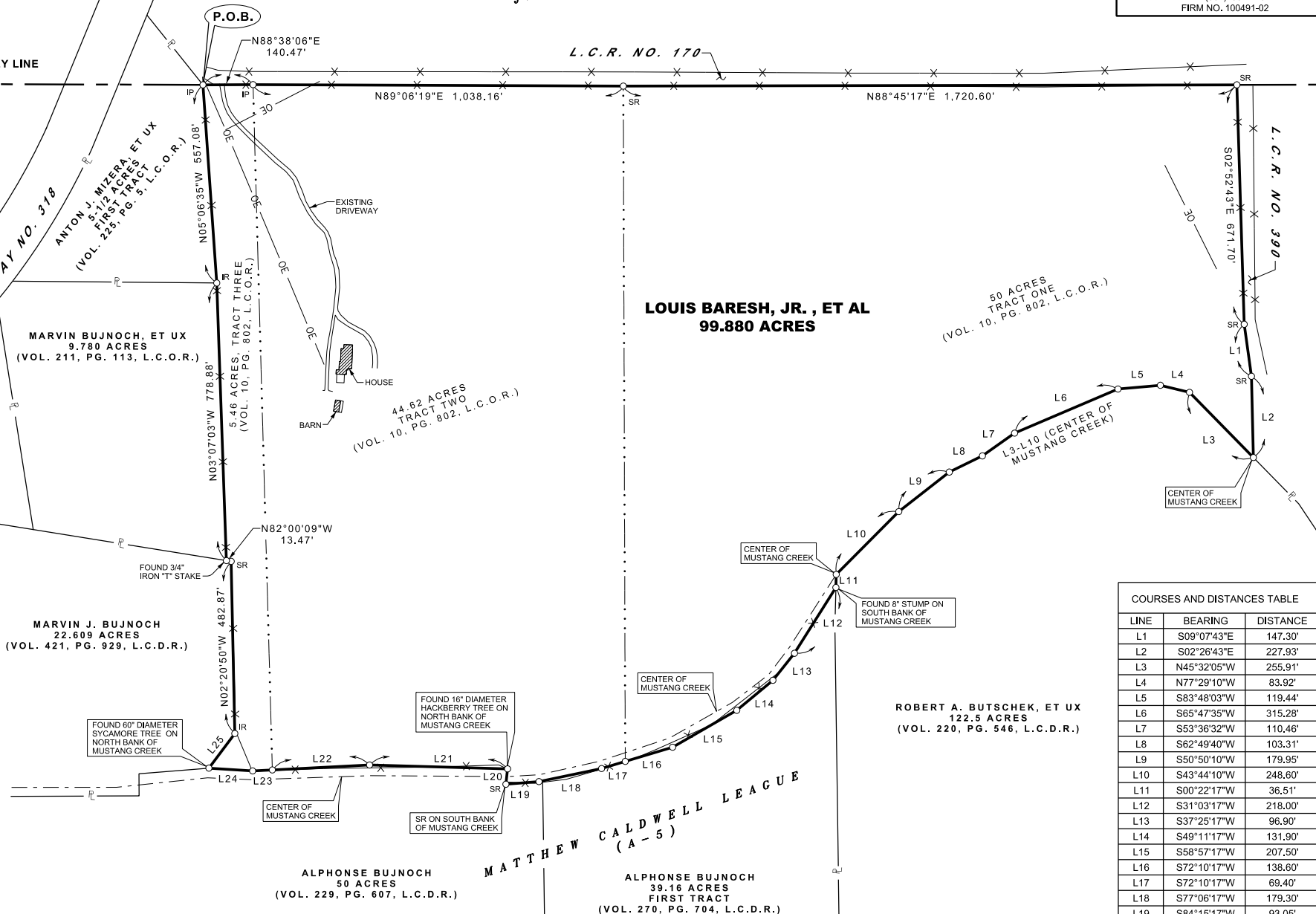
JAMES KERR LEAGUE
(A-24)

-

I HEREBY CERTIFY THAT THIS PLAT WAS
PREPARED FROM A SURVEY PERFORMED ON THE
GROUND, AND CORRECTLY REPRESENTS THE
FACTS FOUND AT THE TIME OF THE SURVEY.



PATRICK MATUSEK
REGISTERED PROFESSIONAL LAND SURVEYOR
LICENSE NO. 4518,
STATE OF TEXAS
SURVEYED: OCTOBER 16, 2017



COURSES AND DISTANCES TABLE		
LINE	BEARING	DISTANCE
L1	S09°07'43"E	147.30'
L2	S02°26'43"E	227.93'
L3	N45°32'05"W	255.91'
L4	N77°29'10"W	83.92'
L5	S83°48'03"W	119.44'
L6	S65°47'35"W	315.28'
L7	S53°36'32"W	110.46'
L8	S62°49'40"W	103.31'
L9	S50°50'10"W	179.95'
L10	S43°44'10"W	248.60'
L11	S00°22'17"W	36.51'
L12	S31°03'17"W	218.00'
L13	S37°25'17"W	96.90'
L14	S49°11'17"W	131.90'
L15	S58°57'17"W	207.50'
L16	S72°10'17"W	138.60'
L17	S72°10'17"W	69.40'
L18	S77°06'17"W	179.30'
L19	S84°15'17"W	93.05'
L20	N05°09'17"E	43.41'
L21	N89°31'32"W	387.23'
L22	S85°58'17"W	272.90'
L23	S85°58'17"W	55.42'
L24	N87°25'33"W	122.80'
L25	N35°42'48"E	121.19'