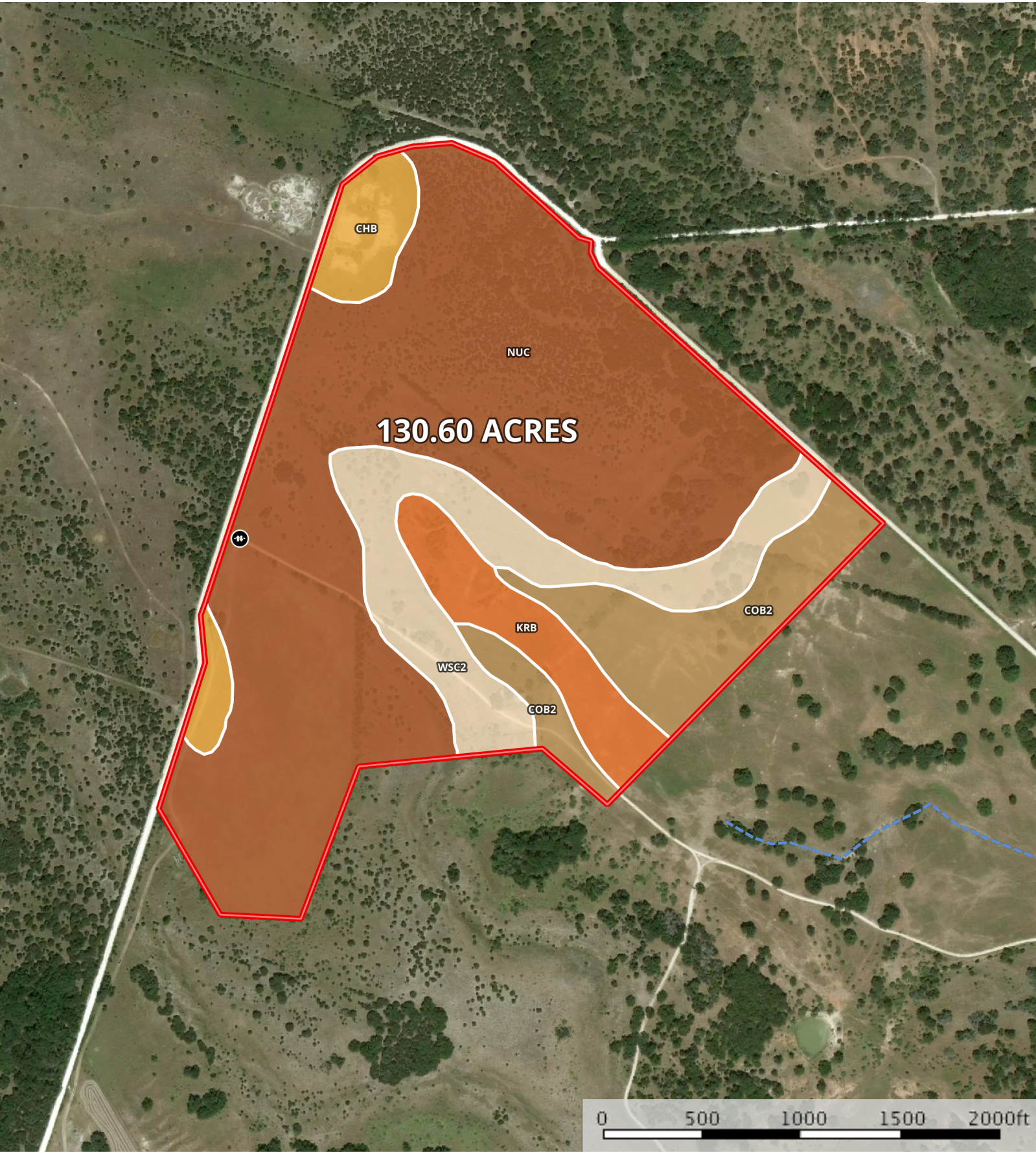


TBD CR 188 - 130.6 Acres
Coryell County, Texas, 130.6 AC +/-



Gate

Stream

Boundary

|  Boundary 129.2 ac

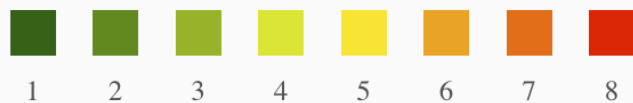
SOIL CODE	SOIL DESCRIPTION	ACRES	%	CAP
CoB2	Cisco fine sandy loam, 1 to 5 percent slopes, moderately eroded	15.2	11.79	3e
KrB	Krum silty clay, 1 to 3 percent slopes	8.6	6.67	2e
WsC2	Wise clay loam, 3 to 5 percent slopes, moderately eroded	17.6	13.61	-
ChB	Cho clay loam, 1 to 3 percent slopes	6.3	4.88	-
NuC	Nuff very stony silty clay loam, 2 to 6 percent slopes	81.4	63.04	6s
TOTALS		129.2	100%	4.27

Capability Legend

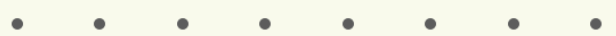
Increased Limitations and Hazards

Decreased Adaptability and Freedom of Choice Users

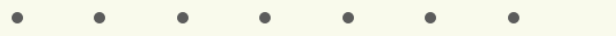
Land, Capability
Class(non-irrigated)



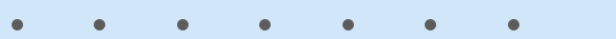
'Wild Life'



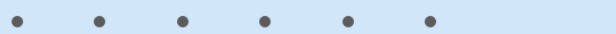
Forestry



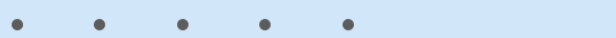
Limited



Moderate



Intense



Limited



Moderate



Intense



Very Intense



Grazing Cultivation

(c) climatic limitations (e) susceptibility to erosion

(s) soil limitations within the rooting zone (w) excess of water