



Farm Tracts

Available

*Curry Station &
Oak Grove Rd*

Munford, AL

GPS 33.52032, -86.00429

Convenient 199+/- Acre Farm - Gorgeous 3BR 2.5BA Full Brick Home with Bonus Room that has Potential for 4th Bedroom. Lots of Kitchen Cabinetry with Granite Countertops. Gorgeous Great Room with Lots of Windows and Plenty of Sunlight. Large Master Bedroom with Triple Trey Ceiling and Large Master Bedroom Closets. Separate Tub and Shower Plus Double Vanities and Tile Flooring. Den has Double Trey Ceiling and Fireplace. Dining Room is Close to Kitchen and Across from Den. All Bedrooms are Separate. 2nd Guest or Farm Hand Home Full Brick Built in the 60's. Pasture is Fenced and Ready to Farm with 3 Ponds and 3 Large Barns. Several good Hay Fields. Lots of road frontage. Seller will Consider Dividing. Seller has final decision on which tracts go first depending on the home's current listed status..

Directions: From Bham: Go East on I-20 to Eastaboga Exit 173. Turn Right and Immediately Turn Left onto Curry Station Rd. Turn Left onto Oak Grove Rd. Property on the Right.



AlabamaLandAgent.com

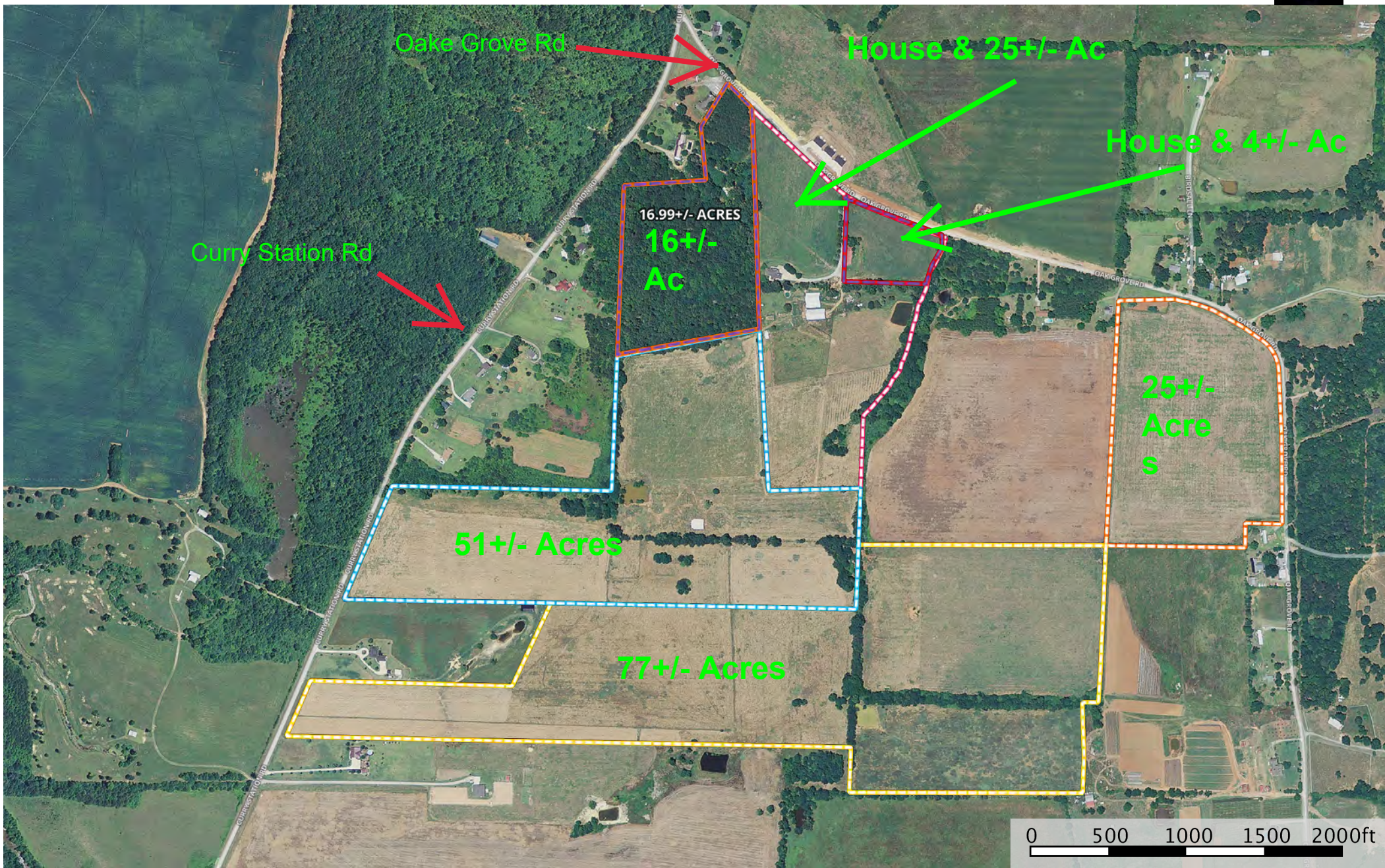
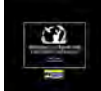
Land • Farms • Lake Property

Lovejoy Realty

Chad Camp

(205) 478-4974

www.LovejoyRealty.com



1. House & 25 +/- Acres - \$450,000
2. House & 4 +/- Acres - \$89,900
3. 25 +/- Acres - \$120,000
4. 77 +/- Acres - \$275,000
5. 51 +/- Acres - \$249,900
6. 16 +/- Acres - \$68,900

chad camp

P: 205-478-4974

chad@lovejoyrealty.com

11520 US Hwy 411 - Odenville, AL 35120