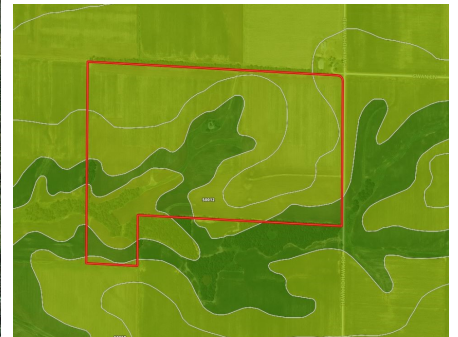


# Tillable Farm Land for Sale

## Ralls County, Missouri

www.TrophyPA.com • 855.573.5263 • leads@trophy.com



### PROPERTY ADDRESS:

00 Hawk Road  
 Vandalia, MO 63382

**PRICE:** \$1,060,000

**ACRES:** 158

**COUNTY:** Ralls

### PROPERTY DESCRIPTION:

Ralls County Missouri tillable farm for sale has 158 +/- acres total, with 145 +/- tillable ground. This farm has no improvements and is primarily tillable with 71% Class A soils, Mexico Silt Loam and Putnam Silt Loam. An additional 20% is a high Class B Soil. One half mile of county road frontage and lays 1/2 mile off of Hwy. 154. This farm is available for 2018 crop year.

### PROPERTY HIGHLIGHTS:

- 158 +/- acres
- High percentage tillable ground
- Mostly Class A soils
- .5 mile gravel road frontage
- .5 miles off of Hwy 154
- 3 miles from Vandalia, MO



**PRESENTED BY:**

**FRANK WALLACE**

**Salesperson**

M: (573) 470-0779

P: (855) 573-5263 x718

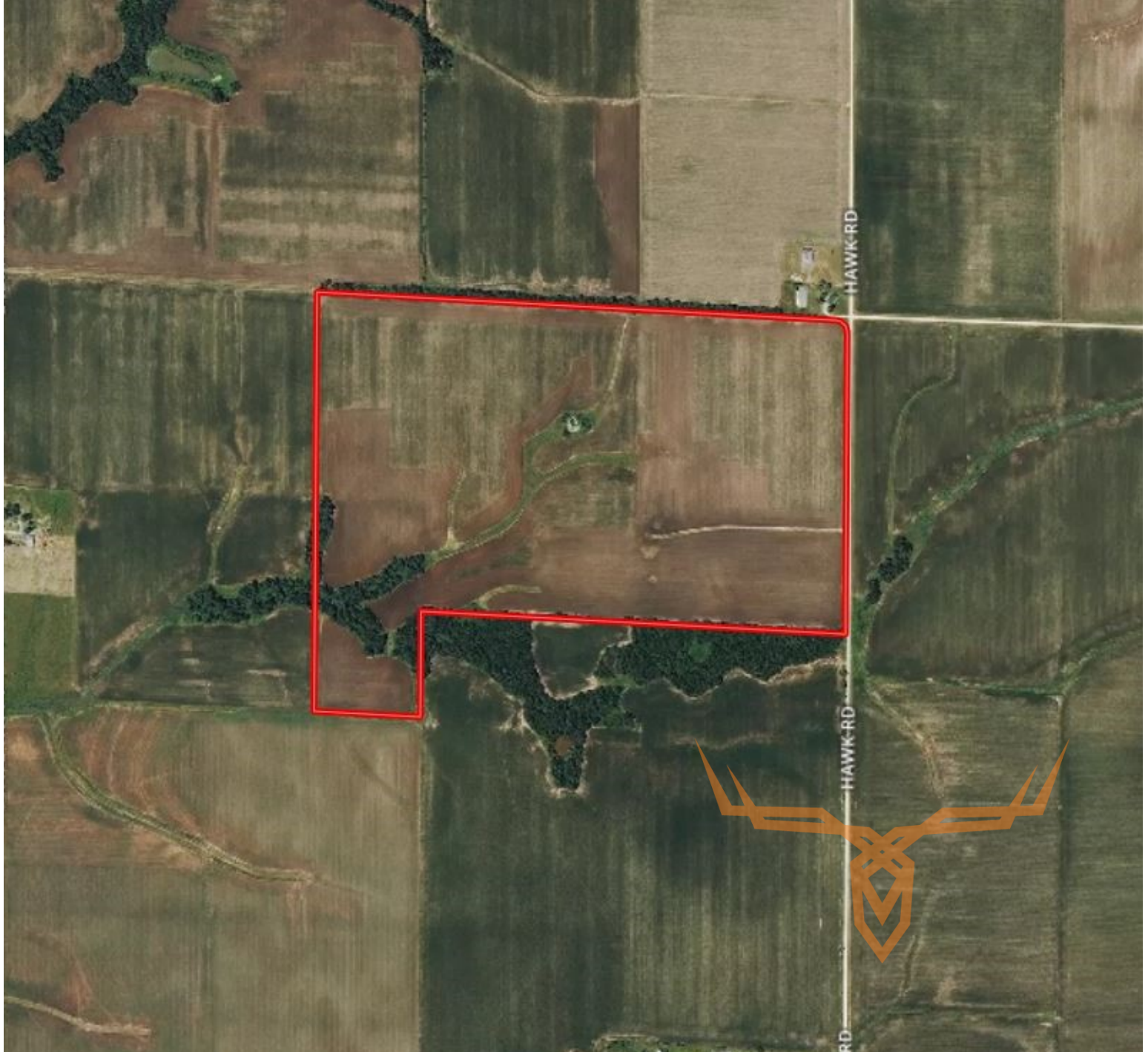
fwallace@trophy.com

Trophy Properties and Auction  
 15480 Clayton Road  
 Suite 101  
 Ballwin, MO 63011  
 www.Trophy.com  
 leads@trophy.com

# Tillable Farm Land for Sale

## Ralls County, Missouri

[www.TrophyPA.com](http://www.TrophyPA.com) • 855.573.5263 • [leads@trohypa.com](mailto:leads@trohypa.com)



Broker does not guarantee the accuracy of sq. ft., lot size, or other information, buyer is advised to independently verify the accuracy of information through personal inspection and with appropriate professionals

**TAXES: \$205**

**TAX YEAR: 2016**