



Farmland Sales Specialists

Setting the trend for how Real Estate is sold in the Midwest.
www.BarnesRealty.com

**18156 Hwy 59
Mound City, MO 64470
(660) 442-3177**

**1711 Oregon
Hiawatha, KS 66434
(785) 742-4580**

**1708 Prairie View Rd, Suite B
Platte City, MO 64079
(816) 219-3010**

Implement Shed, Holt County, MO

If you're looking for a spacious, fully enclosed machine shed look no further!! This building offers a great location close to Mound City, Missouri with interstate access nearby!

LOCATION:

Take Highway 118 West out of Mound City, Missouri to Ironwood Rd. Go North on Ironwood Rd. for approximately 2 miles. The property will be on the right.

PRICE: \$86,500.00 Total

IMPROVEMENTS:

160' x 40' Implement shed

TAXES/TAXABLE ACRES:

2016 taxes were \$1,483.92 for 0.65 acres, home, garage and implement shed

PHYSICAL ADDRESS:

18633 Iron Wood Rd. Craig, MO

LISTING AGENT:

Jamie Barnes
(660) 851-1125 or jamie@barnesrealty.com



BROKER PARTICIPATION:

Barnes Realty Company, as listing broker, will gladly and fully cooperate with most licensed real estate brokers to obtain a sale of the property on terms satisfactory to the current owners.

Setting the trend for how Real Estate is sold in the Midwest.

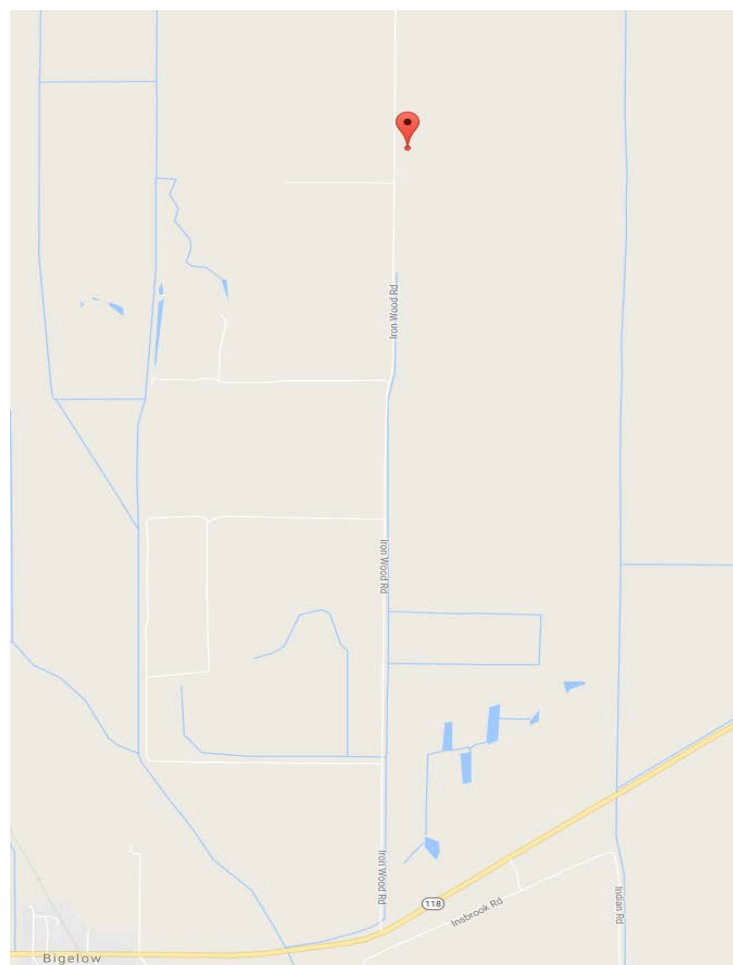
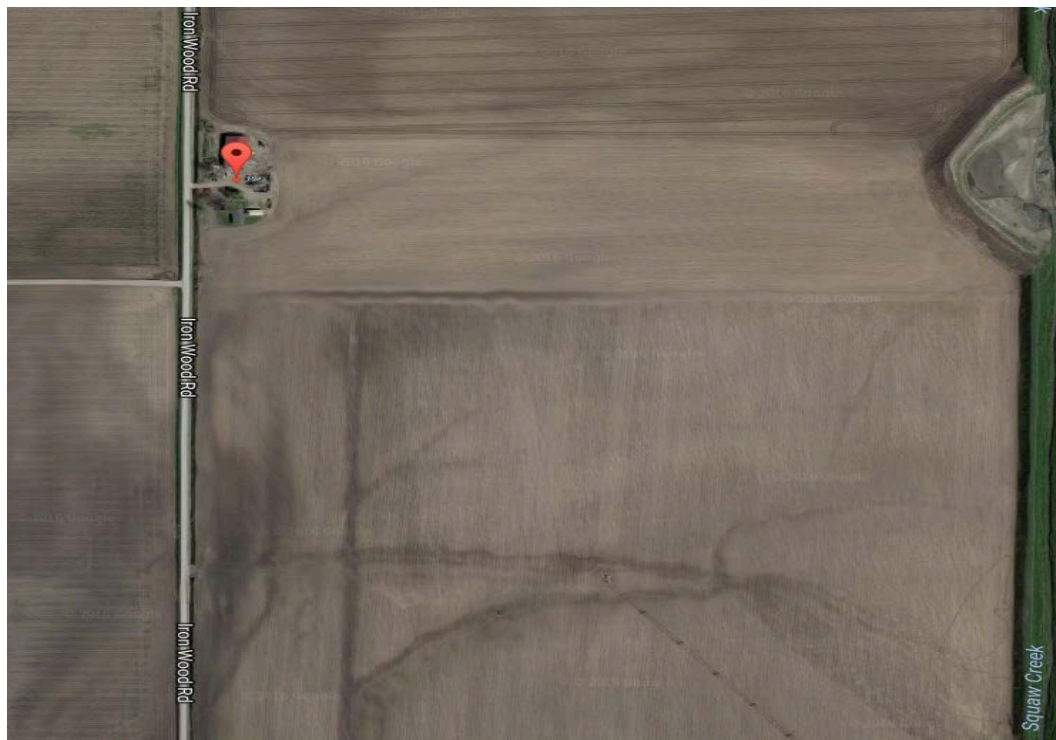
This information is thought to be accurate; however, it is subject to verification and no liability for error and omissions is assumed. Barnes Realty has made every effort to present accurate information on the property presented. Most of the information comes from outside sources:

County/Government/Seller and human error can occur. It's the buyer's responsibility to satisfy himself with the information presented and to determine the information to be true and accurate and the property to be suited for his intended use. The listing may be withdrawn with or without approval. The seller further reserves the right to reject any and all offers. All inquiries, inspections, appointments, and offers must be sent thorough:

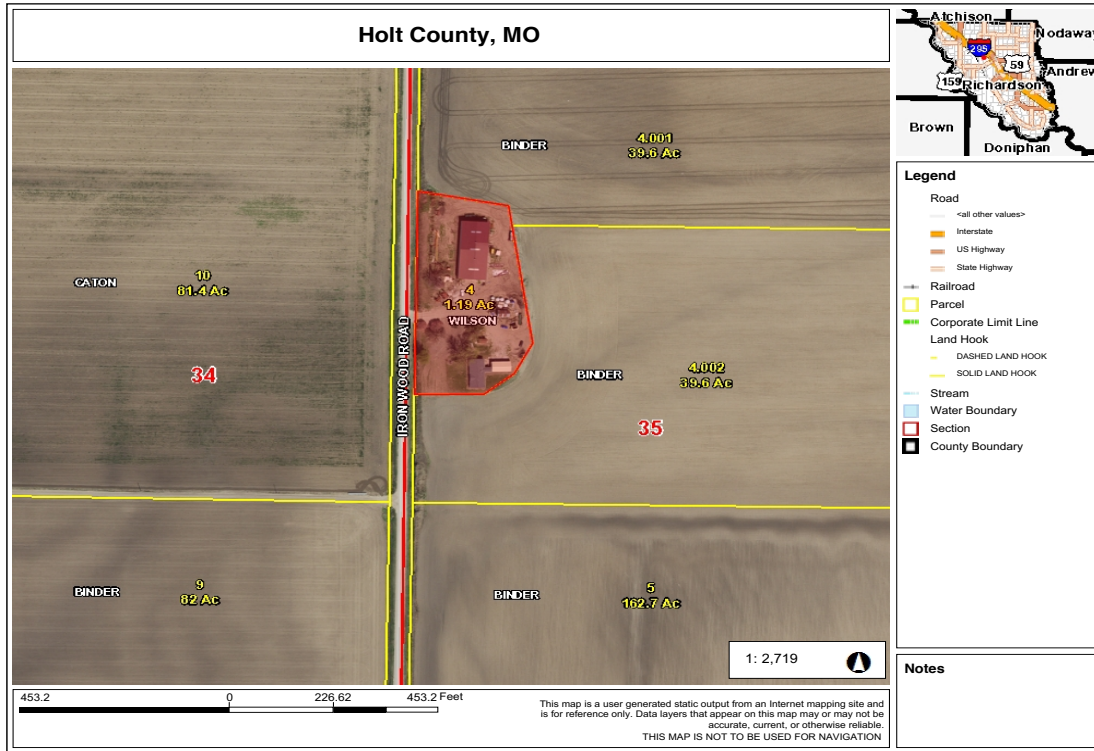
Rick Barnes, BARNES REALTY COMPANY, 18156 HWY 59, MOUND CITY, MO 64470 PHONE NUMBER: 1-660-442-3177

Implement Shed, Holt County, MO

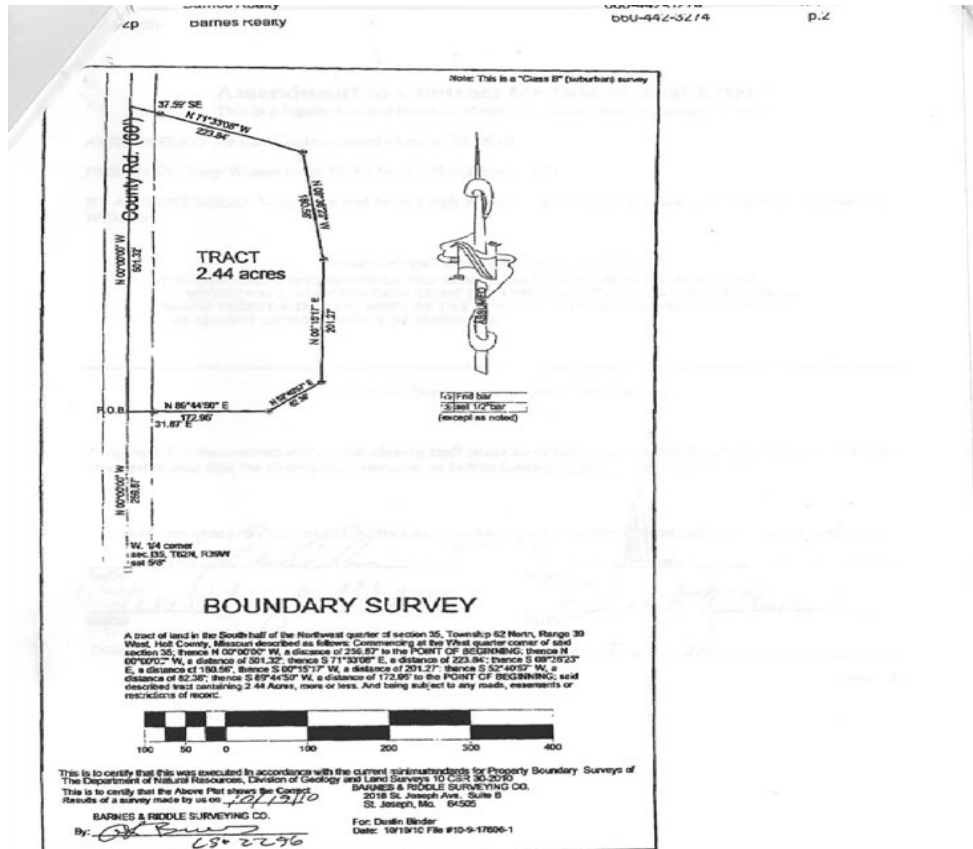
Google Aerial



Implement Shed, Holt County, MO Tax Map



Survey



Implement Shed, Holt County, MO
Aerial Pictures



Implement Shed, Holt County, MO

