

LAND FOR SALE

J-MAR FARM VALLEY COUNTY



- Location:** Approximately 3 1/2 miles southeast of Burwell, or 8 miles northwest of Ord, Nebraska on State Hwy 11. (farm located on the corner of State Hwy 11 & 821 Road)
- Legal Description:** NW1/4 except highway; NW1/4 SW1/4 less canal and a 6.9 acre tract; all in Section 8 T20N-R15W of the 6th P.M., Valley County, Nebraska
- Acres:** Valley County Assessor indicates a total of 183.27 acres. Farm consists of gravity irrigated and dry cropland with wooded pasture.
- Taxes:** 2017 Real Estate Tax - \$9,571.50
- FSA Info:** Total Cropland - 141.43 acres
Government Base Acres - Corn 141.4 with a PLC yield of 160 bu/acre
All cropland is considered non-highly erodible by the NRCS
- Irrigation Info:** Water for irrigation is provided by 144 acres of water rights from the North Loup River Public Power & Irrigation District. Farm is located in the Lower Loup Natural Resource District, and contains 141.43 certified irrigated acres.
- Soils:** Soils of the cropland consist primarily of Class I and II Hord and Cozad silt loams, with slopes of 0-3%. Soils of the wooded pasture consist of Coly, Hobbs, and Cozad silt loams, with slopes ranging from 0-60%.
- Building Improvements:** A vacant improvement site consisting of an older house, bins, and out buildings is located in the southwest portion of the NW1/4.
- Price:** \$840,000 CASH
- Comments:** This farm offers highly productive cropland, along with wooded pasture which offers both agricultural and recreational amenity.
- Contact:** Bart Woodward; Listing Agent 308-233-4605 or bart@agriaffiliates.com

Agri Affiliates—Providing Farm, Ranch Real Estate Services

Offered Exclusively By:



Bart Woodward
Listing Agent

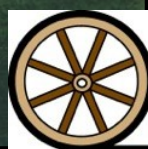
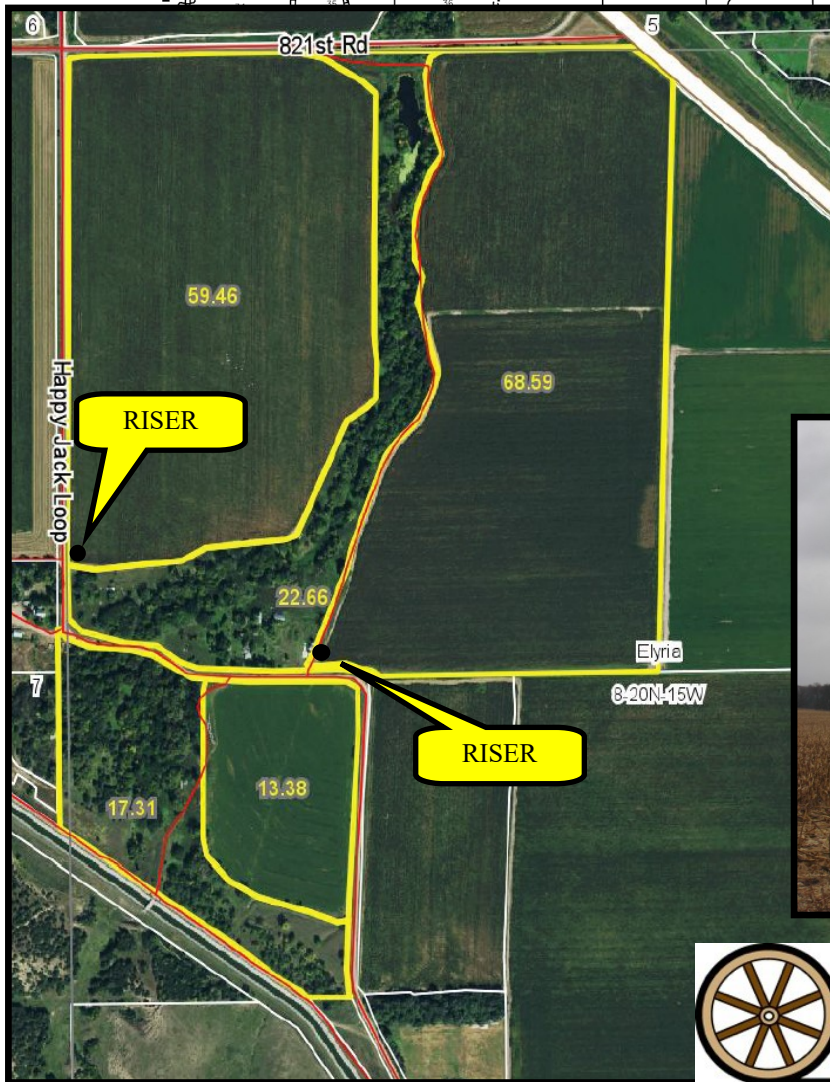
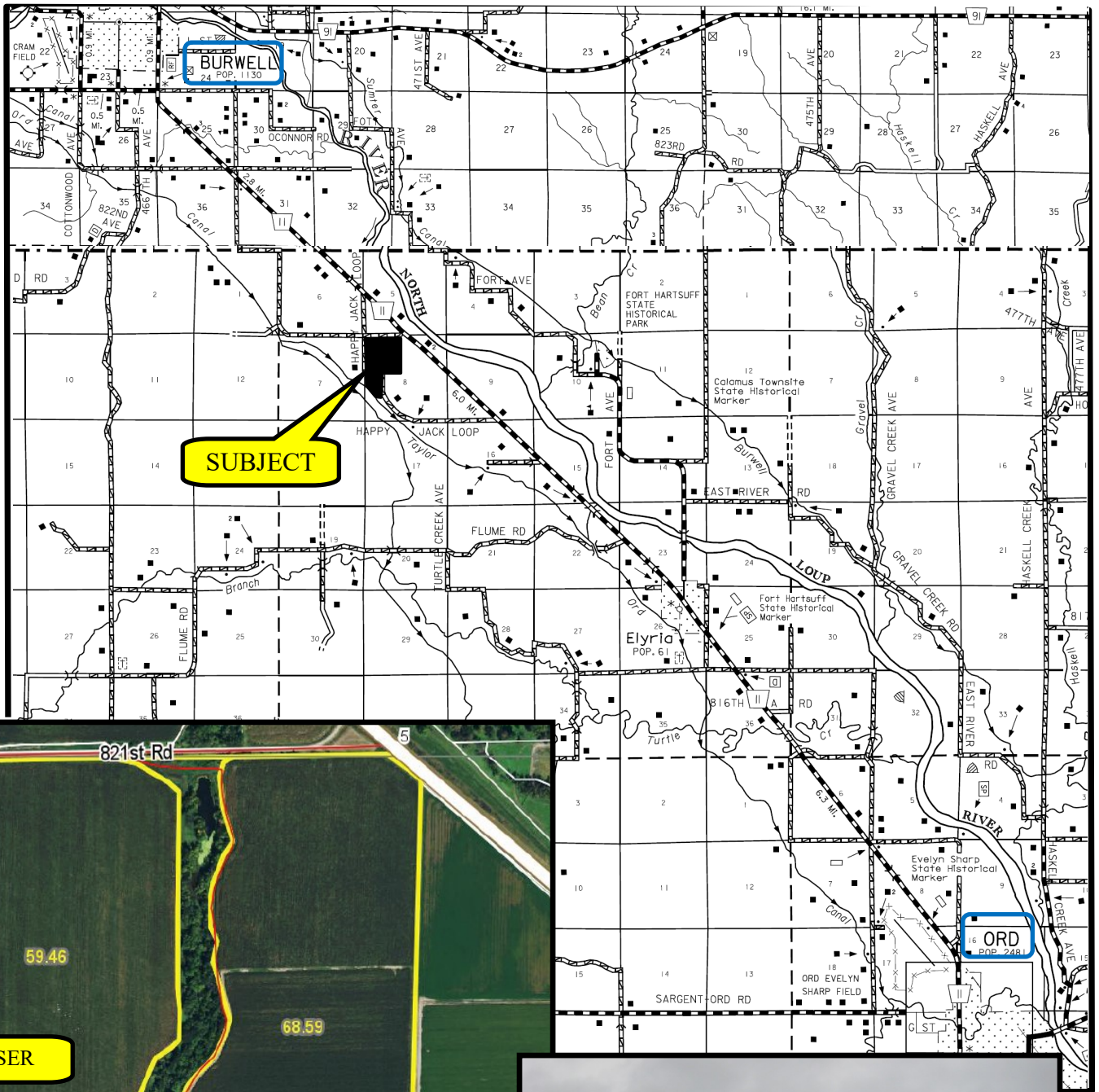


AGRI AFFILIATES, INC.
Providing Farm - Ranch Real Estate Services

KEARNEY OFFICE
P O Box 1390
2418 Hwy 30 E
Kearney, NE 68848-1390
www.agriaffiliates.com
(308) 234-4969
Fax (308) 236-9776

Information contained herein was obtained from sources deemed reliable. We have no reason to doubt the accuracy, but the information is not guaranteed. Prospective Buyers should verify all information. All maps provided by Agri Affiliates, Inc. are approximations only, to be used as a general guideline, and not intended as survey accurate. As with any agricultural land, this property may include noxious weeds. Agri Affiliates, Inc. and all agents are acting as Agent of the Seller.





AGRI AFFILIATES, INC.
Providing Farm - Ranch Real Estate Services