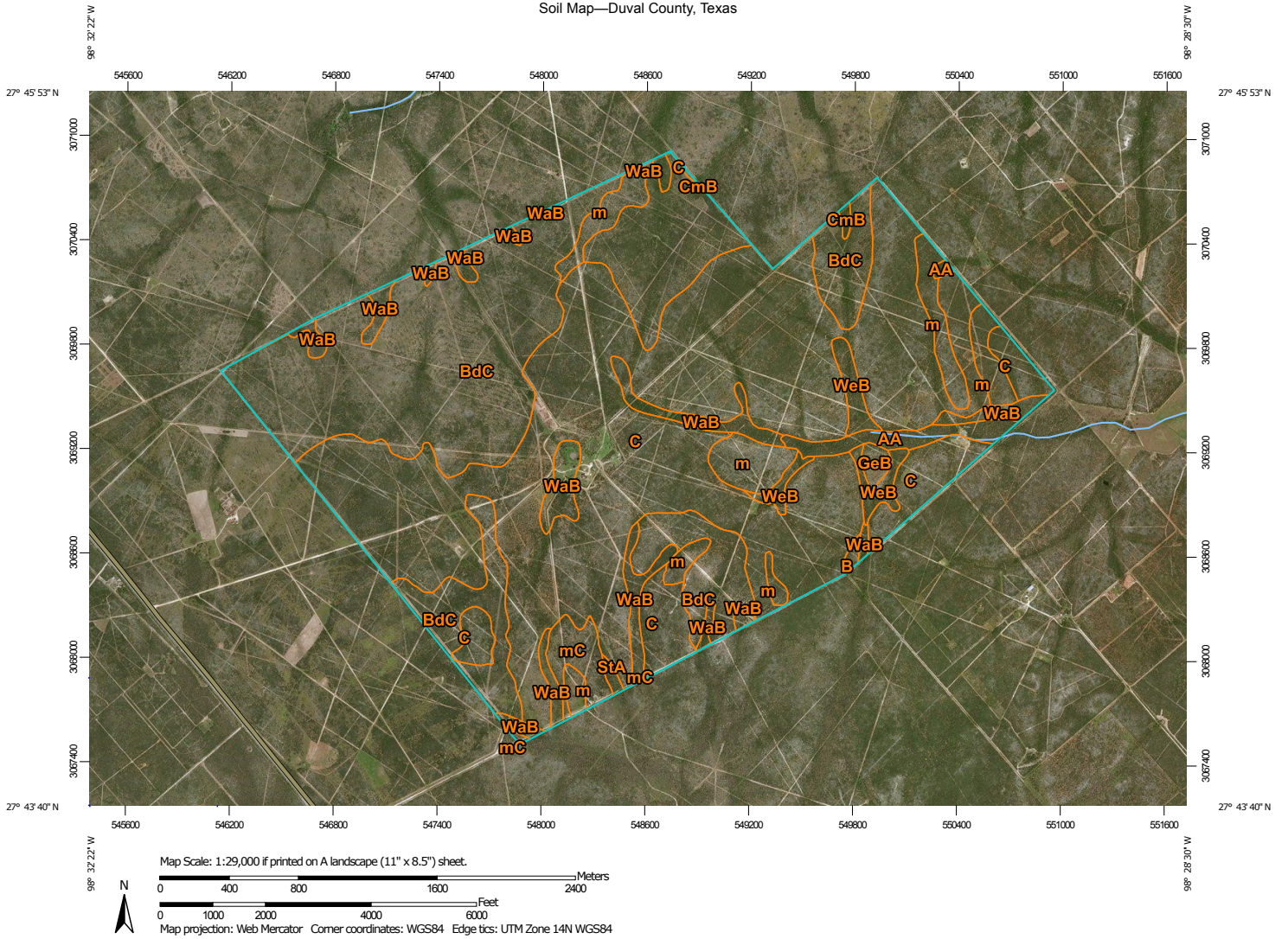



Soil Map—Duval County, Texas





MAP LEGEND


Area of Interest (AOI)

 Area of Interest (AOI)

Soils

 Soil Map Unit Polygons

 Soil Map Unit Lines

 Soil Map Unit Points

Special Point Features



Blowout



Borrow Pit



Clay Spot



Closed Depression



Gravel Pit



Gravelly Spot



Landfill



Lava Flow



Marsh or swamp



Mine or Quarry



Miscellaneous Water



Perennial Water



Rock Outcrop



Saline Spot



Sandy Spot



Severely Eroded Spot



Sinkhole



Slide or Slip



Sodic Spot



Spoil Area



Stony Spot



Very Stony Spot



Wet Spot



Other



Special Line Features

Water Features



Streams and Canals

Transportation



Rails



Interstate Highways



US Routes



Major Roads



Local Roads

Background



Aerial Photography

MAP INFORMATION

The soil surveys that comprise your AOI were mapped at 1:24,000.

Please rely on the bar scale on each map sheet for map measurements.

Source of Map: Natural Resources Conservation Service

Web Soil Survey URL:

Coordinate System: Web Mercator (EPSG:3857)

Maps from the Web Soil Survey are based on the Web Mercator projection, which preserves direction and shape but distorts distance and area. A projection that preserves area, such as the Albers equal-area conic projection, should be used if more accurate calculations of distance or area are required.

This product is generated from the USDA-NRCS certified data as of the version date(s) listed below.

Soil Survey Area: Duval County, Texas

Survey Area Data: Version 20, Nov 7, 2017

Soil map units are labeled (as space allows) for map scales 1:50,000 or larger.

Date(s) aerial images were photographed: May 15, 2013—Feb 28, 2017

The orthophoto or other base map on which the soil lines were compiled and digitized probably differs from the background imagery displayed on these maps. As a result, some minor shifting of map unit boundaries may be evident.

Map Unit Legend

Map Unit Symbol	Map Unit Name	Acres in AOI	Percent of AOI
AIA	Alet sandy clay loam, 0 to 1 percent slopes, rarely flooded	31.8	1.4%
BdC	Benavides fine sandy loam, 2 to 5 percent slopes	715.7	32.0%
CmB	Colmena fine sandy loam, 0 to 3 percent slopes	2.7	0.1%
DRB	Delmita-Randado complex, 0 to 3 percent slopes	3.2	0.1%
GeB	Gertrudis fine sandy loam, 0 to 3 percent slopes	7.8	0.3%
OmD	Olmedo very gravelly sandy loam, 1 to 8 percent slopes	116.5	5.2%
PmC	Pernitas fine sandy loam, 1 to 5 percent slopes	30.2	1.4%
PRC	Piedras and Cuevitas soils, 1 to 5 percent slopes	1,173.8	52.6%
StA	Sinton sandy clay loam, 0 to 1 percent slopes, occasionally flooded	3.1	0.1%
WaB	Weesatche fine sandy loam, dry, 1 to 3 percent slopes	112.9	5.1%
WeB	Weesatche sandy clay loam, 1 to 3 percent slopes	35.5	1.6%
Totals for Area of Interest		2,233.2	100.0%