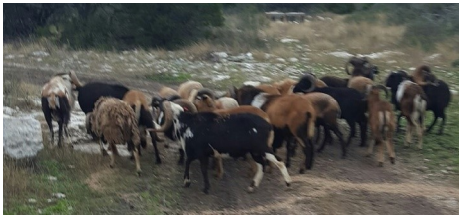
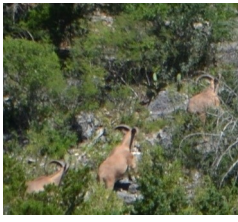




**H 4 Ranch**

**346.12 Acres**

**Edwards County, TX**



Located in Northern Kinney County 17 miles North of Brackettville

Near end of the road ranch, very private with large neighbor

Level flats to rolling canyons making a great habitat for wildlife

Great natural browse throughout the ranch for the wildlife

Ranch is very well watered with a water well, storage tanks,  
miles of piping, several ponds and numerous watering troughs

Improvements:

+/- 1200 sq. ft. 2/1 main house

+/- 180 sq. ft. bunkhouse that sleeps 5

car port 30ft x 40ft

30 x 60 barn

Stocked full of animals:

+/- 20 head of Black Hawaiian/painted rams/ Texas Dahl Sheep

+/- 100 Blackbuck

+/- 50 Aoudad

+/- 50 Douglass Sika

+/- 100 Genetic Whitetail

+/-75 Axis

Turkey , Hogs

ATVs, Tractor, Blinds and Feeders, Furnishings

Miles and Miles of internal roads

Wildlife exempt taxes      \$695,000      Listing #346

**Western Hill Country Realty**

[www.westernhillcountryrealty.com](http://www.westernhillcountryrealty.com)

[info@westernhillcountryrealty.com](mailto:info@westernhillcountryrealty.com)

**830-683-4435**





# H 4 Ranch 346.12 Acres Edwards County, TX



## Western Hill Country Realty

[www.westernhillcountryrealty.com](http://www.westernhillcountryrealty.com)

[info@westernhillcountryrealty.com](mailto:info@westernhillcountryrealty.com)

830-683-4435





**H 4 Ranch**

**346.12 Acres**

**Edwards County, TX**



**Western Hill Country Realty**

[www.westernhillcountryrealty.com](http://www.westernhillcountryrealty.com)

[info@westernhillcountryrealty.com](mailto:info@westernhillcountryrealty.com)

830-683-4435