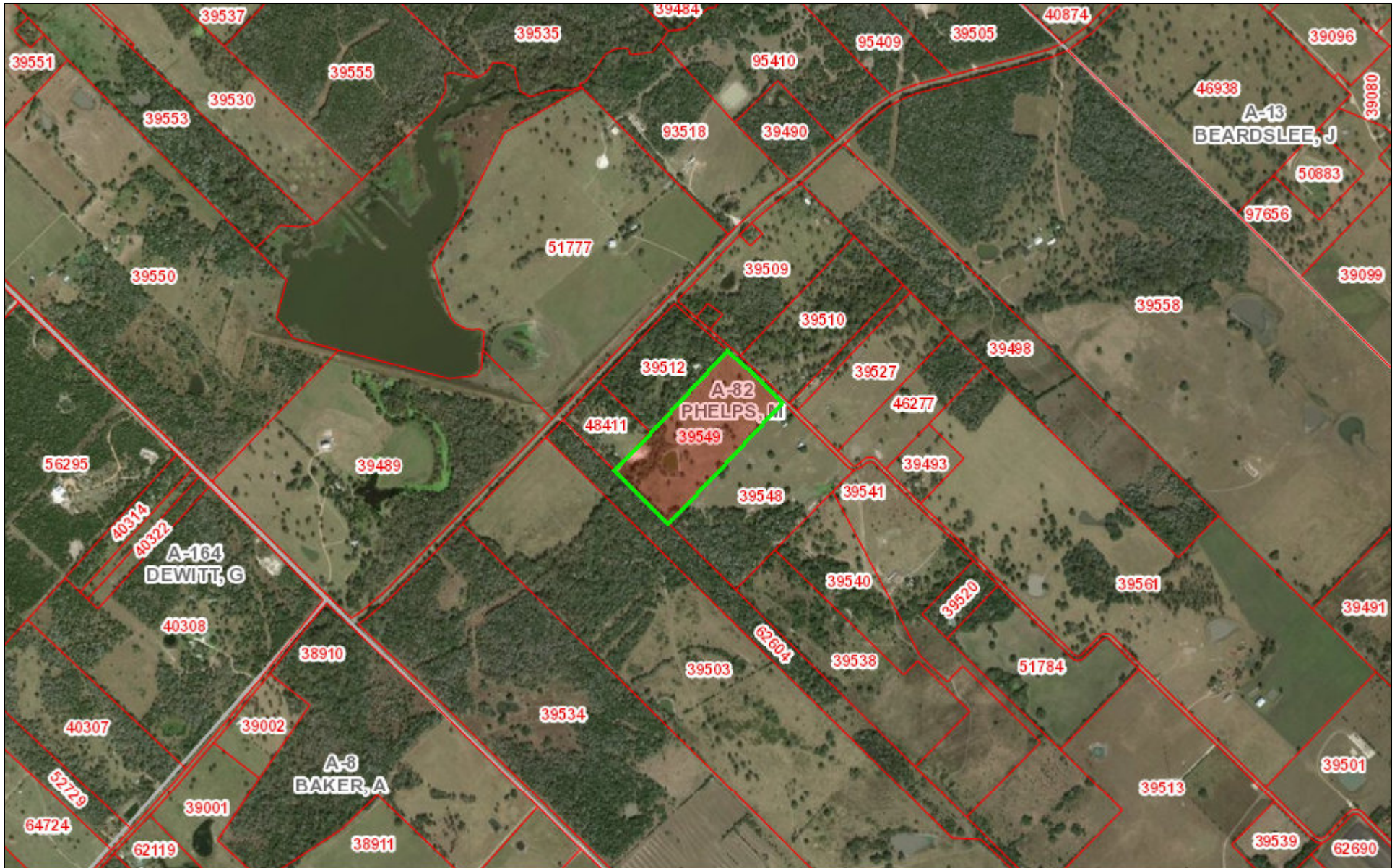




2811 Ullrich Rd

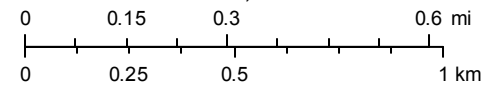


March 27, 2018

Disclaimer: This product is for informational purposes only and has not been prepared for or be suitable for legal, engineering, or surveying purposes. It does not represent an on-the-ground survey and represents only the approximate relative location of boundaries

-  Parcels
-  Abstracts

1:18,056



Source: Esri, DigitalGlobe, GeoEye, Earthstar Geographics, CNES/Airbus DS, USDA, USGS, AeroGRID, IGN, and the GIS User Community

Fayette County Appraisal District & BIS Consulting - www.bisconsultants.com

This product and relative contents are the property of the respective governmental entity and BIS Consultants. Use is restricted for official purposes.