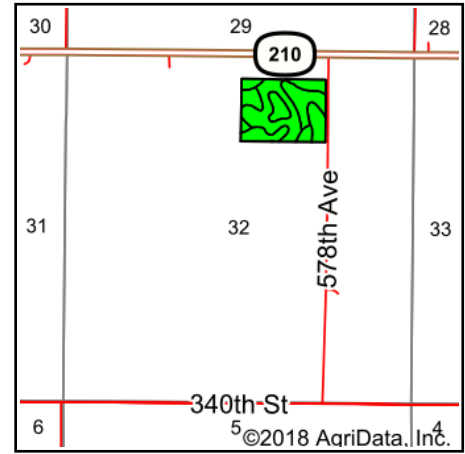
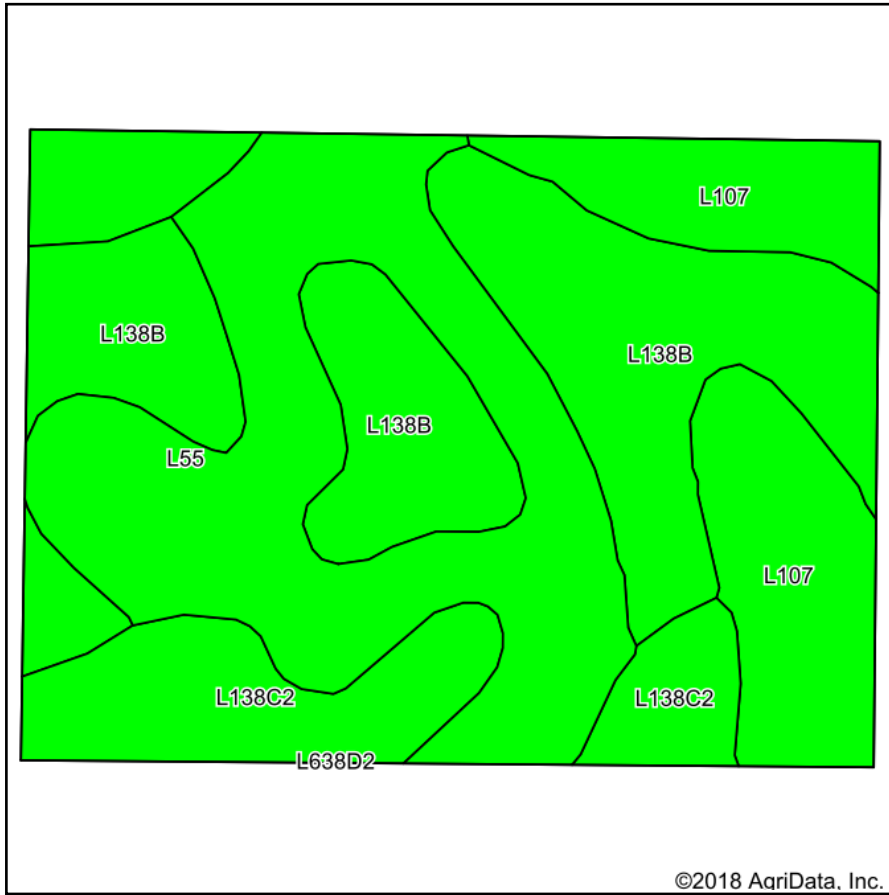


Tillable Soils Map



State: **Iowa**
 County: **Story**
 Location: **32-82N-23W**
 Township: **Union**
 Acres: **28**
 Date: **3/21/2018**

PEOPLES™
 COMPANY
 INNOVATIVE. REAL ESTATE. SOLUTIONS.

Maps Provided By:



Area Symbol: IA169, Soil Area Version: 28

Code	Soil Description	Acres	Percent of field	CSR2 Legend	Non-Irr Class *c	CSR2**	NCCPI Overall
L138B	Clarion loam, Bemis moraine, 2 to 6 percent slopes	9.38	33.5%		Ile	88	77
L55	Nicollet loam, 1 to 3 percent slopes	9.04	32.3%		Ie	91	82
L107	Webster clay loam, Bemis moraine, 0 to 2 percent slopes	5.83	20.8%		Ilw	88	80
L138C2	Clarion loam, Bemis moraine, 6 to 10 percent slopes, moderately eroded	3.75	13.4%		Ille	83	61
Weighted Average						88.3	77.1

**IA has updated the CSR values for each county to CSR2.

*c: Using Capabilities Class Dominant Condition Aggregation Method

Soils data provided by USDA and NRCS.