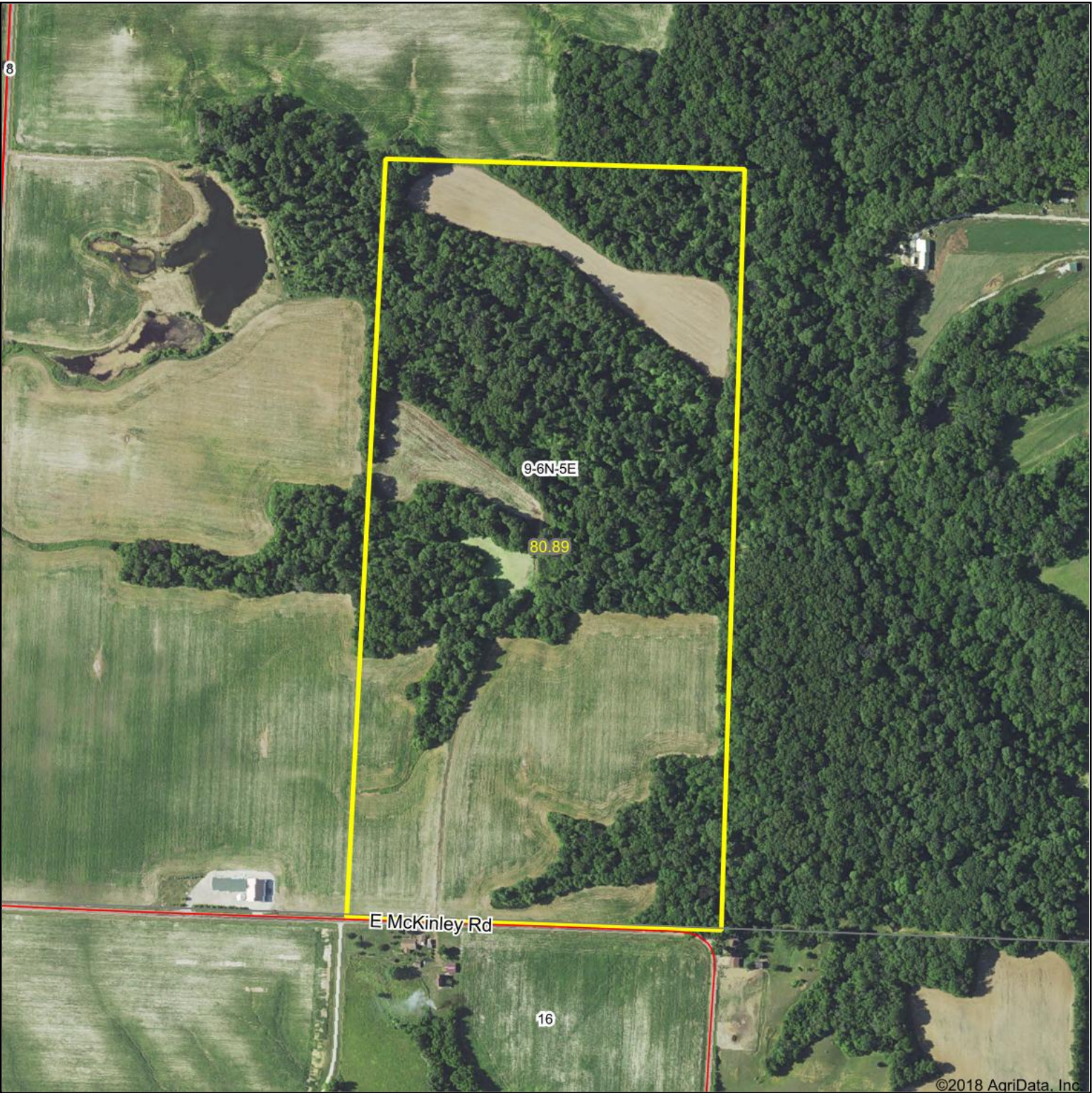


Aerial Map



©2018 AgriData, Inc.

map center: 40.513250, -89.946201



TROPHY
PROPERTIES AND AUCTION
LAND (RECREATIONAL) RESIDENTIAL

Maps Provided By:



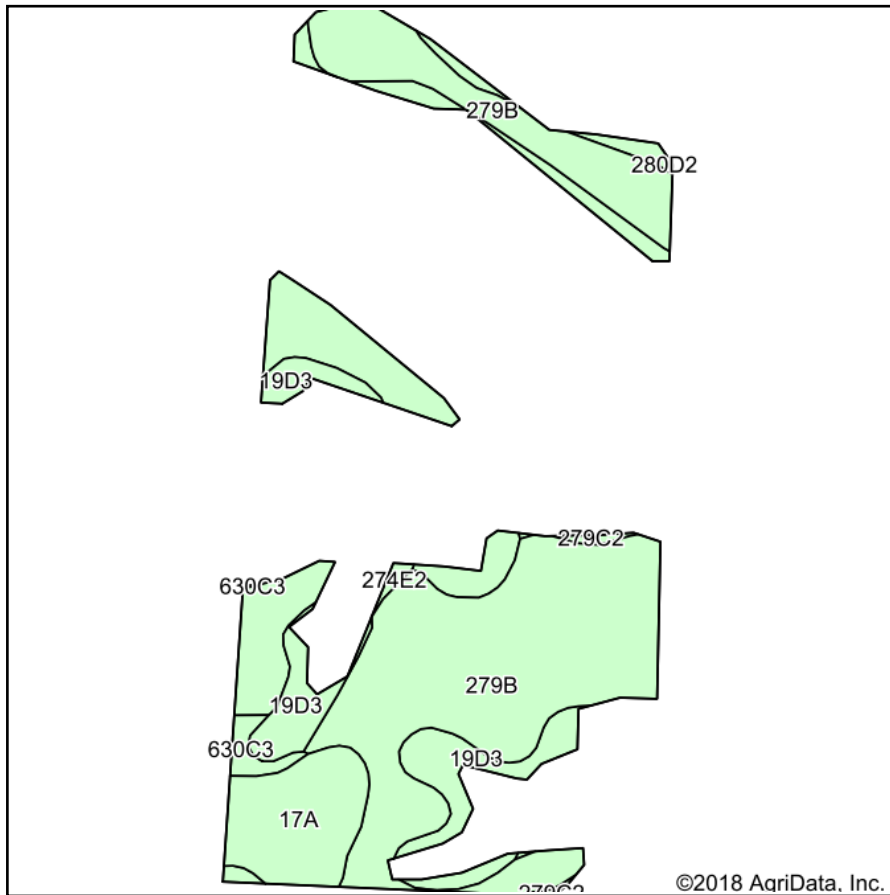
© AgriData, Inc. 2018 www.AgriDataInc.com

9-6N-5E
Fulton County
Illinois

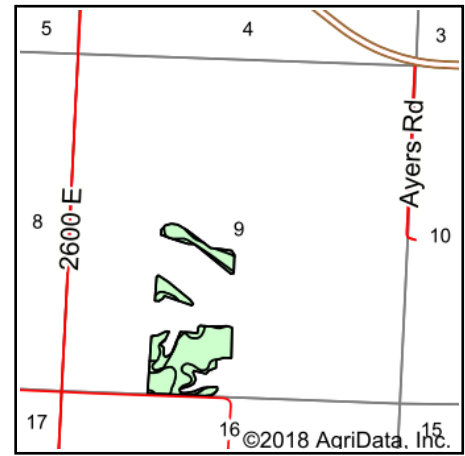


3/27/2018

Soils Map



Soils data provided by USDA and NRCS.



State: **Illinois**
 County: **Fulton**
 Location: **9-6N-5E**
 Township: **Banner**
 Acres: **31.12**
 Date: **3/27/2018**



Maps Provided By:



Area Symbol: IL057, Soil Area Version: 12

Code	Soil Description	Acres	Percent of field	Il. State Productivity Index Legend	Subsoil rooting a	Corn Bu/A	Soybeans Bu/A	Wheat Bu/A	Oats Bu/A b	Sorghum c	Alfalfa d hay, T/A	Grass-le gume e hay, T/A	Crop productivity index for optimum management
**279B	Rozetta silt loam, 2 to 5 percent slopes	21.23	68.2%		FAV	**162	**50	**64	**83	0	**5.22	0.00	**119
**19D3	Sylvan silty clay loam, 10 to 18 percent slopes, severely eroded	4.40	14.1%		FAV	**122	**40	**49	**57	0	**3.25	0.00	**90
17A	Keomah silt loam, 0 to 2 percent slopes	3.29	10.6%		FAV	161	51	65	83	0	0.00	5.14	119
**280D2	Fayette silt loam, glaciated, 10 to 18 percent slopes, eroded	1.47	4.7%		FAV	**149	**47	**59	**76	0	**4.69	0.00	**109
**630C3	Navlys silty clay loam, 5 to 10 percent slopes, severely eroded	0.44	1.4%		FAV	**120	**39	**47	**54	0	0.00	**3.99	**89
**279C2	Rozetta silt loam, 5 to 10 percent slopes, eroded	0.18	0.6%		FAV	**153	**47	**60	**78	0	**4.90	0.00	**112
**274E2	Seaton silt loam, 18 to 25 percent slopes, eroded	0.11	0.4%		FAV	**125	**38	**48	**64	0	**3.39	0.00	**90
Weighted Average						154.8	48.3	61.4	78.5	*	4.28	0.60	113.9

Table: Optimum Crop Productivity Ratings for Illinois Soil by K.R. Olson and J.M. Lang, Office of Research, ACES, University of Illinois at Champaign-Urbana. Version: 1/2/2012 Amended Table S2 B811

Crop yields and productivity indices for optimum management (B811) are maintained at the following NRES web site: <http://soilproductivity.nres.illinois.edu/>

** Indexes adjusted for slope and erosion according to Bulletin 811 Table S3

a UNF = unfavorable; FAV = favorable

b Soils in the southern region were not rated for oats and are shown with a zero "0".

c Soils in the northern region or in both regions were not rated for grain sorghum and are shown with a zero "0".

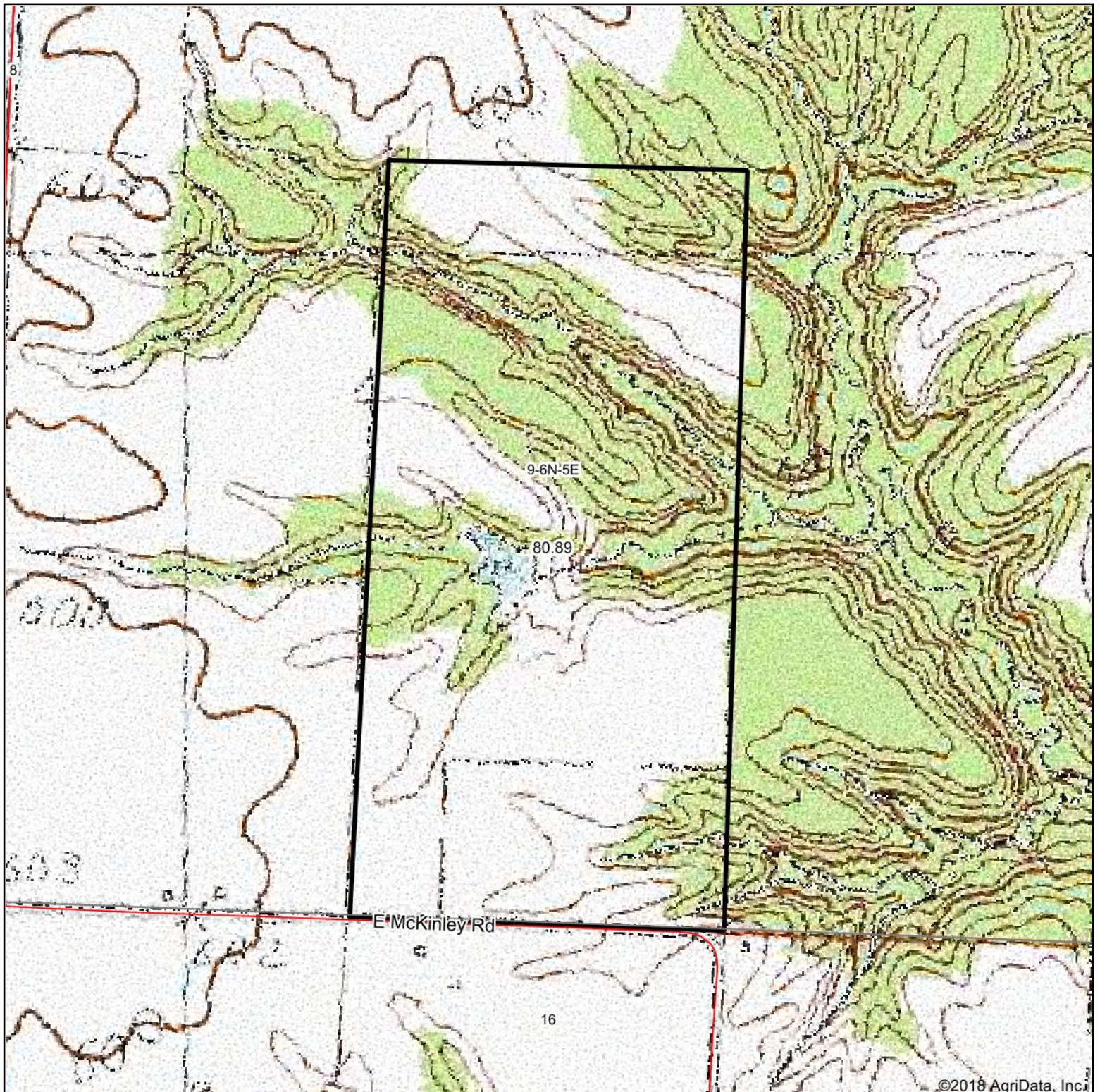
d Soils in the poorly drained group were not rated for alfalfa and are shown with a zero "0".

e Soils in the well drained group were not rated for grass-legume and are shown with a zero "0".

*c: Using Capabilities Class Dominant Condition Aggregation Method

Soils data provided by USDA and NRCS. Soils data provided by University of Illinois at Champaign-Urbana.

Topography Map



map center: 40.513250, -89.946201

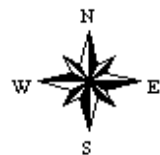
0ft 554ft 1109ft



Maps Provided By:



9-6N-5E
Fulton County
Illinois



3/27/2018