

200 +/- Acre Productive Farm Land for Sale

www.TrophyPA.com • 855.573.5263 • leads@trophyPA.com



PROPERTY ADDRESS:

51950 Audrain Lane
 Vandalia, MO 63382

PRICE: \$1,300,000

ACRES: 200

COUNTY: Ralls

PROPERTY DESCRIPTION:

Highly productive farm with high percentage tillable. 200 acres with 190 tillable and 3.4 of CRP. 86 % Class A soils. Mexico and Putnam. No fences or improvements. County road frontage on two sides.

PROPERTY HIGHLIGHTS:

- 200 +/- acres
- 190 +/- acres tillable ground
- 86% Putman and Mexico
- No improvements
- County Rd. frontage on two sides



PRESENTED BY:

FRANK WALLACE

Salesperson

M: (573) 470-0779

P: (855) 573-5263 x718

fwallace@trophyPA.com

Trophy Properties and Auction

15480 Clayton Road

Suite 101

Ballwin, MO 63011

www.TrophyPA.com

leads@trophyPA.com

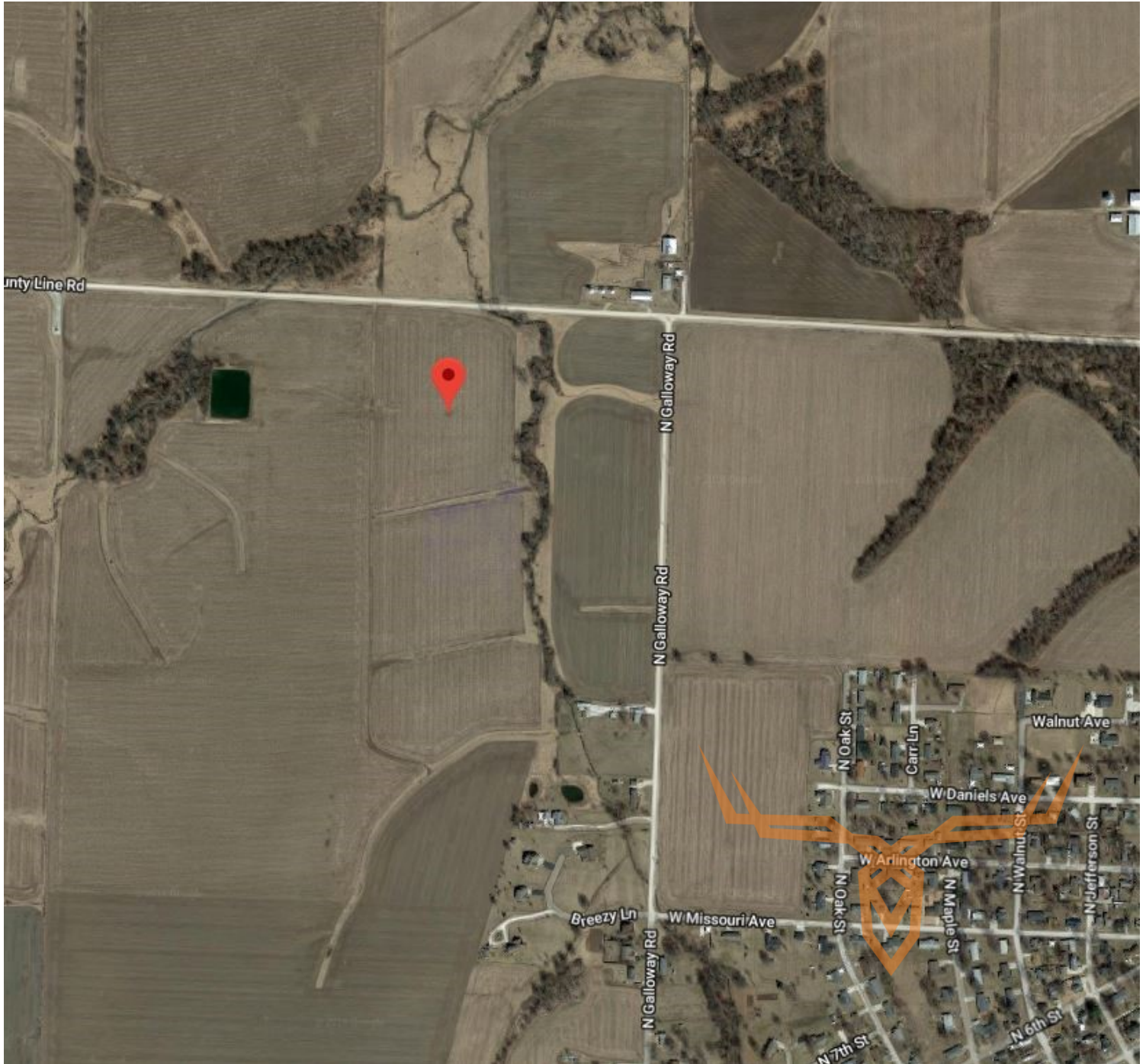


T R O P H Y
PROPERTIES AND AUCTION
LAND | RECREATIONAL | RESIDENTIAL

200 +/- Acre Productive Farm Land for Sale



www.TrophyPA.com • 855.573.5263 • leads@trohypa.com



Broker does not guarantee the accuracy of sq. ft., lot size, or other information, buyer is advised to independently verify the accuracy of information through personal inspection and with appropriate professionals

TAXES: \$577

TAX YEAR: 2017

