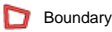
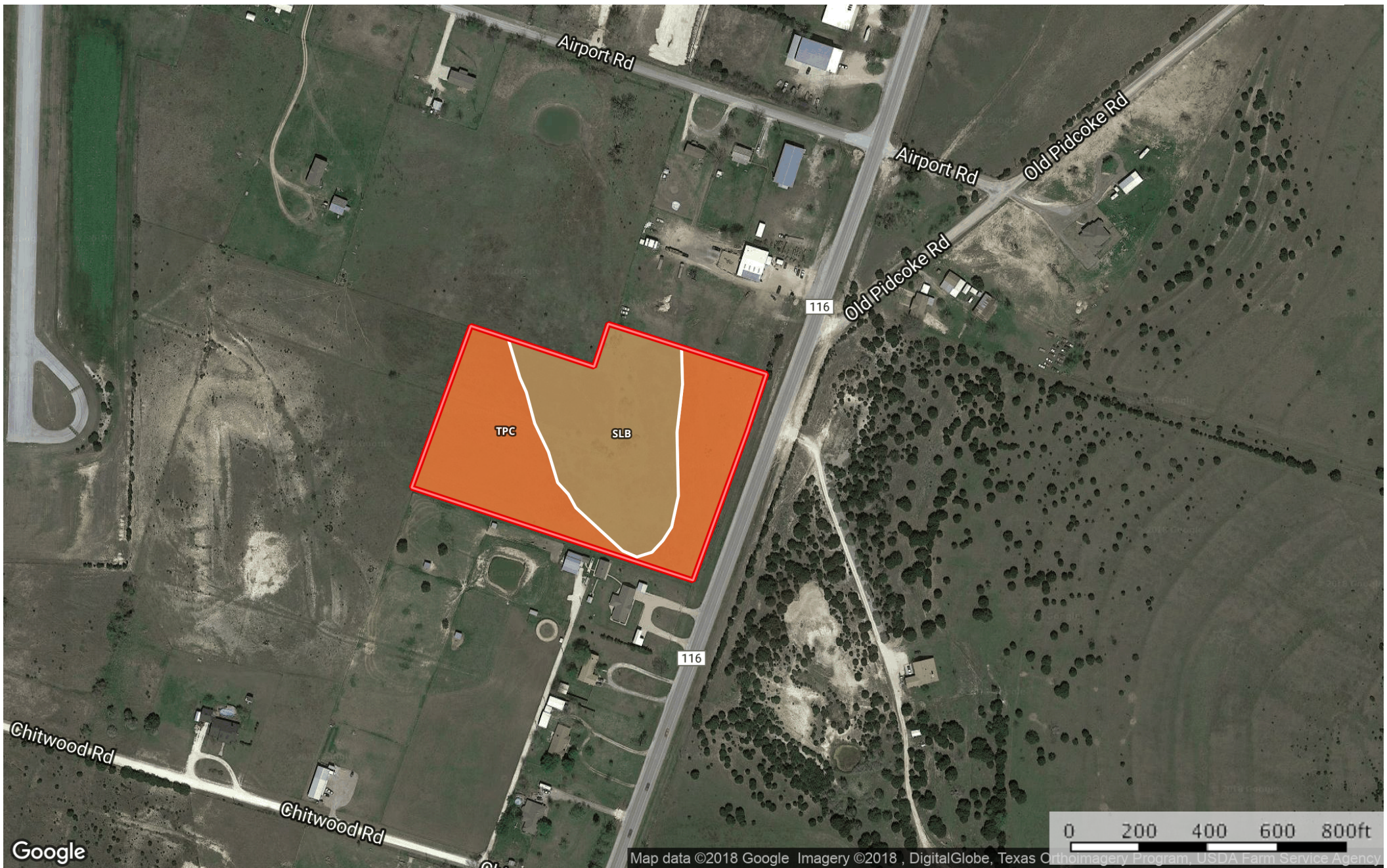


Grogan TBD FM 116 8+/- Acres
Coryell County, Texas, 27.95 AC +/-



Boundary



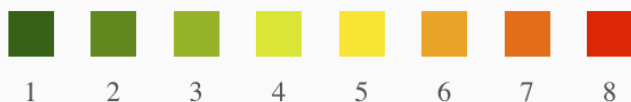
| SOIL CODE | SOIL DESCRIPTION | ACRES | % | CAP |
|-----------|---|-------|-------|------|
| SIB | Slidell silty clay, 0 to 2 percent slopes | 3.7 | 44.36 | 2e |
| TpC | Topsey-Pidcoke association, 2 to 8 percent slopes | 4.6 | 55.64 | 4e |
| TOTALS | | 8.3 | 100% | 3.11 |

Capability Legend

Increased Limitations and Hazards

Decreased Adaptability and Freedom of Choice Users

Land, Capability
Class(non-irrigated)



| | | | | | | | | |
|--------------|---|---|---|---|---|---|---|---|
| 'Wild Life' | • | • | • | • | • | • | • | • |
| Forestry | • | • | • | • | • | • | • | |
| Limited | • | • | • | • | • | • | • | |
| Moderate | • | • | • | • | • | • | | |
| Intense | • | • | • | • | • | | | |
| Limited | • | • | • | • | | | | |
| Moderate | • | • | • | | | | | |
| Intense | • | • | | | | | | |
| Very Intense | • | | | | | | | |

Grazing Cultivation

(c) climatic limitations (e) susceptibility to erosion
(s) soil limitations within the rooting zone (w) excess of water