



**Wolcott Ave/Camp St**

**6± Acres**

**Midland County | Midland, TX 79701**



**Presented By:**

**Caleb Matott, Broker/Owner**

**[RanchSpecialist@CMRanchRealEstate.com](mailto:RanchSpecialist@CMRanchRealEstate.com) | 432-349-3330**

6800 W. County Rd. 48 | Midland, TX 79707 | 432-219-2220 (main office) | [www.CMRanchRealEstate.com](http://www.CMRanchRealEstate.com)

### Property Details:

Approximate Building Sq. Ft.	n/a
Lot Size:	6± Acres
Current Zoning:	Commercial/Retail
County:	Midland

### Property Overview:

Prime Time Retail land perfect for hotels, restaurants, shopping center, etc. This ideal location is right off of I-20 and Hwy 349, right behind Tractor Supply, next to an apartment complex, down the street from other hotels, less than a block from restaurants, and approximately 1 block from Wal-Mart. Don't miss out on this amazing opportunity.

### Property Website

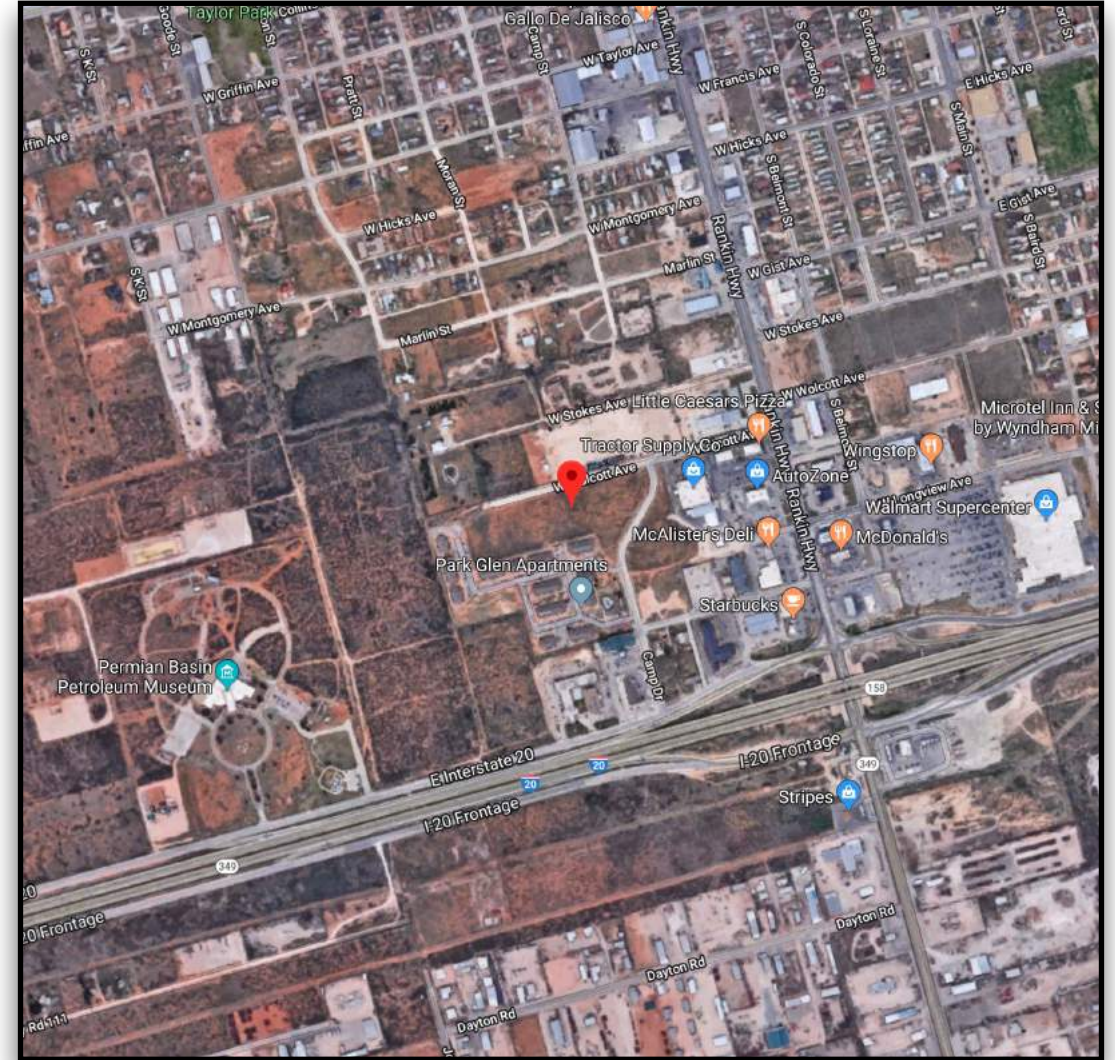
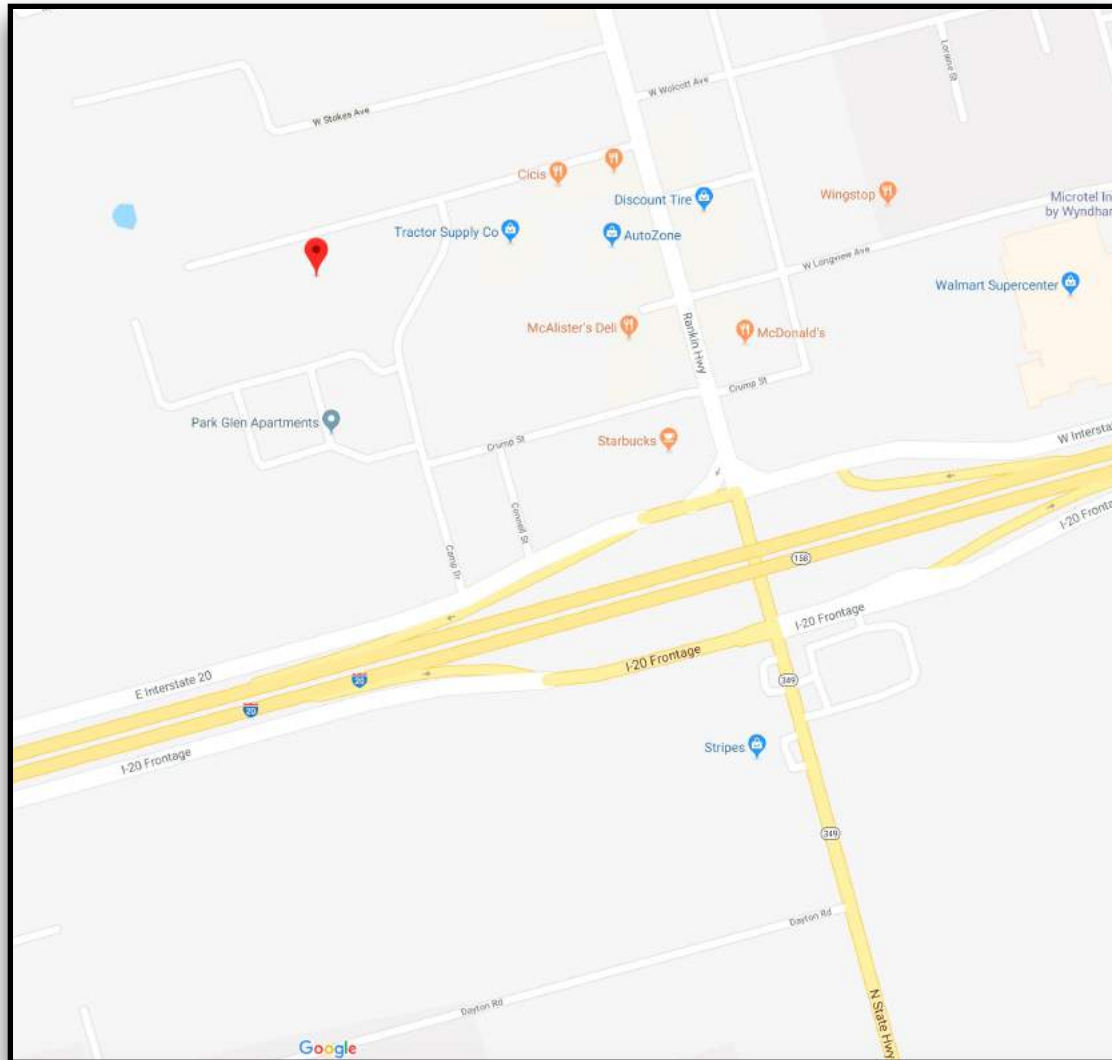


Presented By:  
**Caleb Matott, Broker/Owner**  
432-349-3330  
[BigDogRanchSales@mac.com](mailto:BigDogRanchSales@mac.com)

## CM Ranch Real Estate

6800 W. County Rd. 48 | Midland, TX 79707 | 432-219-2220 | [RanchSpecialist@CMRanchRealEstate.com](mailto:RanchSpecialist@CMRanchRealEstate.com)  
[www.CMRanchRealEstate.com](http://www.CMRanchRealEstate.com)





## Click for Interactive Property Map

Texas law requires all real estate licensees to give the following information about brokerage services to prospective buyers, tenants, sellers, & landlords.

### Information About Brokerage Services

**DISCLAIMER – This property offering is subject to prior sale, change in price, or removal from market without notice. While the information provided is deemed reliable, it is not guaranteed by Caleb Matott or CM Ranch Real Estate.**

Presented By:  
**Caleb Matott, Broker/Owner**  
432-349-3330  
BigDogRanchSales@mac.com

**CM Ranch Real Estate**  
6800 W. County Rd. 48 | Midland, TX 79707 | 432-219-2220 | [RanchSpecialist@CMRanchRealEstate.com](mailto:RanchSpecialist@CMRanchRealEstate.com)  
[www.CMRanchRealEstate.com](http://www.CMRanchRealEstate.com)