

S. DUNHAM A - 196

JAMES C. GRAHAM  
VOL. 38, PG. 77  
R.R.M.C.  
CALLED 155.98 ACRES

GEO W. TILLEY A - 734

THIRD TRACT  
VOL. 663, PG. 861  
M. C. D. R.  
CALLED 104.75 ACRES

T.J. ROBINSON  
A - 631

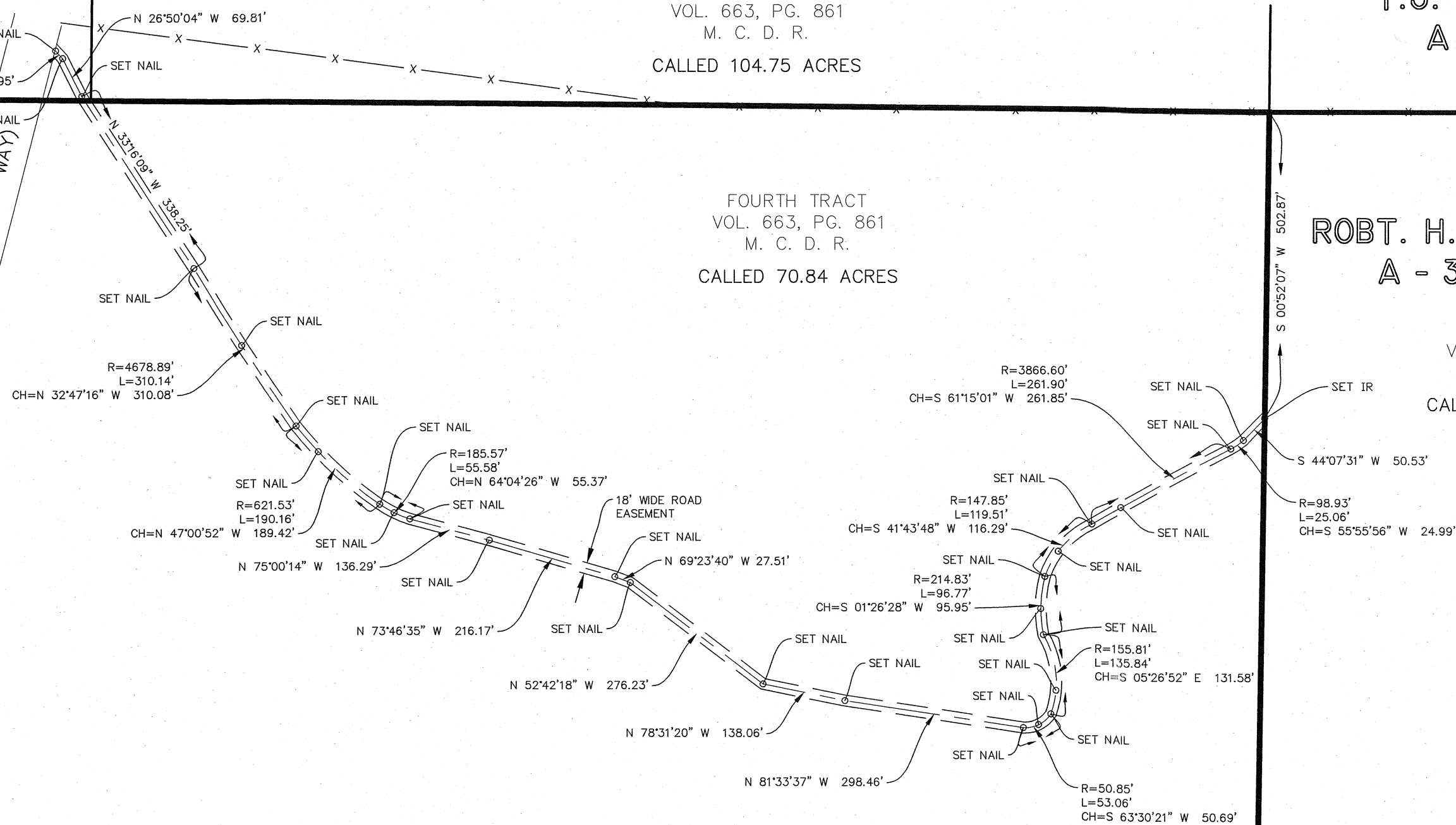
THOS. PUCKETT  
A - 607

FOURTH TRACT  
VOL. 663, PG. 861  
M. C. D. R.  
CALLED 70.84 ACRES

ROBT. H. GRIMES  
A - 300

FOURTH TRACT  
VOL. 663, PG. 861  
M. C. D. R.  
CALLED 255.26 ACRES

FM 677 (80' RIGHT-OF-WAY)



FIELD NOTES OF AN 18 FOOT WIDE ROAD EASEMENT ACROSS A CALLED 70.84 ACRE TRACT IN THE THOMAS PUCKETT SURVEY, A-607, AND ACROSS THE SOUTHEAST CORNER OF THE S. DUNHAM SURVEY, A-196, MONTAGUE COUNTY, TEXAS, SAID EASEMENT BEING 9 FEET EACH SIDE OF THE FOLLOWING DESCRIBED CENTERLINE:

BEGINNING at an iron rod set in the West line of the Robert H. Grimes Survey, A-300 and the East line of the Thomas Puckett Survey, A-607, Montague County, Texas, said rod bears S 00°52'07" W 502.87 feet from the Northwest corner of said Grimes Survey and the Northeast corner of said Puckett Survey as now occupied;

THENCE with the center of a 10 foot wide gravel road the following courses:

S 44°07'31" W 50.53 feet to a spike nail set;

Along a curve to the right with a radius of 98.93 feet for an arc length of 25.06 feet to a spike nail set (chord of this arc segment=S 55°55'56" W 24.99 feet);

Along a curve to the left with a radius of 3866.60 feet for an arc length of 261.90 feet to a spike nail set (chord of this arc segment=S 61°15'01" W 261.85 feet);

Along a curve to the left with a radius of 147.85 feet for an arc length of 119.51 feet to a spike nail set (chord of this arc segment=S 41°43'48" W 116.29 feet);

Along a curve to the left with a radius of 214.83 feet for an arc length of 96.77 feet to a spike nail set (chord of this arc segment=S 01°26'28" W 95.95 feet);

Along a curve to the right with a radius of 155.81 feet for an arc length of 135.84 feet to a spike nail set (chord of this arc segment=S 05°26'52" E 131.58 feet);

Along a curve to the right with a radius of 50.85 feet for an arc length of 53.06 feet to a spike nail set (chord of this arc segment=S 63°30'21" W 50.69 feet);

N 81°33'37" W a distance of 298.46 feet to a spike nail set;

N 78°31'20" W a distance of 138.06 feet to a spike nail set;

N 52°42'18" W a distance of 276.23 feet to a spike nail set;

N 69°23'40" W a distance of 27.51 feet to a spike nail set;

N 73°46'35" W a distance of 216.17 feet to a spike nail set;

N 75°00'14" W a distance of 136.29 feet to a spike nail set;

Along a curve to the right with a radius of 185.57 feet for an arc length of 55.58 feet to a spike nail set (chord of this arc segment=N 64°04'26" W 55.37 feet);

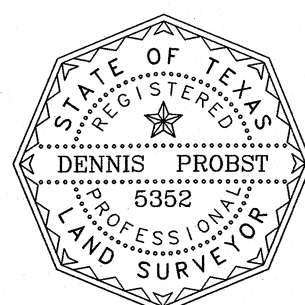
Along a curve to the right with a radius of 621.53 feet for an arc length of 190.16 feet to a spike nail set (chord of this arc segment=N 47°00'52" W 189.42 feet);

Along a curve to the right with a radius of 4678.89 feet for an arc length of 310.14 feet to a spike nail set (chord of this arc segment=N 32°47'16" W 310.08 feet);

N 33°16'09" W, crossing the North line of the Thomas Puckett Survey, A-607 and the South line of the S. Dunham Survey, A-196, a distance of 338.25 feet to a spike nail set;

N 26°50'04" W a distance of 69.81 feet to a spike nail set; and

N 42°55'13" W a distance of 16.95 feet to a spike nail set, in a gate in the East line of F.M. 677 for the end of this easement centerline.



*Dennis Probst* 2-25-15  
DENNIS PROBST  
REGISTERED PROFESSIONAL LAND SURVEYOR NO. 5352

EASEMENT SURVEY  
THOMAS PUCKETT SURVEY, A-607, &  
S. DUNHAM SURVEY, A-196,  
MONTAGUE COUNTY, TEXAS

DRAWN	DJM
CHECKED	DLP
APPROVED	DLP
PHONE (940)723-1455	
FAX (940)397-0549	

CORLETT, PROBST & BOYD, P.L.L.C.

ENGINEERS - SURVEYORS TBPE F-279  
4605 OLD JACKSBORO HIGHWAY  
WICHITA FALLS, TEXAS 76302

SCALE: 1" = 200'

FEBRUARY, 2015

SHEET 1 OF 1