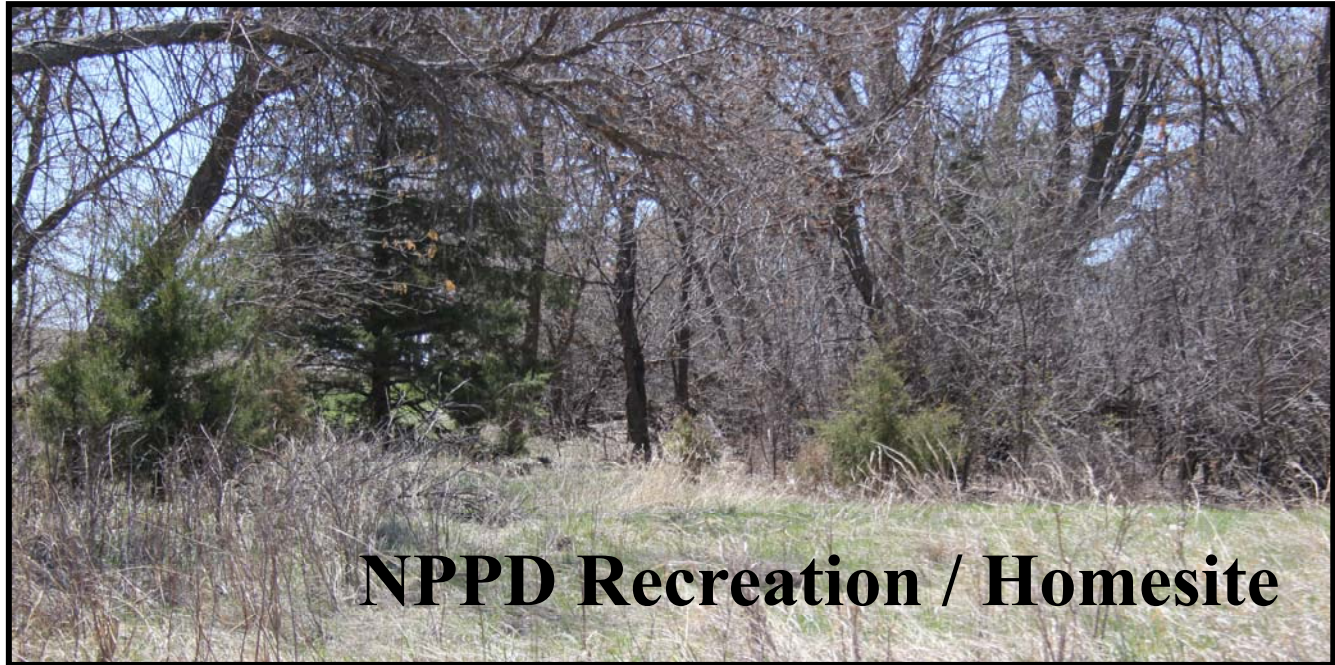


LAND FOR SALE



- Location:** 3 miles southwest of the Sutherland, Nebraska I-80 interchange on NE#25, which forms the south boundary. Antelope Road is located on the north boundary.
- Legal Description:** Part of NE1/4 Section 12-T13N-R34W, north of NE#25 in Lincoln County, Nebraska.
- Acres:** Estimated 60 tax assessed acres.
- Taxes:** Estimated 2017 real estate taxes \$1,000.
- Land Use:** Excellent wildlife / recreation property - Turkey, Deer, Pheasant. Portions developed to off-road track for bikes, motorcycles, 4-wheelers. Excellent location with several sites to develop your personal residence. Very good access from I-80, with abundant area hunting and fishing.
- Price:** \$95,000
- Comments:** Adjoining farms provide excellent food plots. Just out of Platte River Valley, next to Sutherland Reservoir with associated fishing & waterfowl hunting. The property includes several sites ideal for your perfect home.
- Contact:** **John Childears; Listing Agent 308-539-4450 or john@agriaffiliates.com**
Mike Polk, Don Walker, Dallas Dodson, Tony Eggleston, Brad Atkins, Bruce Dodson, Brian Reynolds, Chase Dodson



John Childears,
Listing Agent

Agri Affiliates - Providing Farm, Ranch Real Estate Services

Offered Exclusively By:



AGRI AFFILIATES, INC.
Providing Farm - Ranch Real Estate Services

NORTH PLATTE OFFICE

P.O. Box 1166
I-80 & US Hwy 83
North Platte, NE 69103
www.agriaffiliates.com

(308) 534-9240

Fax (308) 534-9244

Information contained herein was obtained from sources deemed reliable. We have no reason to doubt the accuracy, but the information is not guaranteed. Prospective Buyers should verify all information. All maps provided by Agri Affiliates, Inc. are approximations only, to be used as a general guideline, and not intended as survey accurate. As with any agricultural land, this property may include noxious weeds. Agri Affiliates, Inc. and all agents are acting as Agent of the Seller.



