

FOR SALE

87 Acres MOL

Home Site

Ranch Land & Recreational Property

Golinda, Falls County, TX 76655

\$391,500

For virtual tour and investment offering go to: www.texasfarmandranchrealty.com



Morgan Tindle (Agent)

254-721-9615 (mobile) 254-803-5263 (LAND)

Bob Dube (Broker)

512-423-6670 (mobile)

morgan@texasfarmandranchrealty.com

www.texasfarmandranchrealty.com

**FOR
SALE**

87 Acres MOL – Home Site Ranch Land and Recreation Property Golinda, Falls County, TX 76655

Property Highlights

Location – The property is located off County Road 427/ West Central in Golinda Texas. From Robinson head South on Hwy 77 towards Golinda. In Golinda turn right onto CR 427/ W Central travel for a quarter mile the property is located on the left. Located just 10 minutes from Waco, approximately 1.5 hours from Fort Worth, Texas, 1 hour 20 minutes from Austin and 2 hours 15 minutes from Houston.

Acres – 87 acres MOL according to Falls County Appraisal District.

Improvements- Property is covered in improved Coastal Bermuda. New fencing around the perimeter and a cross fencing. A pipe set of pens make it easy to gather livestock. Wide open grass land make it great for an investment opportunity.

Water – Golinda Water Supply services the area there is not a water meter on the property. There is one stock tank on the property.

Electricity –Heart of Texas Electric services the area there is not a meter on the property.

Soil – There are various soil types on the property. Please refer to the USDA Soil Map located in this brochure for soil types.

Minerals – Seller reserves all owned minerals.

Topography – The land is flat with gently rolling areas for a home site.

Current Use – Privately owned and is used for cattle grazing.

Ground Cover – Property is covered in improved grasses as well as some native grasses.

Easements – An abstract of title will need to be performed to determine all easements that may exist. Easements known are for utility.

Showings - By appointment only. If applicable, buyers who are represented by an agent/broker must have its agent/broker present at all showings to participate in any co-brokerage commissions.

Presented At - \$391,500.00- \$4,500 an acre

Texas Farm and Ranch Realty dba Dube's Commercial, Inc., does not make any representations or warranties expressed or implied as to the accuracy of this information. All sources are deemed reliable.



Morgan Tindle (Agent) 254-721-9615 (mobile) 254-803-5263 (LAND)

Bob Dube (Broker) 512-423-6670 (mobile)

morgan@texasfarmandranchrealty.com www.texasfarmandranchrealty.com

**FOR
SALE**

**87 Acres MOL – Home Site
Ranch Land and Recreation Property
Golinda, Falls County, TX 76655**

Property Pictures



Morgan Tindle (Agent)

254-721-9615 (mobile) 254-803-5263 (LAND)

Bob Dube (Broker)

512-423-6670 (mobile)

morgan@texasfarmandranchrealty.com

www.texasfarmandranchrealty.com

**FOR
SALE**

**87 Acres MOL – Home Site
Ranch Land and Recreation Property
Golinda, Falls County, TX 76655**

Property Aerial View



— "Stewards of Land" —
A DBA of Dube's Commercial, Inc. TREC# 484723

Morgan Tindle (Agent) 254-721-9615 (mobile) 254-803-5263 (LAND)

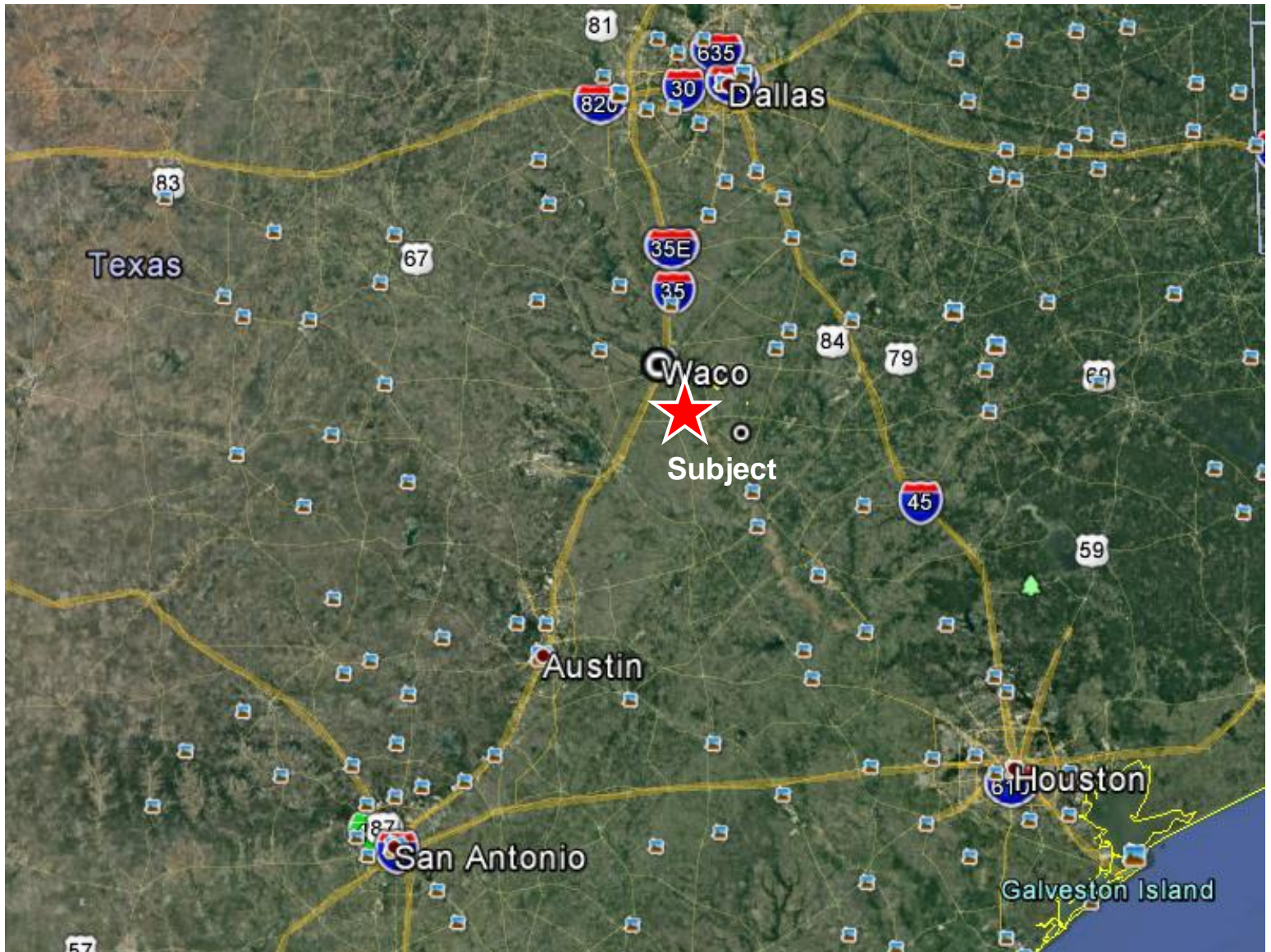
Bob Dube (Broker) 512-423-6670 (mobile)

morgan@texasfarmandranchrealty.com www.texasfarmandranchrealty.com

**FOR
SALE**

**87 Acres MOL – Home Site
Ranch Land and Recreation Property
Golinda, Falls County, TX 76655**

**Property Location Relative to
DFW, Austin and Houston**



—“Stewards of Land”—
A DBA of Dube’s Commercial, Inc. TREC# 484723

Morgan Tindle (Agent) 254-721-9615 (mobile) 254-803-5263 (LAND)

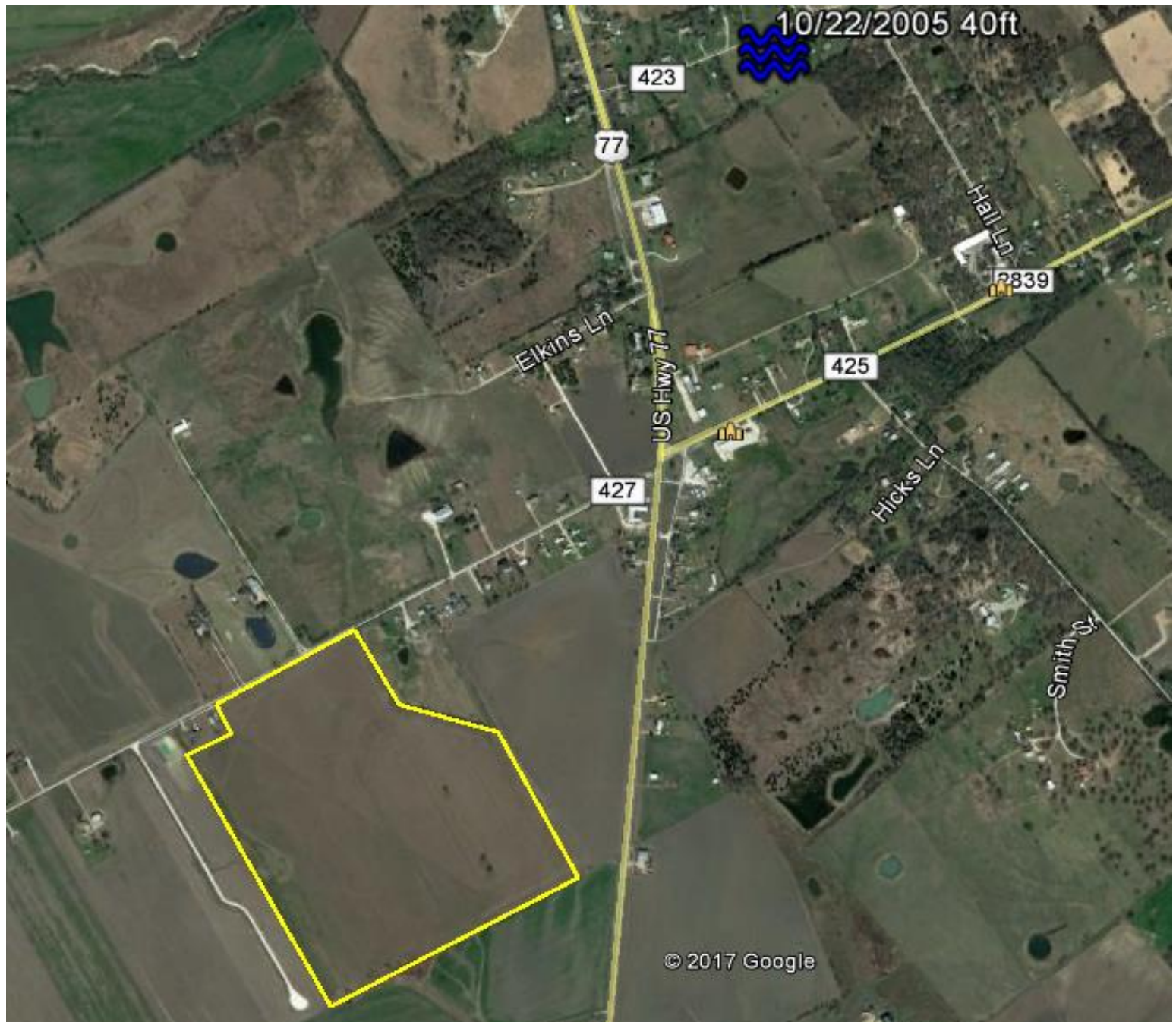
Bob Dube (Broker) 512-423-6670 (mobile)

morgan@texasfarmandranchrealty.com www.texasfarmandranchrealty.com

**FOR
SALE**

**87 Acres MOL – Home Site
Ranch Land and Recreation Property
Golinda, Falls County, TX 76655**

Aerial of Water Well Nearest Property



**FOR
SALE**

87 Acres MOL – Home Site Ranch Land and Recreation Property Golinda, Falls County, TX 76655

Soil Map Aerial



Morgan Tindle (Agent)

254-721-9615 (mobile) 254-803-5263 (LAND)

Bob Dube (Broker)

512-423-6670 (mobile)

morgan@texasfarmandranchrealty.com

www.texasfarmandranchrealty.com

**FOR
SALE**

**87 Acres MOL – Home Site
Ranch Land and Recreation Property
Golinda, Falls County, TX 76655**

Soil Type Legend

Map Unit Symbol	Map Unit Name	Acres in AOI	Percent of AOI
29	Heiden clay, 1 to 3 percent slopes	14.8	16.9%
30	Heiden clay, 3 to 5 percent slopes	2.1	2.4%
35	Houston Black clay, 1 to 3 percent slopes	70.7	80.7%
Totals for Area of Interest		87.6	100.0%



– "Stewards of Land"
A DBA of Dube's Commercial, Inc. TREC# 484723

Morgan Tindle (Agent) 254-721-9615 (mobile) 254-803-5263 (LAND)

Bob Dube (Broker) 512-423-6670 (mobile)

morgan@texasfarmandranchrealty.com www.texasfarmandranchrealty.com

**FOR
SALE**

87 Acres MOL – Home Site Ranch Land and Recreation Property Golinda, Falls County, TX 76655

Soil Type – 29

29—Heiden clay, 1 to 3 percent slopes. This deep, well drained, gently sloping soil is on narrow ridges and foot slopes of the uplands. Slopes are convex. Areas are long and are narrow to broad. They range from 10 to about 120 acres in size.

This soil has a surface layer of dark grayish brown, moderately alkaline clay about 21 inches thick. Between depths of 21 to 45 inches is grayish brown, moderately alkaline clay that has light yellowish brown mottles. The underlying material, to a depth of 80 inches, is yellow, moderately alkaline shaly clay.

This soil is difficult to work. When wet, it is sticky; when dry, it is hard and clods when plowed. Dense plowpan layers are common in cultivated areas. Permeability is very slow, and available water capacity is high. The root zone is deep, but penetration by roots is slow. Runoff is medium. The hazard of water erosion is moderate.

Included with this soil in mapping are small areas of Houston Black, Branyon, and Trinity soils. The Branyon soils occupy stream terraces and the Trinity soils are on flood plains. Houston Black soils are intermingled irregularly. The included soils make up 10 to 20 percent of this map unit.

This soil is used mainly for crops. The potential for crops is high. Cotton and grain sorghum are the main crops, but corn and small grain are also grown. The main objectives of management are controlling erosion and improving tilth. Terracing and growing crops that produce large amounts of residue help control erosion and maintain tilth.

This soil has high potential for pasture. It is well suited to improved bermudagrass, kleingrass, and King Ranch bluestem. Proper pasture management includes fertilization, weed control, and controlled grazing.

This soil has high potential for range, but very few acres are used for this purpose. The climax plant community is tall grasses and an overstory of a few large live oak, elm, and hackberry trees along drainageways.

This soil has low potential for most urban uses. The limitations that affect urban development are the shrinking and swelling with changes in moisture, corrosivity to uncoated steel, and slow percolation. The potential for recreation is low. The most restrictive limitations for this use are the clayey surface layer and the very slow permeability. Potential for openland wildlife habitat is medium, and potential for rangeland wildlife habitat is low. Capability subclass IIe; Blackland range site.



— "Stewards of Land"
A DBA of Dube's Commercial, Inc. TREC# 484723

Morgan Tindle (Agent)

254-721-9615 (mobile) 254-803-5263 (LAND)

Bob Dube (Broker)

512-423-6670 (mobile)

morgan@texasfarmandranchrealty.com

www.texasfarmandranchrealty.com

**FOR
SALE**

87 Acres MOL – Home Site Ranch Land and Recreation Property Golinda, Falls County, TX 76655

Soil Type – 30

30—Heiden clay, 3 to 5 percent slopes. This deep, well drained, gently sloping soil is on uplands. Slopes are convex. Areas are long and narrow and range from 5 to 20 acres in size.

The surface layer of this soil, to a depth of 20 inches, is dark grayish brown, moderately alkaline clay. Between depths of 20 and 41 inches is olive, moderately alkaline clay. The underlying layer, to a depth of 80 inches, is yellow, moderately alkaline clay that has olive yellow mottles.

This soil is difficult to work. When wet, it is sticky and plastic; when dry, it is hard and clods when plowed. Dense plowpan layers are common in cultivated areas. The permeability is very slow, and the available water capacity is high. The root zone is deep, but penetration by roots is slow. Runoff is slow. The hazard of water erosion is moderately severe.

Included with this soil in mapping are small areas of Ferris, Houston Black, Burleson, and Trinity soils. The Ferris soils occupy gullies and steeper side slopes. The Houston Black and Burleson soils are on less sloping parts of the landscape and the Trinity soils occupy flood plains. The included soils make up 10 percent of this map unit.

This soil is used about equally for crops and pasture. It has medium potential for production of crops, but it is limited by slope. Grain sorghum, cotton, and small grain are the main crops. The main objectives of management are controlling erosion and improving tilth. Terracing and growing crops that produce large amounts of residue help control erosion and maintain soil tilth.

This soil has high potential for pasture. It is well suited to improved bermudagrass, kleingrass, and King Ranch bluestem. Pasture management includes fertilization, weed control, and controlled grazing.

This soil has high potential for range, but very few acres are used for this purpose. The climax plant community is tall grasses and an overstory of a few large live oak, elm, and hackberry trees along drainageways.

This soil has low potential for most urban uses. The limitations that affect urban development are the shrinking and swelling with changes in moisture, corrosivity to uncoated steel, and slow percolation. The potential for recreation is low. The clayey surface layer and the very slow permeability are the most restrictive limitations for this use. Potential for openland wildlife habitat is medium, and potential for rangeland wildlife habitat is low. Capability subclass IIIe; Blackland range site.



—“Stewards of Land”
A DBA of Dube’s Commercial, Inc. TREC# 484723

Morgan Tindle (Agent) 254-721-9615 (mobile) 254-803-5263 (LAND)

Bob Dube (Broker) 512-423-6670 (mobile)

morgan@texasfarmandranchrealty.com www.texasfarmandranchrealty.com

**FOR
SALE**

87 Acres MOL – Home Site Ranch Land and Recreation Property Golinda, Falls County, TX 76655

Soil Type – 35

35—Houston Black clay, 1 to 3 percent slopes. This deep, moderately well drained, gently sloping soil is on smooth ridges on foot slopes of uplands. Slopes are convex. Areas are long and narrow to broad in shape and range from 10 to 50 acres in size.

The soil has a surface layer of very dark gray, moderately alkaline clay to a depth of 28 inches. The next layer is dark gray, moderately alkaline clay to a depth of 48 inches. Between depths of 48 and 67 inches is olive gray, moderately alkaline clay. The underlying layer, to a depth of 80 inches, is olive yellow and light brownish gray, moderately alkaline clay that has brownish yellow mottles.

This soil is difficult to work. When wet, it is sticky; when dry, it is hard and clods when plowed. Dense plow-pan layers are common in cultivated areas. Permeability is very slow, and available water capacity is high. The root zone is deep, but penetration by roots is slow. Runoff is medium. The hazard of water erosion is moderate.

Included with this soil in mapping are small areas of Branyon, Burleson, and Heiden soils. The Branyon soils are on stream terraces. The Burleson and Heiden soils have no particular pattern of occurrence. The included soils make up 10 to 20 percent of this map unit.

This soil is used mainly for crops. The potential for growing crops is high. Cotton and grain sorghum are the main crops, but corn and small grain are also grown. The main objectives of management are controlling erosion and improving tilth. Growing crops that produce large amounts of residue or growing deep-rooted legumes help control erosion and maintain the tilth.

This soil has high potential for pasture. It is well suited to improved bermudagrass, kleingrass, and King Ranch bluestem. Proper pasture management includes fertilization, weed control, and controlled grazing.

This soil has high potential for range, but very few acres are used for this purpose. The climax plant community is tall grasses and an overstory of a few large live oak, elm, and hackberry trees along the drainageways.

This soil has low potential for most urban uses. Its most restrictive limitations are shrinking and swelling with changes in moisture, corrosivity to uncoated steel, low strength, and slow percolation.

The potential for recreation is low. The clayey surface layer and the very slow permeability are the most restrictive limitations for this use. Potential for both openland and rangeland wildlife habitat is medium. Capability sub-class IIe; Blackland range site.



— "Stewards of Land"
A DBA of Dube's Commercial, Inc. TREC# 484723

Morgan Tindle (Agent)

254-721-9615 (mobile) 254-803-5263 (LAND)

Bob Dube (Broker)

512-423-6670 (mobile)

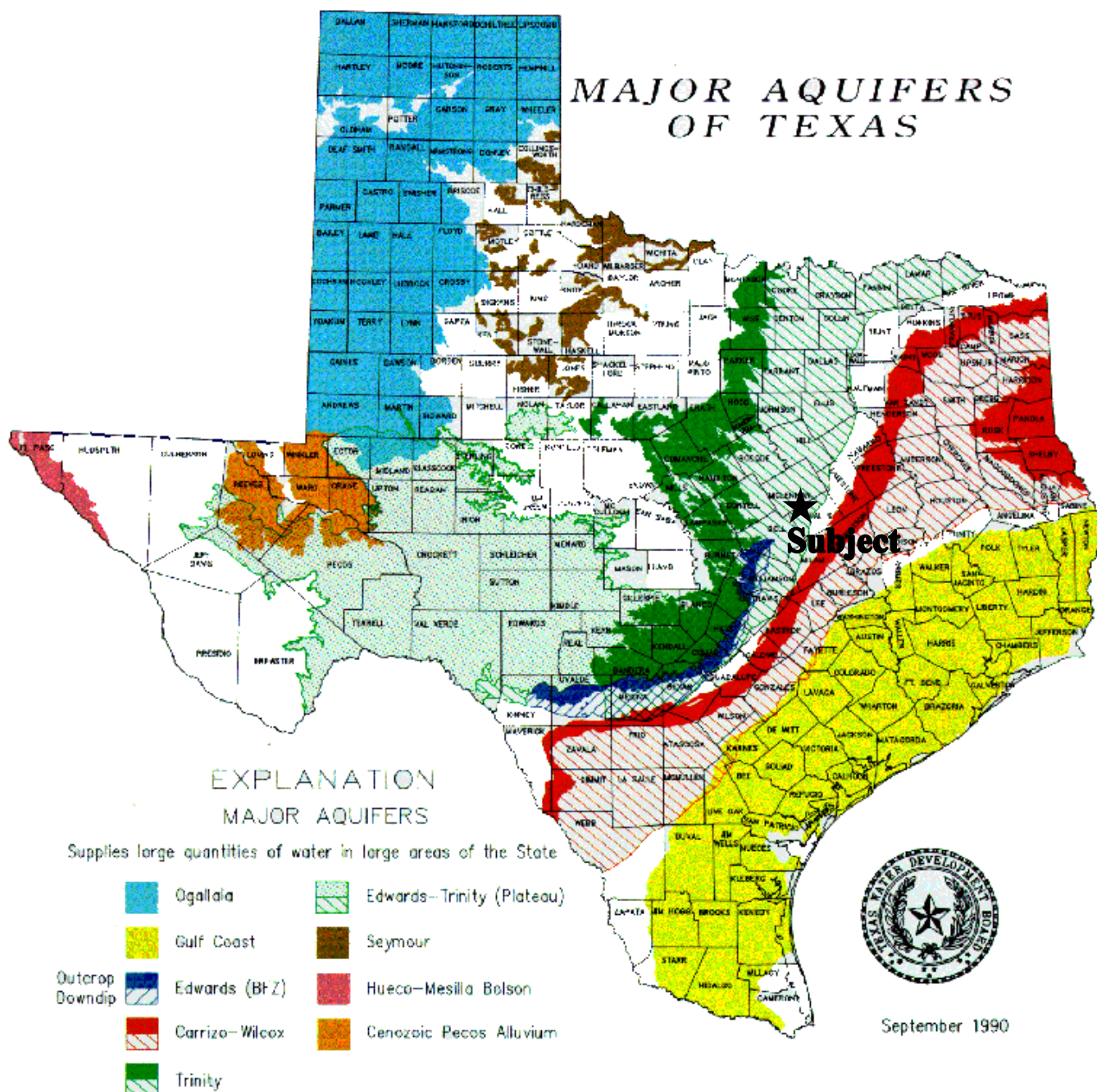
morgan@texasfarmandranchrealty.com

www.texasfarmandranchrealty.com

**FOR
SALE**

87 Acres MOL – Home Site Ranch Land and Recreation Property Golinda, Falls County, TX 76655

Property Location to Major Aquifers of Texas



TEXAS
FARM & RANCH REALTY

—“Stewards of Land”—
A DBA of Dube’s Commercial, Inc. TREC# 484723

Morgan Tindle (Agent)

254-721-9615 (mobile) 254-803-5263 (LAND)

Bob Dube (Broker)

512-423-6670 (mobile)

morgan@texasfarmandranchrealty.com

www.texasfarmandranchrealty.com

**FOR
SALE**

87 Acres MOL – Home Site Ranch Land and Recreation Property Golinda, Falls County, TX 76655

CONFIDENTIALITY & DISCLAIMER

The information contained in the following Investment Brochure is proprietary and strictly confidential. It is intended to be reviewed only by the party receiving it from Dube's Commercial Inc. and should not be made available to any other person or entity without the written consent of Dube's Commercial Inc. This Investment Brochure has been prepared to provide summary information to prospective investors, and to establish only a preliminary level of interest in the subject property. The information contained herein is not a substitute for a thorough due diligence investigation. Dube's Commercial Inc. makes no warranty or representation, with respect to the income or expenses for the subject property, the future projected financial performance of the property, the size and square footage of the property and improvements, the presence or absence of contaminating substances, PCB's or asbestos, the compliance with State and Federal regulations, the physical condition of the improvements thereon, or the financial condition or business prospects of any tenant, or any tenant's plans or intentions to continue its occupancy of the subject property. The information contained in this Investment Brochure has been obtained from sources we believe to be reliable; however, Dube's Commercial Inc. makes no warranty or representation whatsoever regarding the accuracy or completeness of the information provided.

**THE TEXAS REAL ESTATE COMMISSION (TREC) REGULATES
REAL ESTATE BROKERS AND SALES AGENTS, REAL ESTATE INSPECTORS,
HOME WARRANTY COMPANIES, EASEMENT AND RIGHT-OF-WAY AGENTS
AND TIMESHARE INTEREST PROVIDERS**

**YOU CAN FIND MORE INFORMATION AND
CHECK THE STATUS OF A LICENSE HOLDER AT
WWW.TREC.TEXAS.GOV**

**YOU CAN SEND A COMPLAINT AGAINST A LICENSE HOLDER TO TREC
A COMPLAINT FORM IS AVAILABLE ON THE TREC WEBSITE**

**TREC ADMINISTERS TWO RECOVERY FUNDS WHICH MAY BE USED TO
SATISFY A CIVIL COURT JUDGMENT AGAINST A BROKER, SALES AGENT,
REAL ESTATE INSPECTOR, OR EASEMENT OR RIGHT-OF-WAY AGENT,
IF CERTAIN REQUIREMENTS ARE MET**

**IF YOU HAVE QUESTIONS OR ISSUES ABOUT THE ACTIVITIES OF
A LICENSE HOLDER, THE COMPLAINT PROCESS OR THE
RECOVERY FUNDS, PLEASE VISIT THE WEBSITE OR CONTACT TREC AT**



**TEXAS REAL ESTATE COMMISSION
P.O. BOX 12188
AUSTIN, TEXAS 78711-2188
(512) 936-3000**



Morgan Tindle (Agent) 254-721-9615 (mobile) 254-803-5263 (LAND)

Bob Dube (Broker) 512-423-6670 (mobile)

morgan@texasfarmandranchrealty.com www.texasfarmandranchrealty.com



Information About Brokerage Services

11-2-2015

Texas law requires all real estate license holders to give the following information about brokerage services to prospective buyers, tenants, sellers and landlords.

TYPES OF REAL ESTATE LICENSE HOLDERS:

- A **BROKER** is responsible for all brokerage activities, including acts performed by sales agents sponsored by the broker.
- A **SALES AGENT** must be sponsored by a broker and works with clients on behalf of the broker.

A BROKER'S MINIMUM DUTIES REQUIRED BY LAW (A client is the person or party that the broker represents):

- Put the interests of the client above all others, including the broker's own interests;
- Inform the client of any material information about the property or transaction received by the broker;
- Answer the client's questions and present any offer to or counter-offer from the client; and
- Treat all parties to a real estate transaction honestly and fairly.

A LICENSE HOLDER CAN REPRESENT A PARTY IN A REAL ESTATE TRANSACTION:

AS AGENT FOR OWNER (SELLER/LANDLORD): The broker becomes the property owner's agent through an agreement with the owner, usually in a written listing to sell or property management agreement. An owner's agent must perform the broker's minimum duties above and must inform the owner of any material information about the property or transaction known by the agent, including information disclosed to the agent or subagent by the buyer or buyer's agent.

AS AGENT FOR BUYER/TENANT: The broker becomes the buyer/tenant's agent by agreeing to represent the buyer, usually through a written representation agreement. A buyer's agent must perform the broker's minimum duties above and must inform the buyer of any material information about the property or transaction known by the agent, including information disclosed to the agent by the seller or seller's agent.

AS AGENT FOR BOTH - INTERMEDIARY: To act as an intermediary between the parties the broker must first obtain the written agreement of *each party* to the transaction. The written agreement must state who will pay the broker and, in conspicuous bold or underlined print, set forth the broker's obligations as an intermediary. A broker who acts as an intermediary:

- Must treat all parties to the transaction impartially and fairly;
- May, with the parties' written consent, appoint a different license holder associated with the broker to each party (owner and buyer) to communicate with, provide opinions and advice to, and carry out the instructions of each party to the transaction.
- Must not, unless specifically authorized in writing to do so by the party, disclose:
 - that the owner will accept a price less than the written asking price;
 - that the buyer/tenant will pay a price greater than the price submitted in a written offer; and
 - any confidential information or any other information that a party specifically instructs the broker in writing not to disclose, unless required to do so by law.

AS SUBAGENT: A license holder acts as a subagent when aiding a buyer in a transaction without an agreement to represent the buyer. A subagent can assist the buyer but does not represent the buyer and must place the interests of the owner first.

TO AVOID DISPUTES, ALL AGREEMENTS BETWEEN YOU AND A BROKER SHOULD BE IN WRITING AND CLEARLY ESTABLISH:

- The broker's duties and responsibilities to you, and your obligations under the representation agreement.
- Who will pay the broker for services provided to you, when payment will be made and how the payment will be calculated.

LICENSE HOLDER CONTACT INFORMATION: This notice is being provided for information purposes. It does not create an obligation for you to use the broker's services. Please acknowledge receipt of this notice below and retain a copy for your records.

Buyers who are represented by an agent/broker must have their agent/broker actively involved and present at all showings to participate in any co-broker commissions.

<u>Dube's Commercial, Inc.</u>	<u>484723</u>	<u>bob@dubescmercial.com</u>	<u>(512) 671-8008</u>
Licensed Broker/Broker Firm Name or Primary Assumed Business Name	License No.	Email	Phone
<u>Robert T. Dube</u>	<u>365515</u>	<u>bob@dubescmercial.com</u>	<u>(512) 671-8008</u>
Designated Broker of Firm	License No.	Email	Phone
<u>Robert T. Dube</u>	<u>365515</u>	<u>bob@dubescmercial.com</u>	<u>(284) 803-5263</u>
Licensed Supervisor of Sales Agent/ Associate	License No.	Email	Phone
<u>Morgan Tindle</u>	<u>644820</u>	<u>morgan@texasfarmandranchrealt</u>	<u>(254) 803-5263</u>
Sales Agent/Associate's Name	License No.	y.com Email	Phone

Buyer/Tenant/Seller/Landlord Initials

Date

Regulated by the Texas Real Estate Commission

Information available at www.trec.texas.gov

TAR 2501

ABS 1-0

Dube's Commercial Inc 401 Congress Austin, TX 78701
Robert Dube

Phone: (512)423-6670

Fax: (512)671-8011

Info about Bro

Produced with zipForm® by zipLogix 18070 Fifteen Mile Road, Fraser, Michigan 48026 www.ziplogix.com