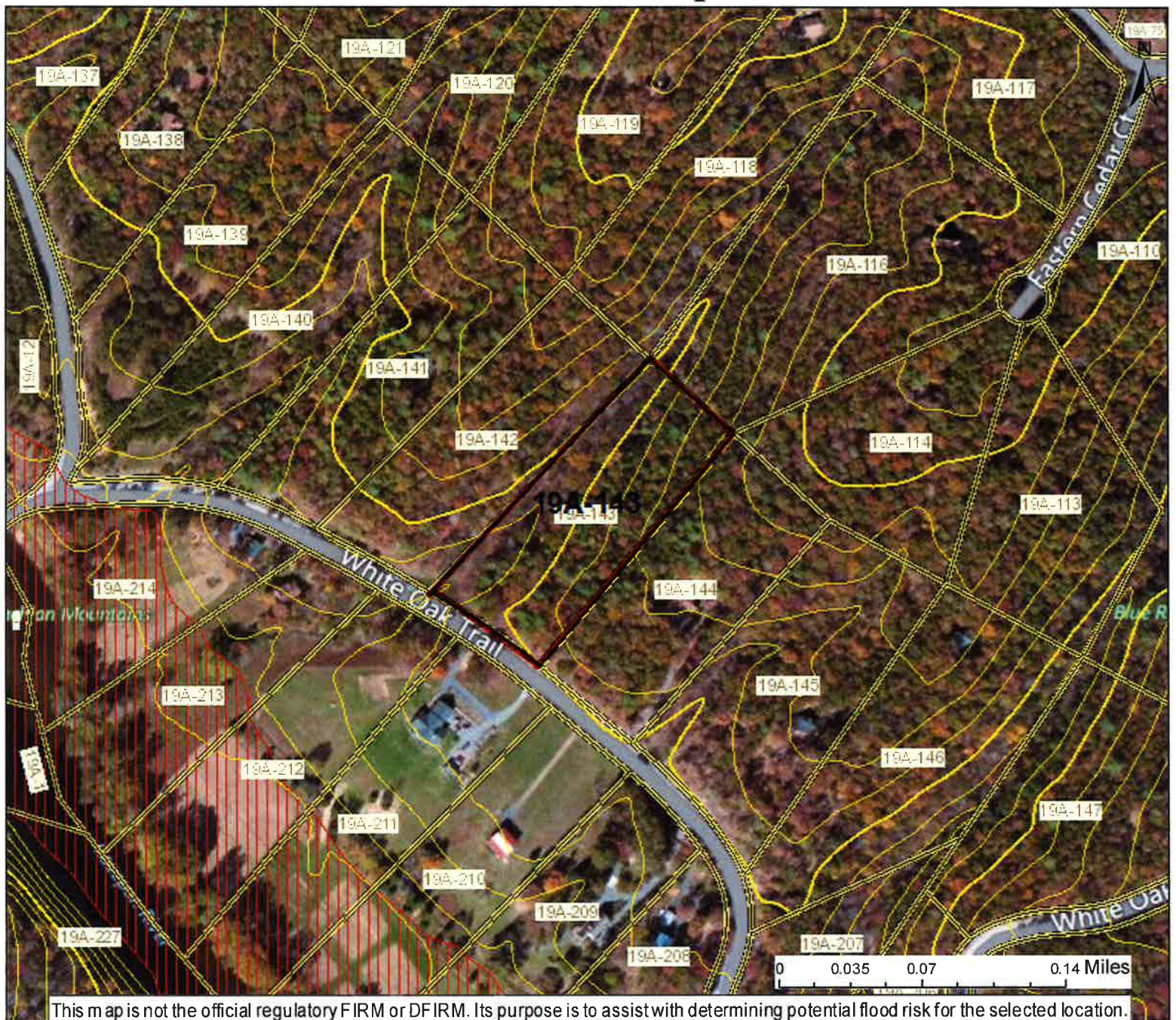
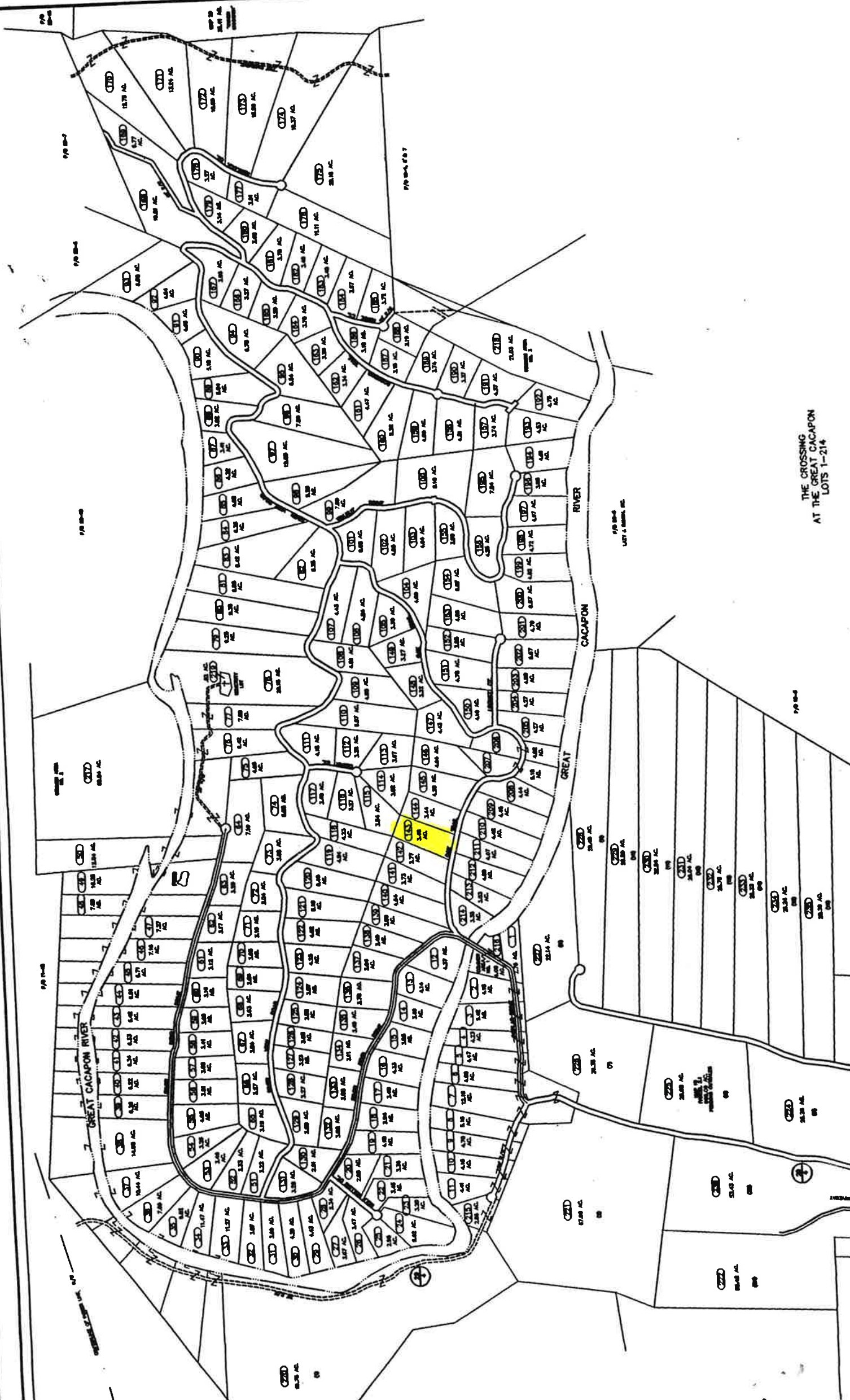


# WV Flood Map



<p> Cross Section (XS) Lines</p> <p> Base Flood Elevation (BFE) Lines</p> <p> Floodway</p> <p><b>Flood Hazard Zone</b></p> <p> Approximate Study (Zone A)</p> <p> Detailed Study (AE, AH, AO)</p> <p> Community Rating System Areas</p> <p><b>Disclaimer:</b> The online map is for use in administering the National Flood Insurance Program. It does not necessarily identify all areas subject to flooding, particularly from local drainage sources of small size. To obtain more detailed information in areas where Base Flood Elevations have been determined, users are encouraged to consult the latest Flood Profile data contained in the official flood insurance study. These studies are available online at <a href="http://www.msc.fema.gov">www.msc.fema.gov</a>. <i>WV Flood Tool (<a href="http://www.MapWV.gov/flood">http://www.MapWV.gov/flood</a>) is supported by FEMA, WV NFIP Office, and WV GIS Technical Center.</i></p>	<p> Location of flood information</p> <p><b>User Notes:</b></p> <p><b>Map created on August 24, 2015</b></p> <p><b>Flood Hazard Area:</b> Flood Hazard Area:</p> <p><b>Flood Hazard Zone:</b></p> <p><b>Stream:</b></p> <p><b>FEMA Issued Flood Map:</b></p> <p><b>Watershed (HUC8):</b></p> <p><b>Advisory Flood Height:</b></p> <p><b>Water Depth:</b> 39.448973</p> <p><b>Elevation:</b></p> <p><b>Location (long, lat):</b> -78.412296</p> <p><b>Location (UTM 17N):</b></p> <p><b>Contacts:</b></p> <p><b>CRS Information:</b></p> <p><b>Flood Profile:</b></p> <p><b>HEC-RAS Model:</b></p> <p><b>Parcel Number:</b></p>
--	--





THE CROSSING  
AT THE GREAT CACAPON  
LOTS 1-214