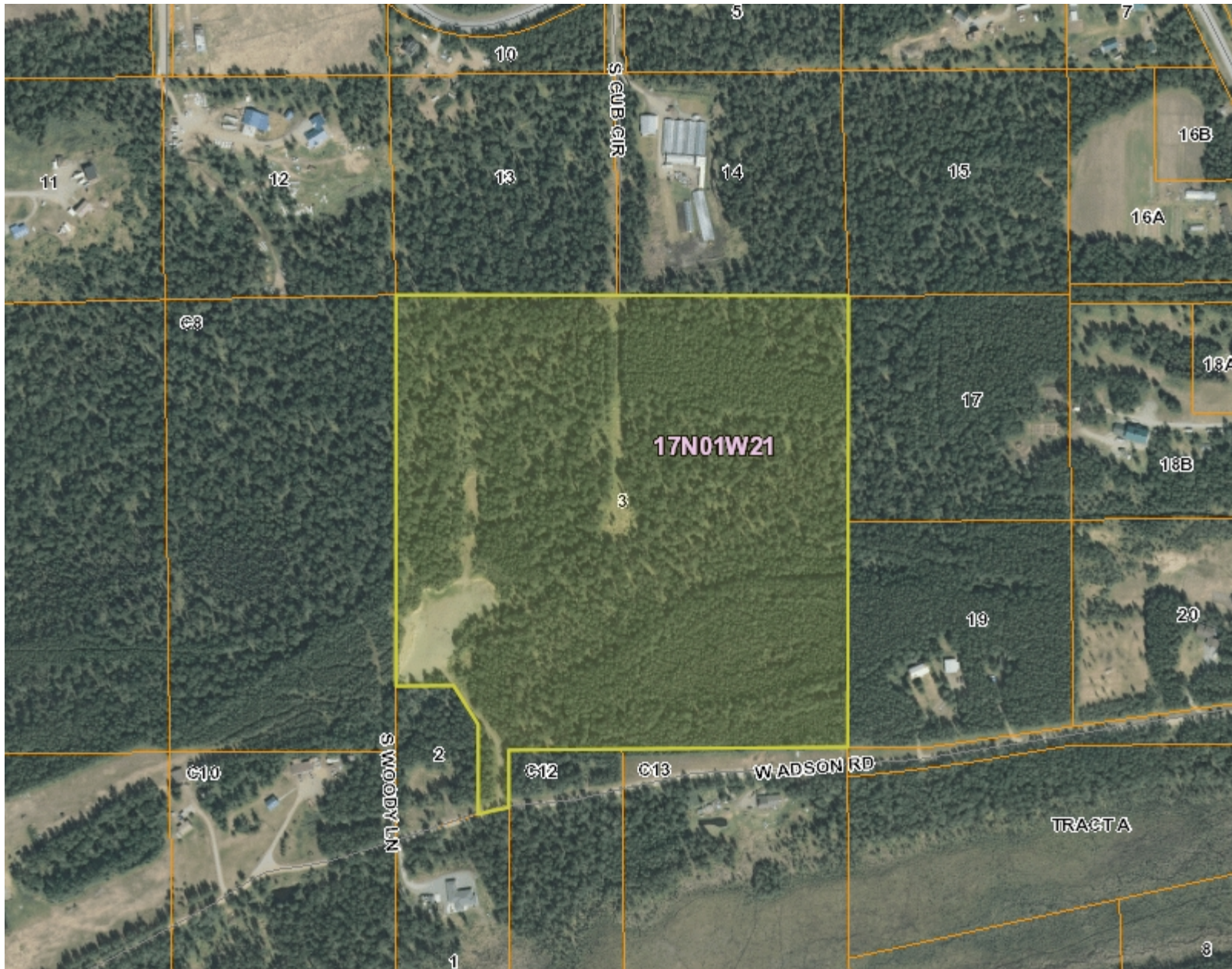




Matanuska-Susitna Borough



Legend

Public Facilities

- Administrative
- Animal Care
- City Hall or Courthouse
- Community or Senior Center
- Correctional Facility
- Landfill or Transfer Station
- Recycling Center
- Transfer Station/Recycling
- Library
- Medical
- Post Office
- Public Safety EMS
- Public Safety Fire
- Public Safety Fire/EMS
- Public Safety Forestry
- Public Safety Law Enforcement
- School

Streets

- Highway
- Major Street
- Medium Street
- Minor Street
- Primitive Road
- Private Road

- Mat-Su Borough Boundary
- Incorporated Cities
- Parcels
- Flood Zone

1: 5,169



0.2 0 0.08 0.16 Miles

NAD_1983_StatePlane_Alaska_4_FIPS_5004_Feet
© Matanuska-Susitna Borough

Reported on 10/16/2016 02:47 PM

THIS MAP IS NOT TO BE USED FOR NAVIGATION

This map is solely for informational purposes only. The Borough makes no express or implied warranties with respect to the character, function, or capabilities of the map or the suitability of the map for any particular purpose beyond those originally intended by the Borough. For information regarding the full disclaimer and policies related to acceptable uses of this map, please contact the Matanuska-Susitna Borough GIS Division at 907-861-7858.

Notes

This map was automatically generated using Geocortex Essentials.