

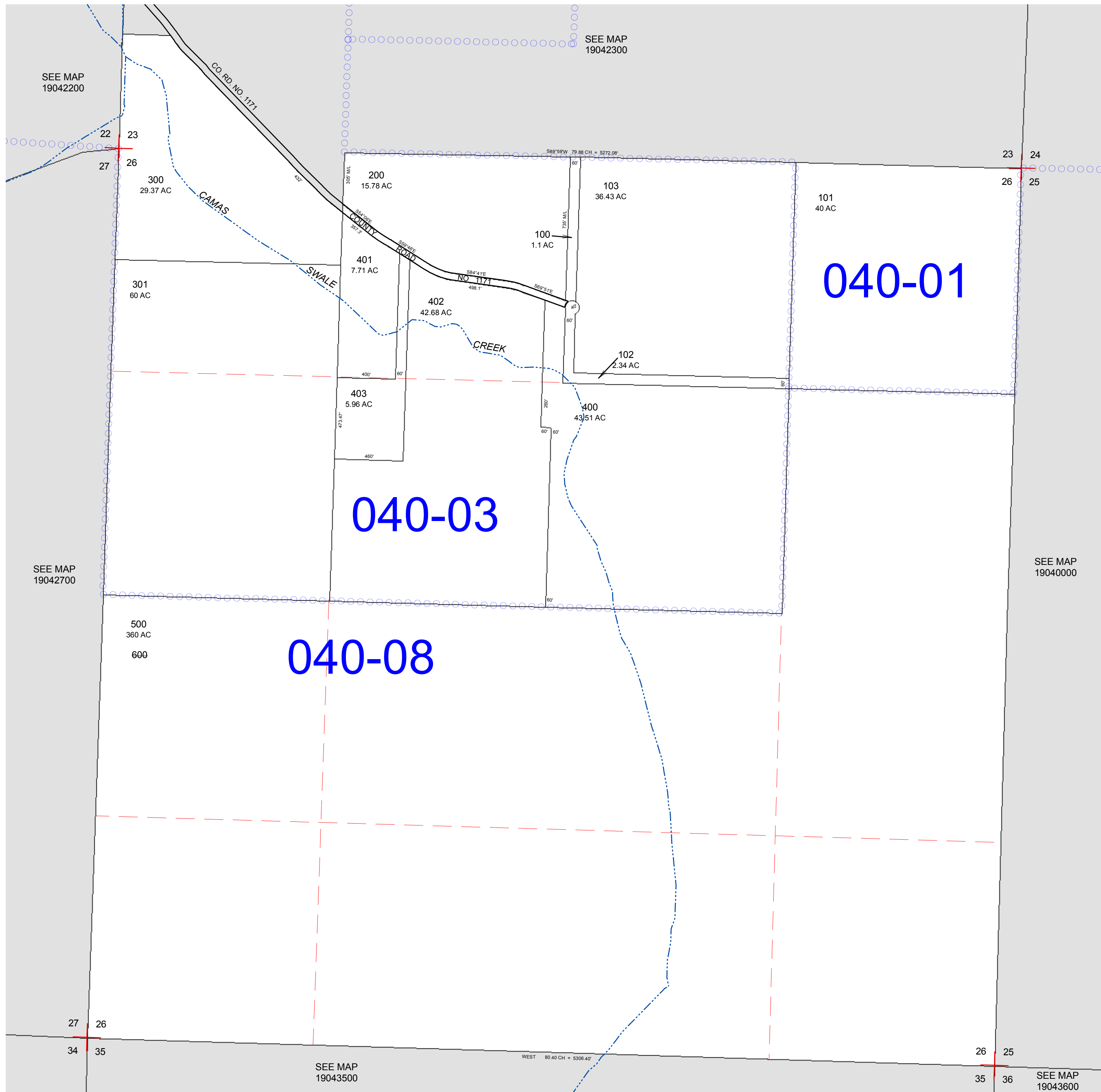
FOR ASSESSMENT AND  
TAXATION ONLY

SECTION 26 T.19S. R.4W. W.M.  
Lane County  
1" = 400'

19042600

GIS DATA  
8/11/2008 3:01:21 PM : lcatbhh

CANCELLED:  
600



REVISIONS:  
8/11/2008 - LCAT142 - CONVERT MAP TO GIS

19042600