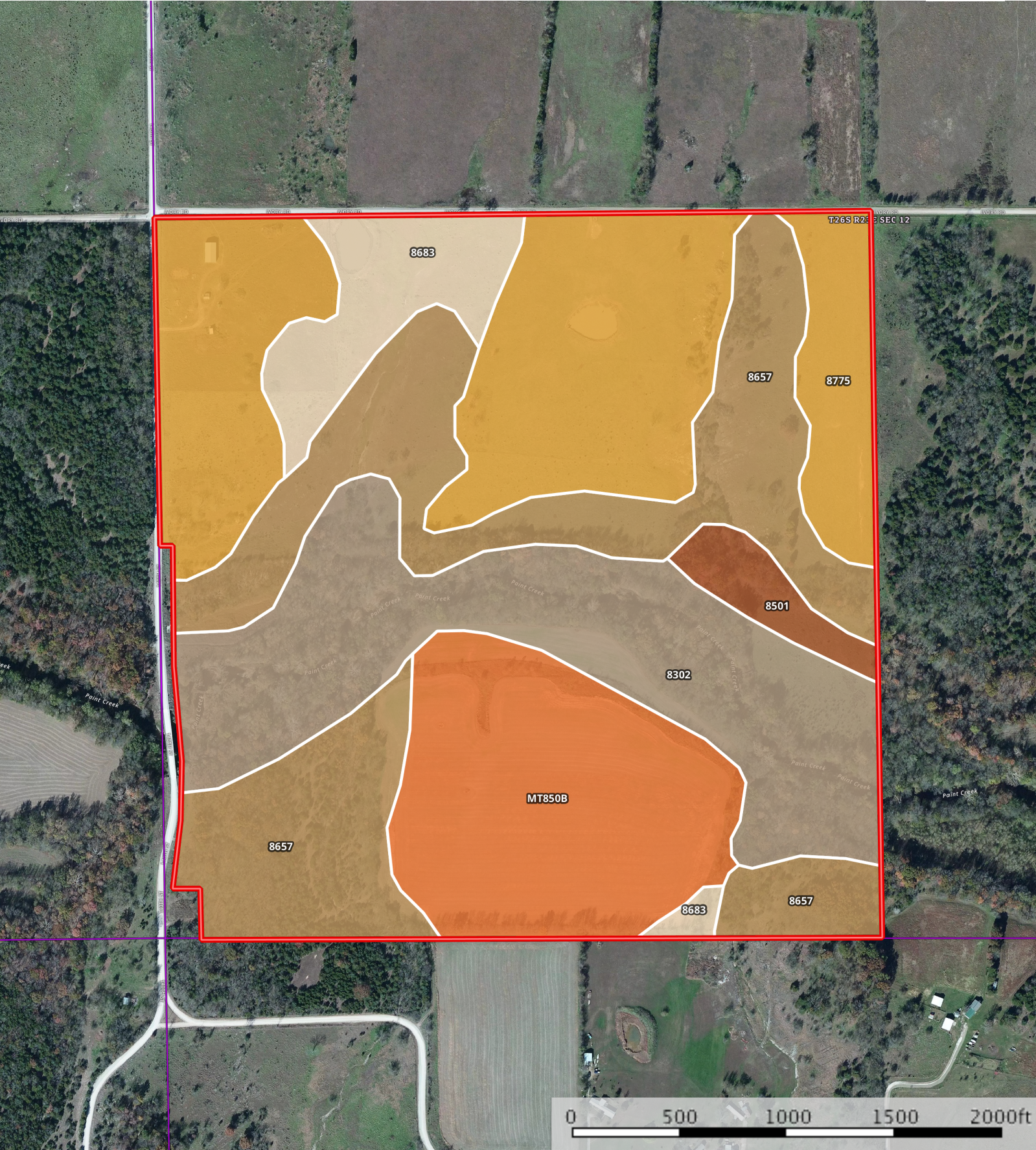



**Bourbon County 160 Soils**  
Bourbon County, Kansas, 160 AC +/-



 Boundary



|  Boundary 161.6 ac

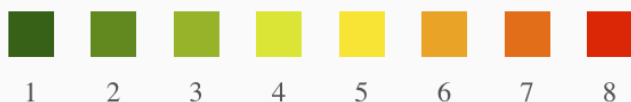
SOIL CODE	SOIL DESCRIPTION	ACRES	%	CAP
8657	Clareson stony silty clay loam, 1 to 3 percent slopes	43.4	26.89	6s
MT850B	Wagstaff silty clay loam, 1 to 3 percent slopes	26.3	16.27	3e
8683	Dennis silt loam, 3 to 7 percent slopes	10.1	6.27	3e
8775	Kenoma silt loam, 1 to 3 percent slopes	43.5	26.9	3e
8501	Mason silt loam, rarely flooded	3.6	2.23	3w
8302	Verdigris silt loam, occasionally flooded	34.7	21.45	2w
TOTALS		161.6	100%	3.59

## Capability Legend

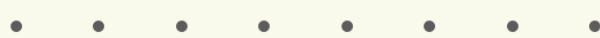
Increased Limitations and Hazards

Decreased Adaptability and Freedom of Choice Users

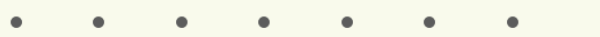
Land, Capability  
Class(non-irrigated)



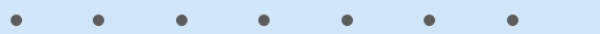
'Wild Life'



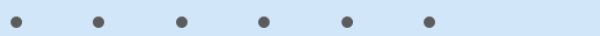
Forestry



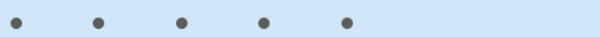
Limited



Moderate



Intense



Limited



Moderate



Intense



Very Intense



## Grazing Cultivation

(c) climatic limitations (e) susceptibility to erosion

(s) soil limitations within the rooting zone (w) excess of water