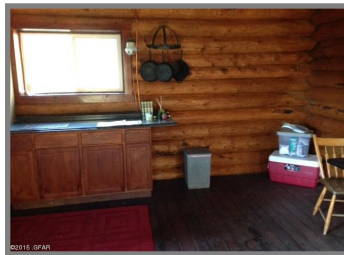




liveinMTrealestate.com



19 acres with Swedish Cope Log Cabin, just 2 miles in

SELLER FINANCING POSSIBLE. Newer Swedish cope log cabin only 2 miles in on 19 acres. Stunning mountain views. professionally surveyed. Metal roof; covered porch. 16 x 24 half loft. Wood burning stove. Ceiling insulated and finished with tongue and groove pine. Kitchen space. This is minutes away from the Missouri River and Holter Lake, both prime fishing destinations. Wildlife will join you on the property, too. Hunt, fish, hike, ride horseback or atv's. Outhouse. No live water. Septic and well are possibilities. Had a spring at base. Insurable access and year-round access. Rough mountain road.



\$84,995



145 Sugarloaf Mountain
Cascade, MT 59421



Live
in Montana
Real Estate

406-770-0013
liveinMTrealestate.com

Lynn Kenyon-Laue, Principal Broker/Realtor®
lynn@lynnkenyon.com 406-770-0013