

Hwy 61 West

Southern
Land Exchange



Kenneth Gibson
Agent

1551 Jennings Mill Road
Suite 1400 A
Watkinsville GA 30677

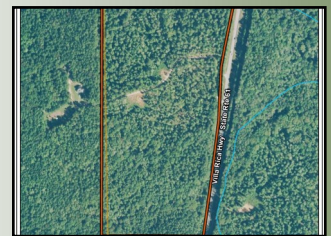
Phone: 706.549.5050
Mobile: (770).324.2648
Fax: 706.549.8909
Email:
kgibson@southernlandexchange.com

Offered for \$5,000 per Acre



57.6 Acres | GA Hwy 61 | Douglas County, GA | 30180

- Mature Timber
- Creek and Hwy Frontage
- Great Location



Located in the northwest corner of Douglas County, 2.5 miles north of Mirror Lake, 4.0 miles north of I-20 in Villa Rica, this well managed tract of land offers hunting/recreational opportunities as well as commercial/residential possibilities. This property has mature, well managed timber stands. If you golf, the Georgian is located 2 miles to the northwest. There is 2,300+/- feet of frontage on Ga. HWY 61 and 1,200 feet of frontage on Sweetwater Creek. All of these features create a unique investment opportunity.

www.SouthernLandExchange.com