

# LAND FOR SALE

## PETERSEN TRUST FARM KEARNEY COUNTY



**Location:** From Minden, 1/2 mile south on State Highway 10. (located on corner of State Highway 10 & K Road)

**Legal**

**Description:** N1/2 N1/2 except 7 acres in N1/2 NE1/4 Section 24-T6N-R15W of the 6th P.M., Kearney County, Nebraska

**Property**

**Description:** Kearney County Assessor indicates a total of 149.25 acres. The farm consists of pivot and gravity irrigated cropland with dry crop and grain storage.

**Taxes:** 2017 Real Estate Taxes - \$7,912.80

**FSA Info:**

Total Cropland - 143.61 acres  
Government Base Acres - Corn 96.9 acres with PLC yield of 183 bu/acre  
Soybean 46.7 acres with PLC yield of 56 bu/acre

**Irrigation**

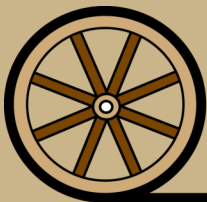
**Information:**

Well Registration G077796  
Completion Date 3/17/1994 at 900 gpm  
Well Depth 255'  
Static Water Level 88'  
Pumping Level 155'  
Column 8"  
Pump - Mid-America  
Gearhead - Amarillo 60 hp  
Power Unit - Chevy 305 natural gas  
Pivot - Valley 8 tower with drop nozzles, equipped with Reinke control panel  
1,000 gallon fuel tank  
In April of 2015, well was equipped with a new 6 inch pump with all work performed by Burgess Well Company. Well is currently set at 400 gpm at 35 psi. Farm is located in the Tri-Basin Natural Resource District and contains 101.44 certified irrigated acres.



**Bart Woodward**  
Listing Agent

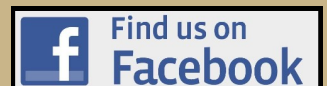
*Offered Exclusively By:*



**AGRI AFFILIATES, INC.**  
*Providing Farm - Ranch Real Estate Services*

KEARNEY OFFICE  
P O Box 1390  
2418 Hwy 30 E  
Kearney, NE 68848-1390  
www.agriaffiliates.com  
**(308) 234-4969**  
Fax (308) 236-9776

Information contained herein was obtained from sources deemed reliable. We have no reason to doubt the accuracy, but the information is not guaranteed. Prospective Buyers should verify all information. All maps provided by Agri Affiliates, Inc. are approximations only, to be used as a general guideline, and not intended as survey accurate. As with any agricultural land, this property may include noxious weeds. Agri Affiliates, Inc. and all agents are acting as Agent of the Seller.



**NRD Info:** Farm is located in the Tri-Basin Natural Resource District, and contains 101.44 certified irrigated acres.

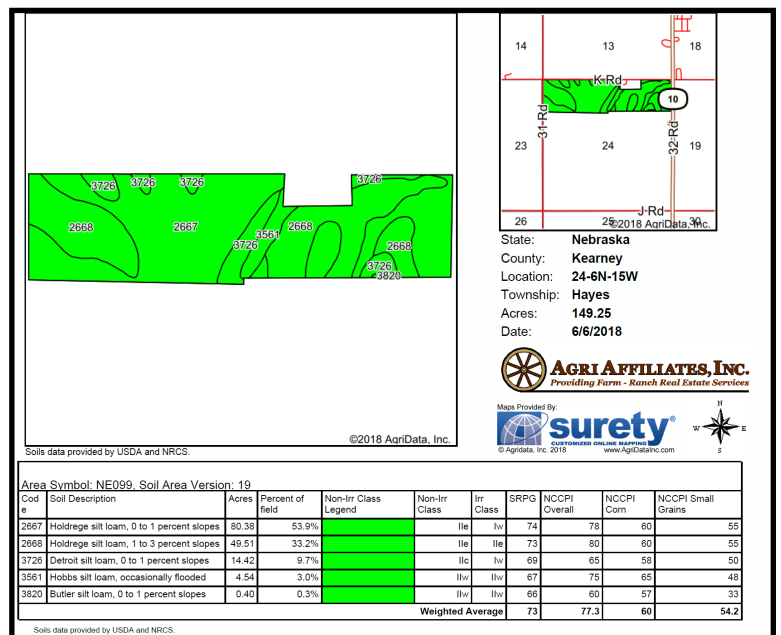
**Soils:** Soils consist of very productive Class I and II Holdrege, Detroit, and Hobbs silt loams, with slopes of 0-3%.

**Building Improvements:** Two metal grain storage bins having an estimated capacity of 7,000 bushels each.

**List Price:** \$820,000.00

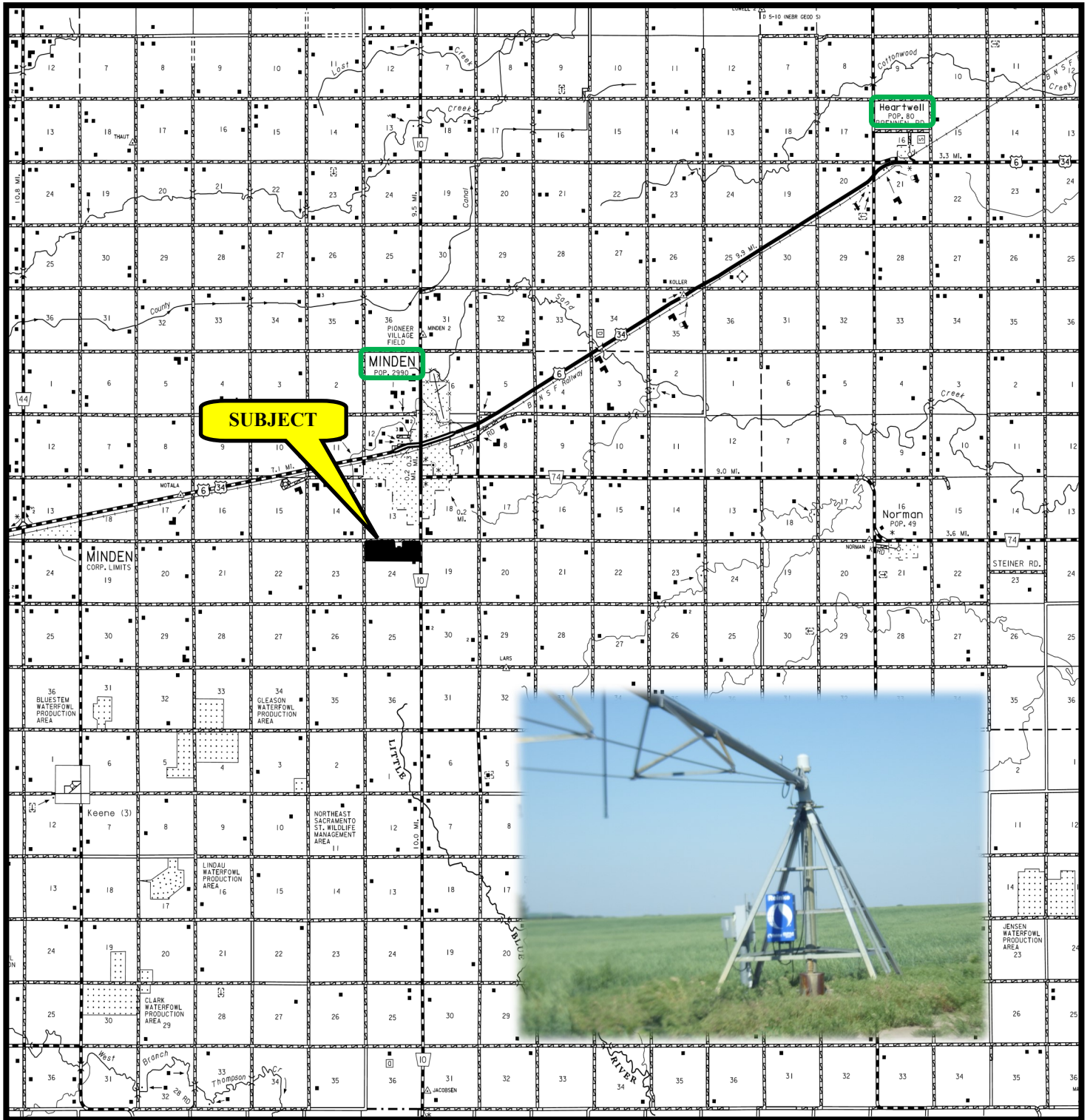
**Comments:** This is a well maintained, productive farm, located close to the community of Minden.

**Contact:** Bart Woodward; Listing Agent 308-233-4605 or bart@agriaffiliates.com  
Agri Affiliates—Providing Farm, Ranch Real Estate Services





# PETERSEN TRUST FARM KEARNEY COUNTY LOCATION MAP



**AGRI AFFILIATES, INC.**  
Providing Farm - Ranch Real Estate Services