

DRE# 01421338
Each Office is
Independently Owned &
Operated

The Stich Ranch

Listing# NS18135820- Ranchita Ave, San Miguel

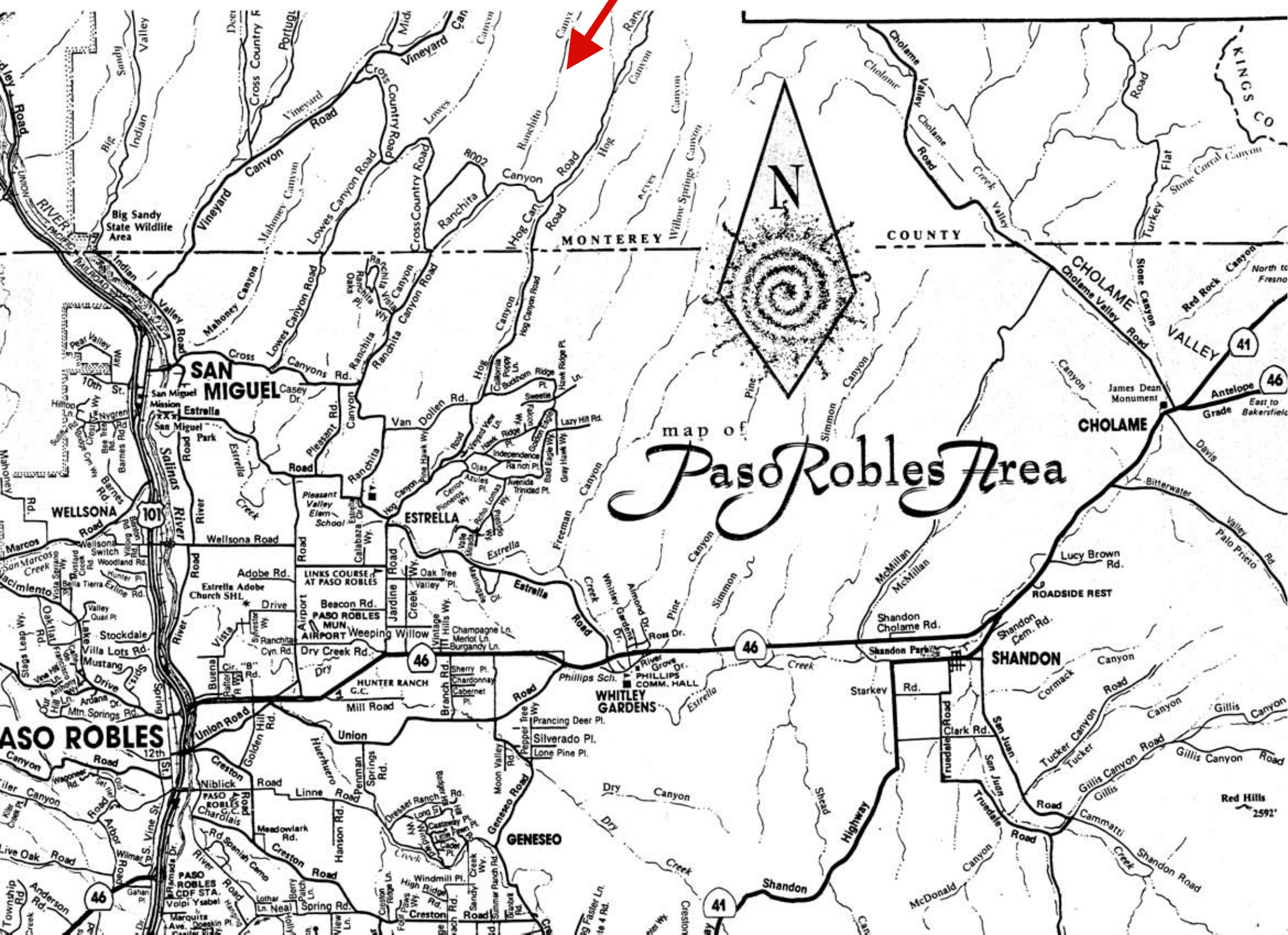


One of the most beautiful ranches in Southern Monterey County, the Stich Ranch is app. 1,371 acres of oak and pine studded property with a mix of terrain from level to gently rolling to steep.

Once part of the historic Stewart Ranch, the property has been used for grazing and grain production in the past. The app. 1500 square foot 3 bedroom 1 bath residence was built in the early 1900's and has had a number remodels up to recent times. There are two wells on the property and numerous outbuildings including a small one bedroom 1 bath guest house.

Located app. 17 miles north east of Paso Robles the property is at elevations from appx. 1400 to over 2400 feet above sea level. Stunning views of both Monterey and San Luis Obispo Counties can be had from the higher country with it's oak and pine groves, deep canyons and level open plateaus. Under Williamson Act Ag Preserve status, the property currently has property taxes of only appx. \$2,000 per year. A land use law firm has also identified 14 separate parcels in the ranch for possible certificates of compliance with Monterey County.

If your criteria for a ranch purchase includes having beautiful tree studded rolling terrain with fantastic 360 degrees and any of the other above features, this could be an excellent choice. Priced at app. \$2,735 per acre. \$3,750,000



MONTEREY

COUNTY

KINGS CO

SAN MIGUEL

ESTRELLA

CHOLAME

SHANDON

GENESEO

map of
Paso Robles Area

PASO ROBLES

LINKS COURSE AT PASO ROBLES

WHITLEY GARDENS

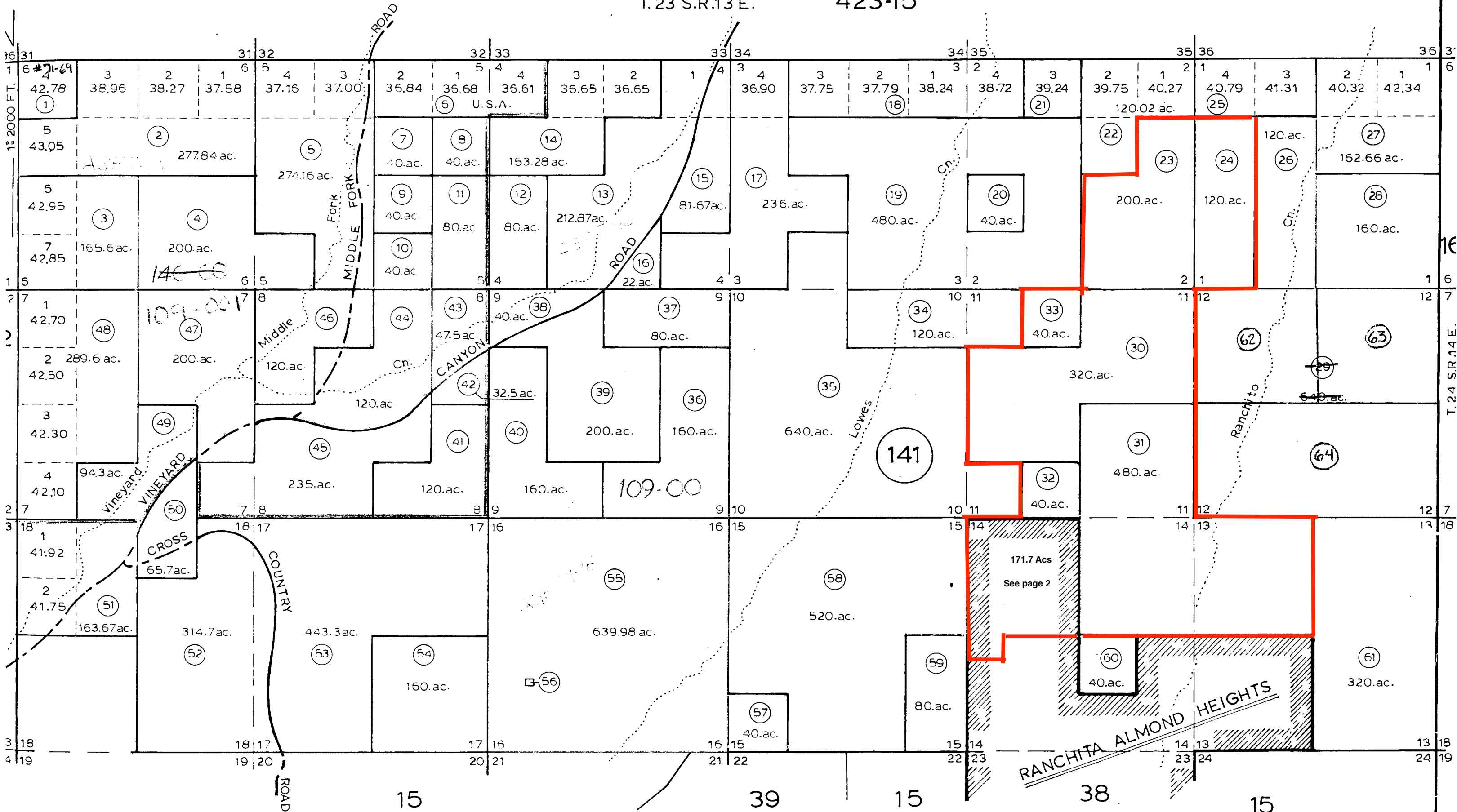
PASO ROBLES CDF STA.

McDonald

Red Hills
2592'

T.23 S.R.13 E.

423-15



1 in. = 1000 ft.

THIS MAP IS INTENDED TO BE USED FOR
PROPERTY TAX ASSESSMENT PURPOSES ONLY

T. 24 S. R. 13 E.
RANCHITA ALMOND HEIGHTS
VOL. 12 O.L. PG 18 1/2 RECORDED 4-1-20

15

